



2023 TVET STATISTICS ANNUAL REPORT



Technical Education and Skills
Development Authority (TESDA)
www.tesda.gov.ph | 8887-7777

TABLE OF CONTENTS

TRAINING OUTPUT

1	Table 1. Number of Enrolled and Graduates by Region and Sex
2-7	Table 2. Number of Enrolled and Graduates by Region, Province and Sex
8	Table 3. Number of Assessed and Certified by Region and Sex
9-14	Table 4. Number of Assessed and Certified by Region, Province and Sex
15	Table 5. Number of Enrolled and Graduates by Delivery Mode and Sex
16	Table 6. Number of Enrolled by Region and Delivery Mode
17	Table 7. Number of Graduates by Region and Delivery Mode
18-19	Table 8. Number of Enrolled and Graduates by Sector and Sex
20-21	Table 9. Number of Assessed and Certified by Sector and Sex
22	Table 10. Number of Enrolled and Graduates by Type of Provider, by Region and Sex
23-32	Table 11. Number of Enrolled and Graduates by TTI, by Region and Sex
33-42	Table 12. Number of Assessed and Certified by TTI, by Region and Sex
43-44	Table 13. Number of Enrolled, Graduates, Assessed, Certified by Client Type and Sex

TABLE OF CONTENTS

SCHOLARSHIP PROGRAMS OUTPUT

45

Table 14. Number of Enrolled, Graduates, Assessed and Certified by TVET Scholarship Program, by Sex (Continuing Appropriations 2022)

46

Table 15. Number of Enrolled, Graduates, Assessed and Certified by TVET Scholarship Program, by Sex

47

Table 16. Number of Enrolled, Graduates, Assessed and Certified by TVET Scholarship Program, by Region (Continuing Appropriations 2022)

48-49

Table 17. Number of Enrolled, Graduates, Assessed and Certified by TVET Scholarship Program, by Region

50

Table 18. Number of Enrolled, Graduates, Assessed and Certified by TVET Scholarship Program, by Sector (Continuing Appropriations 2022)

51-52

Table 19. Number of Enrolled, Graduates, Assessed and Certified by TVET Scholarship Program, by Sector

ASSESSMENT AND CERTIFICATION

53

Table 20. Number of Accredited Assessment Centers and Competency Assessors by Region

53

Table 21. Number of Competency Assessors (Warm Body) by Region

54

Table 22. Number of Assessment Centers and Competency Assessors by Sector

TABLE OF CONTENTS

PROGRAM REGISTRATION

55	Table 23. Number of Registered Programs and TVET Provider by Region
56-60	Table 24 . Number of Registered Programs and TVET Provider by Region and Province
61	Table 25. Number of Registered Programs and TVET Provider by Sector
62	Table 26. Number of TVET Provider by Type of Provider and Region
63-67	Table 27. Number of TVET Provider by Type of Provider, Region and Province
68	Table 28. Number of Private TVET Provider by Classification and Region
69	Table 29. Number of Public TVET Provider by Classification and Region
70	Table 30. Number of NTTC Holders by Region
71-75	Table 31. Number of NTTC Holders by Region and Province
76	Table 32. Number of NTTC Holders by Sector

TRAINERS DEVELOPMENT PROGRAM

77	Table 33. Number of TVET Output for Trainer's Methodology by Region and Sex
----	---

TABLE OF CONTENTS

78-82 **Table 34.** Number of Enrolled and Graduates for Trainers
Methodology by Region, Province and Sex

83 **Table 35.** National Trainers Development Program Output

TRAINING REGULATIONS AND COMPETENCY STANDARDS DEVELOPMENT

84 **Table 36.** Number of Promulgated Training Regulations (TRs) by
Sector

85 **Table 37.** List of Developed Competency Standards (CS)

86 **Table 38.** List of Developed Training Regulations (TRs)

87 **Table 39.** List of Reviewed Training Regulations (TRs)

PARTNERSHIPS AND LINKAGES

88-89 **Table 40.** Number of Partnership Forged by Region, by Sector

90 **Table 41.** Number of Partnership Forged by Sector

91 **Table 42.** Number of Enterprise-based Training Implementers

92-93 **Table 43.** Number of Partnership Forged by Region by
Classification of Partner

94 **Table 44.** Number of Partnership Forged by Region by Delivery
Mode



TABLE OF CONTENTS

ANNEXES

A: **SECTORAL DATA**

- Agriculture, Forestry and Fisheries
- Automotive and Land Transportation
- Chemicals/Plastics/Petrochemicals
- Construction
- Creative
- Decorative Crafts
- Electrical and Electronics
- Footwear and Leathergoods
- Furnitures and Fixtures
- Garments
- Heating, Ventilation, Airconditioning, And Refrigeration (HVACR)
- Human Health/Health Care
- Information and Communication Technology
- Logistics
- Maritime
- Metals and Engineering
- Process Food and Beverages
- Pyrotechnics
- Social, Community Development and Other Services
- Tourism (Hotel and Restaurant)
- TVET (Education)
- Utilities (Water Supply, Sewerage, Waste Management, Etc)
- Visual Arts
- Wholesale and Retail Trading
- Others

B: **PROMULGATED TRS**

- List of Promulgated Training Regulations (TRs)

HIGHLIGHTS

TRAINING OUTPUT

- In the year 2023, the national completion rate was 87.47%. This is based on a recorded enrollment of 1,633,393 and 1,428,724 graduates.
- Compared to the 2022 output, the total number of enrollees and graduates has increased by 29.61% and 16.04% respectively.
- There is a significant variation in both completion rates and enrollment numbers between different regions. NCR has the highest number of enrollees, accounting for 11.28% of the national total, followed by Region III (10.19%), and Region VII (7.40%). Region IV-B has the highest completion rate with 95.20%, followed by Region II (94.88%) and CAR (94.65%).
- Similarly, NCR takes the highest share (11.55%) of the total number of graduates, followed by Region III (10.17%), and Region VII (6.70%).
- Overall, there were more female enrollees (851,031) than males (782,362). Interestingly, the completion rate for females (88.32%) was slightly higher than for males (86.55%).
- In terms of accomplishment rate on the number of enrolled and graduates against the regional targets, Region VIII achieved the highest accomplishment rate for enrolled at 118.28%. Similarly, CAR achieved the highest accomplishment rate for graduates at 110.40%.
- The top 3 sectors with highest percentage share in terms of enrolled and graduates are Tourism (Hotel and Restaurant (E-17.64%, G-16.56%), Agriculture, Forestry and Fishery (E-15.67%, G-17.10%), and Social, Community Development and Other Services (E-9.64%, G-9.68%), while Visual Arts and Furniture and Fixtures obtained the lowest training output.

HIGHLIGHTS

- The public TVET providers accounted for more than half of the overall number of enrolled (53.73%) and graduates (54.60%).
- Regarding the TESDA Technology Institutions (TIs), there were a total of 462,459 enrolled and 411,134 graduates, representing 52% of the total enrolled and graduates of the public TVET providers.
- TIs in Region VII have the highest number and share of enrolled (44,030; 9.52%) and graduates (33,299; 8.10%).
- As of December 2023, the total number of scholarship beneficiaries from the continuing appropriation program was 11,020 enrollees, with a completion rate of 78.49% (or 8,650 graduates). For the current appropriation, the total number of enrollees is 467,980 with a completion rate of 77.08% (or 360,717 graduates).
- Agriculture, Forestry, and Fishery, Tourism (Hotel and Restaurant), and Metals and Engineering have the most number of enrollees and graduates based on the scholarship program outputs for 2023 current appropriation.
- For the Training Delivery Mode, the Institution-based training (IBT) has the highest percentage share in terms of enrollees with 39.02%, followed closely by community-based training (CBT) at 38.6%. Monitored programs (15.11%) and enterprise-based training (EBT) (7.20%). While in terms of completion rate per Training Delivery Mode, EBT has the highest completion rate of 94.72%, followed by CBT at 90.79%. IBT has a completion rate of 84.25%, while monitored programs come in at 83.83%.
- Similar last 2022, the TVET client type with the highest number of enrollees and graduates are students (484,438 Enrolled | 384,087 Graduates), farmers and fishermen (360,149 Enrolled | 336,983 Graduates), and Indigenous People & Cultural Communities (153,014 Enrolled | 142,532 Graduates)

HIGHLIGHTS

ASSESSMENT AND CERTIFICATION

- A total of 1,043,601 individuals have been assessed, with 973,563 being certified, resulting in a certification rate of 93.3%. Both the number of assessed and certified individuals have seen a 15% increase from the previous year.
- In terms of certification rates among regions, TESDA Region VIII boasts the highest rate at 96.3%, followed closely by TESDA NCR at 96.2% and TESDA Region VII at 95%. However, when considering the accomplishment rate based on the target number of assessments and certifications compared to the actual output, TESDA NCR has exceeded their targets by approximately 130% for both assessed and certified individuals, whereas TESDA Region IX has achieved the lowest accomplishment rate at 39%.
- The sectors with the highest number of certified individuals for the year 2023 are Tourism (Hotel and Restaurant) at 27.37%, Social, Community Development, and Other Services at 12.54%, Electrical and Electronics at 10.92%, Automotive and Land Transportation at 10.18%, and Agriculture, Forestry, and Fishery at 9.87%. Among these sectors, Tourism (Hotel and Restaurant), Electrical and Electronics, and Automotive and Land Transportation (under Manufacturing) are sectors that included in the priority sectors identified in the National Technical Education and Skills Development Plan (NTESDP) (2023-2028)
- The Creative, Logistics and Education (TVET) sector has the lowest percentage output in terms of certification provided that these sectors are included in the priority sectors.
- In terms of certification rate, Agriculture, Forestry, and Fishery have the highest certification rate at 96.50%, followed closely by Automotive and Land Transportation at 95.03%, and Tourism (Hotel and Restaurant) at 94.99%.

HIGHLIGHTS

- In terms of scholarship assessments and certifications for the continuing appropriation (2022 fund source), there were a total of 4,783 assessments, out of which 93.62% or 4,478 were certified. For the current appropriation, there were a total of 150,379 assessments, with 95.30% or 143,314 being certified.
- Regarding sectoral distribution based on scholarship assessments and certified output, Tourism (Hotel and Restaurant) accounted for a 24.52% share in terms of assessments with a certification rate of 96.45%. This was closely followed by Agriculture, Forestry, and Fishery with a 19.67% share of assessments and a certification rate of 97.76%. Additionally, Metals and Engineering accounted for 13.35% of assessments with a certification rate of 96.73%.
- As for TVET Clients, student obtained the highest certification rate at 94.17%, followed by Farmers and Fishermen with 95.82% and Displaced Workers with 96.19%

PROGRAM REGISTRATION & TVET PROVIDERS; ASSESSMENT CENTERS & ASSESSORS; GENDER-BASED; TRAINERS; & PARTNERSHIPS AND LINKAGES

PROGRAM REGISTRATION

- As of December 2023, there are a total of 17,629 registered programs and 4,536 TVET providers, indicating a decrease of 1.45% in registered programs and 2.05% in TVET providers compared to the previous year. One possible reason for this decline could be the closure of some Technical Vocational Institutions and the expiration of program validity.

HIGHLIGHTS

- In relation to registered programs and TVET providers, the regions with the highest number of registered programs and TVET providers are from the large regions, namely NCR (9.26% of registered programs, 11.71% of TVET providers), Region III (11.07% of registered programs, 10.82% of TVET providers), and Region IV-A (9.47% of registered programs, 11.95% of TVET providers).
- As for the sectoral distribution, the Tourism (Hotel and Restaurant), Agriculture, Forestry, and Fishery, and Metals and Engineering sectors have the highest number of registered programs and TVET providers. In result, these sectors also have the highest number of enrolled and certified individuals. For other sectors like the Creative and Logistics sectors, which have a lower number of registered programs and TVET providers, this also contributes to their lower enrollment and certification results.
- In terms of the distribution of TVET providers between public and private sectors, the private sector comprises a total of 90.43%, with 4,102 private TVET providers, while the public sector accounts for only 9.57%, with a total of 434 public TVET providers. Among the public TVET providers, 178 are TESDA Technology Institutions, representing only 41.01% of the total public TVET providers.

COMPETENCY ASSESSORS AND ASSESSMENT CENTERS

- As of December 2023, there are a total of 14,452 competency assessors and 9,081 assessment centers nationwide, marking a 6.78% and 11.64% increase, respectively, from the previous year.
- Consistently, the top three regions with the most number of assessment centers and competency assessors are NCR (1,125 AC | 1,677 Assessors), IV-A (1,005 AC | 1,425 Assessors), and III (1,055 AC | 1,326 Assessors).

HIGHLIGHTS

- In terms of sectors, Tourism (Hotel and Restaurant) (2,406 AC | 3,534 Assessors), Construction (1,269 AC | 1,919 Assessors), and Agriculture, Forestry, and Fishery (874 AC | 1,630 Assessors) have recorded the highest numbers of assessment centers and competency assessors.
- Similar to the data from the previous year, Bread and Pastry Production NC II (488), Shielded Metal Arc Welding (SMAW) NC II (409), and Food and Beverage Services NC II (407) have the highest number of assessment centers among all qualifications. This indicates that qualifications within the tourism sector have a larger infrastructure capacity, enabling them to accommodate a greater number of individuals seeking assessment.
- Additionally, the majority of competency assessors are from the following programs: Driving NC II with 758 assessors, followed by Bread and Pastry Production NC II with 727 assessors, and Cookery NC II with 705 assessors.

TRAINERS

- As of December 2023, there are a total of 52,292 active National TVET Trainer Certificates (NTTC), reflecting a 36.40% increase from the previous year. However, in terms of individual trainers (warm bodies), there are a total of 24,796 NTTC holders.
- In terms of regional distribution, NCR still leads with the highest number of NTTC holders, comprising 14.86% of the total or 7,772 NTTC Holders. Region VI follows closely with 12.44% or 6,507 NTTC holders, while Region III ranks third with 8.90% or a total of 4,654 NTTC holders.
- The Tourism (Hotel and Restaurant) sector continues to lead in the number of NTTC Holders, indicating its significance compared to other sectors. It boasts a total of 13,465 NTTC Holders. Following closely are the Agriculture, Forestry, and Fisheries sector with 8,059 NTTC Holders, and the Electrical and Electronics sector with 5,872 NTTC Holders.

HIGHLIGHTS

- In CY 2023, Trainers Methodology Level I enrolled a total of 6,686 individuals, achieving a completion rate of 79.29%. Among them, 5,566 were assessed, leading to a certification rate of 72.24%, resulting in 4,021 certified individuals.
- Similarly, Trainers Methodology Level II had 682 enrollments with an impressive completion rate of 88.56%. Of these, 195 were assessed, with a certification rate of 68.72%, resulting in 134 certified individuals.
- As of December 2023, a total of 277 trainers are enrolled in various trainers development programs, with 242 graduates completing their training. Below is the list of trainers development programs:
 - Training of Trainers on Start and Improve Your Business (SIYB) Business Game
 - Writing Workshop on Work Readiness Modules on 21st Century Skills for NCs III & IV
 - COC 1: Conduct Training Needs Analysis Leading to TM Level II
 - COC 2: Develop Training Curriculum Leading to TM Level II
 - COC 3: Develop Learning Materials Leading to TM Level II
 - COC 4: Develop Competency Assessment Tools Leading to TM Level II
 - COC 5: Design and Develop Maintenance System leading to TM Level II
 - COC 6: Develop eLearning Materials leading to TM Level II
 - COC 7: Facilitate Development of Competency Standards Leading to TM Level II
 - Regional Lead Trainers Development Program on Quality Cost Delivery
 - Trainers' Training on the Operation, Servicing and Maintenance of C02 System in Industrial Refrigeration
 - Training cum Production on Developing STEMified Competency-Based Curriculum (CBC)

GENDER- BASED OUTPUT

- The total number of female enrollees is slightly higher compared to males, with females comprising approximately 4.20% more of the total enrollment (68,669) compared to males. Similarly, among graduates, females also outnumber males by approximately 5.21% (74,460).

HIGHLIGHTS

- In terms of sector, a significant disparity is observed in the enrollment between females (195,672 or 67.92%) and males (952,431 or 32.08%) in the Tourism sector. Similarly, the Human Health/Health Care sector shows a higher enrollment of females, with 60,905 enrollees, accounting for 71.75%, compared to male enrollees at 28.25% or 23,981.
- One possible explanation for this trend is that women's skills are often more suited and dominant in sectors such as tourism and health care, which involve roles like housekeeping, front office services, food and beverage handling, cooking, personal care aides, home health aides, and nursing assistants.
- Conversely, male enrollment still dominates in sectors that require physical strength, such as Construction, where female enrollment stands at 10,374 or 15.31%, while male enrollment is significantly higher at 57,369 or 84.69%. Similarly, in the Automotive and Land Transportation sector, female enrollment is 31,644 or 24.40%, whereas male enrollment comprises 98,045 or 75.60%.
- In Trainers Methodology Level I, there is a slightly higher enrollment of females (55.01%) compared to males (44.99%). Conversely, in Trainers Methodology Level II, males have a slightly higher enrollment than females, with a marginal difference of 3%.

TRAINING REGULATIONS AND COMPETENCY STANDARDS

- As of December 2023, a total of 322 Training Regulations (TRs) have been promulgated. The Construction sector maintains the highest number of Training Regulations, with 43 regulations, followed by Automotive and

HIGHLIGHTS

Land Transportation with 40, Agriculture, Forestry, and Fishery with 38, and Metals and Engineering with 34.

- From January to December 2023, there were a total of eleven (11) newly developed TRs, with six (6) of them already promulgated. These TRs cover sectors such as Social, Community Development and Other Services, Creative, and Information and Communication Technology.
- There are also nineteen (19) newly developed Competency Standards (CS), with eight (8) of them originating from the Area-Based and Demand-Driven (ABDD) TVET approach, and three as Micro-CS. These Competency Standards span across various sectors, including Agriculture, Forestry, and Fishery; Automotive and Land Transportation; Heating, Ventilation, Air Conditioning, and Refrigeration; Human Health/Health Care; Information and Communication Technology; Language; Social, Community Development, and Other Services; Tourism (Hotel and Restaurant); TVET (Education); and Utilities.
- Eleven (11) Training Regulations (TRs) have undergone review, with seven (7) of them already promulgated. These reviewed TRs span sectors such as Footwear & Leathergoods, Electrical & Electronics, Tourism (Hotel and Restaurant), Information and Communication Technology, and Garments.

PARTNERSHIPS AND LINKAGES

- As of December 2023, a total of 837 partnerships have been established across various regions and sectors. Region II has recorded the highest number of partnerships forged, totaling to 175, followed by Region VII with 130 and Region IV-A with 67.



HIGHLIGHTS

- In terms of sectors, Tourism (Hotel and Restaurant) maintains the highest number of partnerships forged, totaling 129, followed by the Construction Sector with 109, and Automotive and Land Transportation with 102.
- Regarding the classification of partners, the majority are from Micro, Small, and Medium Enterprises (MSMEs), totaling 451. Private Companies (including only large companies or those employing 200 employees and above, as per the DTI definition) follow with a total of 127 partnerships, and individuals account for 86 partnerships.

NATIONAL OUTPUT



ENROLLED

1,633,393



GRADUATED

1,428,724



ASSESSED

1,043,601



CERTIFIED

973,563

REGULATORY PROGRAMS

7,699

COMPETENCY
ASSESSOR

1,937

ASSESSMENT
CENTER

17,629

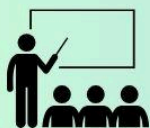
REGISTERED
PROGRAMS

4,536

TVET PROVIDER

Note: Competency Assessors are counted by warm body, and both assessment center and TVET provider are counted by institutions (Individual address).

TESDA GRADUATES BY TRAINING DELIVERY MODE



INSTITUTION-
BASED TRAININGS

537,016



ENTERPRISED-
BASED TRAININGS

111,378



COMMUNITY-
BASED TRAININGS

573,445

PARTNERSHIP AND LINKAGES



837
TOTAL PARTNERSHIP
FORGED

SCHOLARSHIP PROGRAMS BENEFICIARIES

TRAINING FOR WORK SCHOLARSHIP
PROGRAM (TWSP)

174,596

PRIVATE EDUCATION STUDENT
FINANCIAL ASSISTANCE (PESFA)

9,335

SPECIAL TRAINING FOR
EMPLOYMENT PROGRAM (STEP)

108,161

UNIVERSAL ACCESS TO QUALITY
TERTIARY EDUCATION ACT (UAQTEA)

59,466

TULONG TRABAHO SCHOLARSHIP
PROGRAM (TTSP)

45,092

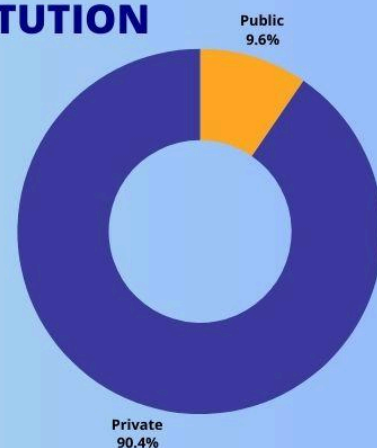
TVET PROVIDER BY TYPE OF INSTITUTION

4,102

PRIVATE

434

PUBLIC



TOP 3 SECTORS WITH MOST NUMBER OF GRADUATES



AGRICULTURE,
FORESTRY AND FISHERY



TOURISM (HOTEL AND
RESTAURANT)



SOCIAL, COMMUNITY
DEVELOPMENT AND
OTHER SERVICES

Table 1. Number of Enrolled and Graduates by Region and Sex: CY 2023

Region	Enrolled					Graduates					Completion Rate
	Target	Output		Total	(%)	Target	Output		Total	(%)	
		Female	Male		Accomp		Female	Male		Accomp	
NCR	227,568	107,733	76,482	184,215	80.95%	208,206	100,323	64,632	164,955	79.23%	89.54%
CAR	57,241	34,804	30,527	65,331	114.13%	56,008	33,300	28,535	61,835	110.40%	94.65%
I	127,156	49,725	55,197	104,922	82.51%	120,112	35,961	41,127	77,088	64.18%	73.47%
II	88,038	48,317	51,166	99,483	113.00%	85,687	46,246	48,141	94,387	110.15%	94.88%
III	174,963	89,174	77,312	166,486	95.15%	162,893	77,785	67,453	145,238	89.16%	87.24%
IV-A	173,644	45,479	46,544	92,023	53.00%	165,108	40,736	38,918	79,654	48.24%	86.56%
IV-B	65,387	27,362	28,489	55,851	85.42%	63,954	26,071	27,098	53,169	83.14%	95.20%
V	80,289	41,129	36,573	77,702	96.78%	71,246	37,303	32,497	69,800	97.97%	89.83%
VI	105,440	28,648	32,330	60,978	57.83%	103,450	27,170	28,266	55,436	53.59%	90.91%
VII	136,840	66,692	54,139	120,831	88.30%	127,727	53,538	42,221	95,759	74.97%	79.25%
VIII	97,836	61,631	54,088	115,719	118.28%	95,047	48,150	44,547	92,697	97.53%	80.11%
IX	90,228	54,974	38,743	93,717	103.87%	86,220	49,976	34,789	84,765	98.31%	90.45%
X	103,567	48,844	42,556	91,400	88.25%	96,395	45,751	39,291	85,042	88.22%	93.04%
XI	106,281	56,425	52,157	108,582	102.17%	98,619	45,952	43,635	89,587	90.84%	82.51%
XII	107,513	40,203	57,291	97,494	90.68%	103,072	35,806	50,631	86,437	83.86%	88.66%
CARAGA	76,384	41,861	37,470	79,331	103.86%	72,143	39,523	34,009	73,532	101.93%	92.69%
BARMM		8,030	11,298	19,328			8,001	11,342	19,343		100.08%
Total	1,818,375	851,031	782,362	1,633,393	88.76%	1,715,887	751,592	677,132	1,428,724	82.14%	87.47%

Source: TESDA-ICTO | Data generated from T2MIS from January 1, 2023 to December 31, 2023

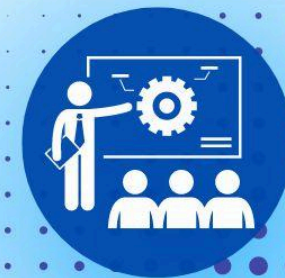


Table 2. Number of Enrolled and Graduates by Region, Province and Sex: CY 2023

Region	Province	Enrolled			Graduates		
		Female	Male	Total	Female	Male	Total
NCR	CAMANAVA	22,881	14,107	36,988	11,843	20,969	32,812
NCR	City of Manila	19,651	13,721	33,372	13,181	18,945	32,126
NCR	MUNTIPARLASTAPAT	17,629	15,778	33,407	12,700	15,284	27,984
NCR	PAMAMARISAN	19,160	12,168	31,328	11,260	18,094	29,354
NCR	PASMAK	12,134	11,256	23,390	7,003	12,141	19,144
NCR	Quezon City	16,278	9,452	25,730	8,645	14,890	23,535
NCR, Sub-Total		107,733	76,482	184,215	64,632	100,323	164,955
CAR	Abra	5,253	5,210	10,463	4,686	4,813	9,499
CAR	Apayao	3,057	2,073	5,130	2,058	3,119	5,177
CAR	Benguet	11,793	11,673	23,466	10,244	10,606	20,850
CAR	Ifugao	5,925	4,274	10,199	4,227	5,940	10,167
CAR	Kalinga	4,425	4,390	8,815	4,527	4,656	9,183
CAR	Mountain Province	4,351	2,907	7,258	2,793	4,166	6,959
CAR, Sub-total		34,804	30,527	65,331	28,535	33,300	61,835
I	Ilocos Norte	12,877	8,686	21,563	6,149	9,144	15,293
I	Ilocos Sur	8,668	7,870	16,538	7,269	8,001	15,270
I	La Union	6,522	12,377	18,899	12,062	6,301	18,363
I	Pangasinan	21,658	26,264	47,922	15,647	12,515	28,162
I, Sub-total		49,725	55,197	104,922	41,127	35,961	77,088
II	Batanes	927	538	1,465	493	926	1,419
II	Cagayan	14,336	16,405	30,741	14,831	13,102	27,933



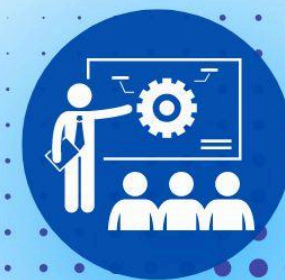
Region	Province	Enrolled			Graduates		
		Female	Male	Total	Female	Male	Total
II	Isabela	21,320	24,631	45,951	23,129	20,276	43,405
II	Nueva Vizcaya	6,947	5,481	12,428	5,529	6,951	12,480
II	Quirino	4,787	4,111	8,898	4,159	4,991	9,150
II, Sub-total		48,317	51,166	99,483	48,141	46,246	94,387
III	Aurora	3,965	3,521	7,486	3,538	3,879	7,417
III	Bataan	7,803	7,225	15,028	6,434	7,386	13,820
III	Bulacan	34,861	21,262	56,123	18,945	31,199	50,144
III	Nueva Ecija	15,017	15,827	30,844	12,829	12,194	25,023
III	Pampanga	17,019	16,035	33,054	14,696	15,151	29,847
III	Tarlac	6,485	8,022	14,507	6,766	5,058	11,824
III	Zambales	4,024	5,420	9,444	4,245	2,918	7,163
III, Sub-total		89,174	77,312	166,486	67,453	77,785	145,238
IV-A	Batangas	4,794	7,825	12,619	6,412	4,420	10,832
IV-A	Cavite	13,332	10,889	24,221	9,983	12,054	22,037
IV-A	Laguna	12,240	12,646	24,886	9,700	11,283	20,983
IV-A	Quezon	8,851	9,401	18,252	8,067	7,621	15,688
IV-A	Rizal	6,262	5,783	12,045	4,756	5,358	10,114
IV-A, Sub-total		45,479	46,544	92,023	38,918	40,736	79,654
IV-B	Marinduque	2,648	3,247	5,895	3,167	2,536	5,703
IV-B	Occidental Mindoro	4,305	3,988	8,293	3,852	4,012	7,864
IV-B	Oriental Mindoro	10,325	9,228	19,553	8,444	9,589	18,033
IV-B	Palawan	7,616	9,681	17,297	9,394	7,500	16,894



Region	Province	Enrolled			Graduates		
		Female	Male	Total	Female	Male	Total
IV-B	Romblon	2,468	2,345	4,813	2,241	2,434	4,675
IV-B, Sub-total		27,362	28,489	55,851	27,098	26,071	53,169
V	Albay	12,378	11,769	24,147	11,069	11,951	23,020
V	Camarines Norte	6,868	3,956	10,824	3,492	5,932	9,424
V	Camarines Sur	9,538	9,102	18,640	7,551	8,378	15,929
V	Catanduanes	2,193	1,484	3,677	1,327	1,961	3,288
V	Masbate	5,277	4,348	9,625	3,759	4,755	8,514
V	Sorsogon	4,875	5,914	10,789	5,299	4,326	9,625
V, Sub-total		41,129	36,573	77,702	32,497	37,303	69,800
VI	Aklan	3,545	4,001	7,546	3,329	3,091	6,420
VI	Antique	3,646	4,797	8,443	4,340	3,590	7,930
VI	Capiz	6,406	6,030	12,436	5,530	6,305	11,835
VI	Guimaras	1,822	1,802	3,624	1,769	1,784	3,553
VI	Iloilo	7,586	8,250	15,836	6,710	6,809	13,519
VI	Negros Occidental	5,643	7,450	13,093	6,588	5,591	12,179
VI, Sub-total		28,648	32,330	60,978	28,266	27,170	55,436
VII	Bohol	14,369	13,283	27,652	12,363	12,766	25,129
VII	Cebu	25,641	24,215	49,856	18,563	20,340	38,903
VII	Negros Oriental	23,024	14,219	37,243	8,942	16,840	25,782
VII	Siquijor	3,658	2,422	6,080	2,353	3,592	5,945
VII, Sub-total		66,692	54,139	120,831	42,221	53,538	95,759



Region	Province	Enrolled			Graduates		
		Female	Male	Total	Female	Male	Total
VIII	Biliran	2,629	3,208	5,837	2,732	2,426	5,158
VIII	Eastern Samar	6,650	6,504	13,154	5,751	6,153	11,904
VIII	Leyte	32,959	26,370	59,329	18,934	20,913	39,847
VIII	Northern Samar	8,376	7,871	16,247	7,080	7,808	14,888
VIII	Samar (Western Samar)	6,180	5,613	11,793	5,824	6,253	12,077
VIII	Southern Leyte	4,837	4,522	9,359	4,226	4,597	8,823
VIII, Sub-total		61,631	54,088	115,719	44,547	48,150	92,697
IX	Zamboanga City/Isabela City	12,716	5,232	17,948	4,277	10,466	14,743
IX	Zamboanga del Norte	12,655	9,859	22,514	8,660	11,318	19,978
IX	Zamboanga del Sur	15,007	13,221	28,228	12,214	14,175	26,389
IX	Zamboanga Sibugay	14,596	10,431	25,027	9,638	14,017	23,655
IX, Sub-total		54,974	38,743	93,717	34,789	49,976	84,765
X	Bukidnon	12,778	10,402	23,180	9,608	11,980	21,588
X	Camiguin	1,905	947	2,852	846	1,766	2,612
X	Lanao del Norte	13,267	11,905	25,172	11,349	13,082	24,431
X	Misamis Occidental	6,564	6,282	12,846	4,373	5,083	9,456
X	Misamis Oriental	14,330	13,020	27,350	13,115	13,840	26,955
X, Sub-total		48,844	42,556	91,400	39,291	45,751	85,042



TRAINING OUTPUT



Region	Province	Enrolled			Graduates		
		Female	Male	Total	Female	Male	Total
XI	Compostela Valley	10,985	10,802	21,787	10,300	10,300	20,600
XI	Davao del Norte	9,570	9,770	19,340	8,875	7,810	16,685
XI	Davao del Sur	22,721	19,867	42,588	15,245	17,704	32,949
XI	Davao Occidental	3,292	2,925	6,217	2,908	3,139	6,047
XI	Davao Oriental	9,857	8,793	18,650	6,307	6,999	13,306
XI, Sub-total		56,425	52,157	108,582	43,635	45,952	89,587
XII	North Cotabato	13,716	18,420	32,136	15,631	11,672	27,303
XII	Sarangani	9,896	15,771	25,667	12,092	8,219	20,311
XII	South Cotabato	8,828	10,482	19,310	10,693	8,641	19,334
XII	Sultan Kudarat	7,763	12,618	20,381	12,215	7,274	19,489
XII, Sub-total		40,203	57,291	97,494	50,631	35,806	86,437
CARAGA	Agusan del Norte	8,541	6,641	15,182	6,108	8,304	14,412
CARAGA	Agusan del Sur	7,504	11,721	19,225	10,298	7,034	17,332
CARAGA	Dinagat Islands	4,941	2,537	7,478	2,649	4,800	7,449
CARAGA	Surigao del Norte	11,853	8,578	20,431	7,720	11,134	18,854
CARAGA	Surigao del Sur	9,022	7,993	17,015	7,234	8,251	15,485
CARAGA, Sub-total		41,861	37,470	79,331	34,009	39,523	73,532
BARMM	Basilan	1,257	1,967	3,224	1,997	1,286	3,283
BARMM	Lanao del Sur	2,083	2,286	4,369	2,060	1,917	3,977
BARMM	Maguindanao	2,643	4,385	7,028	4,604	2,649	7,253
BARMM	Sulu	1,187	1,766	2,953	1,797	1,288	3,085
BARMM	Tawi-Tawi	860	894	1,754	884	861	1,745





Region	Province	Enrolled			Graduates		
		Female	Male	Total	Female	Male	Total
BARMM, Sub-total		8,030	11,298	19,328	11,342	8,001	19,343
Total		851,031	782,362	1,633,393	677,132	751,592	1,428,724

Source: TESDA-ICTO | Data generated from T2MIS from January 1, 2023 to December 31, 2023



Table 3. Number of Assessed and Certified by Region and Sex: CY 2023

Region	Assessed					Certified					Certification Rate
	Target	Output		Total	(%)	Target	Output		Total	(%)	
		Female	Male		Accomp		Female	Male		Accomp	
NCR	166,565	133,410	83,479	216,889	130.21%	153,240	127,410	81,198	208,608	136.13%	96.2%
CAR	44,806	18,870	18,891	37,761	84.28%	41,222	16,506	17,429	33,935	82.32%	89.9%
I	96,089	23,761	30,666	54,427	56.64%	88,402	21,775	28,518	50,293	56.89%	92.4%
II	68,549	19,720	25,334	45,054	65.73%	63,065	18,289	24,066	42,355	67.16%	94.0%
III	130,315	43,395	62,321	105,716	81.12%	119,890	40,331	58,692	99,023	82.59%	93.7%
IV-A	132,086	63,433	68,346	131,779	99.77%	121,519	59,488	64,906	124,394	102.37%	94.4%
IV-B	51,163	11,747	18,075	29,822	58.29%	47,070	10,909	17,345	28,254	60.03%	94.7%
V	56,997	18,946	22,855	41,801	73.34%	52,437	15,558	19,584	35,142	67.02%	84.1%
VI	82,760	18,676	23,245	41,921	50.65%	76,139	16,480	20,633	37,113	48.74%	88.5%
VII	102,182	30,372	41,324	71,696	70.16%	94,007	28,639	39,508	68,147	72.49%	95.0%
VIII	76,038	26,985	32,398	59,383	78.10%	69,955	25,799	31,403	57,202	81.77%	96.3%
IX	68,976	11,910	15,504	27,414	39.74%	63,458	10,721	14,149	24,870	39.19%	90.7%
X	77,116	15,365	23,478	38,843	50.37%	70,947	13,987	21,781	35,768	50.42%	92.1%
XI	78,896	25,258	26,261	51,519	65.30%	72,584	22,481	23,423	45,904	63.24%	89.1%
XII	82,458	18,591	27,987	46,578	56.49%	75,861	17,538	26,474	44,012	58.02%	94.5%
CARAGA	57,714	8,040	13,327	21,367	37.02%	53,097	6,905	11,751	18,656	35.14%	87.3%
BARMM		7,753	12,442	20,195			7,107	11,549	18,656		92.4%
Central Office		809	627	1,436			721	510	1,231		85.7%
Total	1,372,710	497,041	546,560	1,043,601	74.55%	1,262,893	460,644	512,919	973,563	75.61%	93.3%

Source: TESDA-Certification Office | Central Office consist of the following: Overseas Assessment, Portfolio Assessment, RLA, REPM

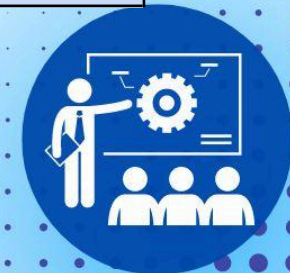


Table 4. Number of Assessed and Certified by Region, Province and Sex: CY 2023

Region	Province	Assessed			Certified		
		Female	Male	Total	Female	Male	Total
NCR	CAMANAVA	13,292	16,323	29,615	13,094	16,231	29,325
NCR	City of Manila	41,254	12,691	53,945	38,644	12,238	50,882
NCR	MUNTIPARLASTAPAT	19,649	18,931	38,580	18,821	18,284	37,105
NCR	PAMAMARISAN	17,700	12,561	30,261	16,568	11,893	28,461
NCR	PASMAK	30,739	13,203	43,942	29,885	12,979	42,864
NCR	Quezon City	10,776	9,770	20,546	10,398	9,573	19,971
NCR, Sub-total		133,410	83,479	216,889	127,410	81,198	208,608
CAR	Abra	2,223	3,040	5,263	2,070	2,915	4,985
CAR	Apayao	1,243	970	2,213	1,195	947	2,142
CAR	Benguet	9,236	9,036	18,272	7,461	7,987	15,448
CAR	Ifugao	1,020	1,379	2,399	953	1,342	2,295
CAR	Kalinga	2,516	3,280	5,796	2,255	3,087	5,342
CAR	Mountain Province	2,632	1,186	3,818	2,572	1,151	3,723
CAR, Sub-total		18,870	18,891	37,761	16,506	17,429	33,935
I	Ilocos Norte	2,225	2,573	4,798	1,913	2,190	4,103
I	Ilocos Sur	5,001	5,831	10,832	4,833	5,552	10,385
I	La Union	3,945	6,433	10,378	3,695	6,073	9,768
I	Pangasinan	12,590	15,829	28,419	11,334	14,703	26,037
I, Sub-total		23,761	30,666	54,427	21,775	28,518	50,293
II	Batanes	50	80	130	48	80	128
II	Cagayan	9,396	10,414	19,810	9,126	10,121	19,247
II	Isabela	7,534	11,164	18,698	6,604	10,380	16,984



Region	Province	Assessed			Certified		
		Female	Male	Total	Female	Male	Total
II	Nueva Vizcaya	1,917	2,246	4,163	1,732	2,130	3,862
II	Quirino	823	1,430	2,253	779	1,355	2,134
II, Sub-total		19,720	25,334	45,054	18,289	24,066	42,355
III	Aurora	1,796	1,371	3,167	1,667	1,273	2,940
III	Bataan	4,847	7,786	12,633	4,577	7,303	11,880
III	Bulacan	11,683	19,412	31,095	11,043	18,675	29,718
III	Nueva Ecija	8,905	9,616	18,521	8,022	8,888	16,910
III	Pampanga	9,823	13,313	23,136	9,261	12,488	21,749
III	Tarlac	4,134	7,137	11,271	3,903	6,740	10,643
III	Zambales	2,207	3,686	5,893	1,858	3,325	5,183
III, Sub-total		43,395	62,321	105,716	40,331	58,692	99,023
IV-A	Batangas	9,427	16,530	25,957	8,943	15,758	24,701
IV-A	Cavite	7,218	9,505	16,723	6,820	8,886	15,706
IV-A	Laguna	30,096	21,910	52,006	28,359	21,144	49,503
IV-A	Quezon	11,941	13,778	25,719	11,141	13,031	24,172
IV-A	Rizal	4,751	6,623	11,374	4,225	6,087	10,312
IV-A, Sub-total		63,433	68,346	131,779	59,488	64,906	124,394
IV-B	Marinduque	1,230	2,040	3,270	1,198	1,994	3,192
IV-B	Occidental Mindoro	1,187	1,998	3,185	1,126	1,899	3,025
IV-B	Oriental Mindoro	4,332	6,102	10,434	4,204	5,974	10,178
IV-B	Palawan	3,761	6,191	9,952	3,177	5,792	8,969
IV-B	Romblon	1,237	1,744	2,981	1,204	1,686	2,890





Region	Province	Assessed			Certified		
		Female	Male	Total	Female	Male	Total
IV-B, Sub-total		11,747	18,075	29,822	10,909	17,345	28,254
V	Albay	4,906	6,092	10,998	4,145	5,369	9,514
V	Camarines Norte	2,898	3,056	5,954	2,419	2,520	4,939
V	Camarines Sur	5,925	7,577	13,502	4,737	6,490	11,227
V	Catanduanes	1,006	1,192	2,198	864	1,045	1,909
V	Masbate	2,325	2,674	4,999	1,891	2,344	4,235
V	Sorsogon	1,886	2,264	4,150	1,502	1,816	3,318
V, Sub-total		18,946	22,855	41,801	15,558	19,584	35,142
VI	Aklan	3,365	2,837	6,202	2,727	2,461	5,188
VI	Antique	939	1,958	2,897	825	1,788	2,613
VI	Capiz	1,789	2,286	4,075	1,710	2,149	3,859
VI	Guimaras	456	543	999	414	489	903
VI	Iloilo	6,727	7,841	14,568	6,026	7,214	13,240
VI	Negros Occidental	5,400	7,780	13,180	4,778	6,532	11,310
VI, Sub-total		18,676	23,245	41,921	16,480	20,633	37,113
VII	Bohol	6,284	6,259	12,543	5,870	6,060	11,930
VII	Cebu	16,796	27,330	44,126	16,122	26,283	42,405
VII	Negros Oriental	6,195	6,558	12,753	5,637	6,126	11,763
VII	Siquijor	1,097	1,177	2,274	1,010	1,039	2,049
VII, Sub-total		30,372	41,324	71,696	28,639	39,508	68,147
VIII	Biliran	1,389	1,531	2,920	1,317	1,459	2,776
VIII	Eastern Samar	4,237	5,187	9,424	4,025	4,887	8,912
VIII	Leyte	11,616	14,628	26,244	11,180	14,321	25,501



TRAINING OUTPUT



Region	Province	Assessed			Certified		
		Female	Male	Total	Female	Male	Total
VIII	Northern Samar	3,258	3,056	6,314	2,957	2,831	5,788
VIII	Samar (Western Samar)	3,546	4,248	7,794	3,477	4,212	7,689
VIII	Southern Leyte	2,939	3,748	6,687	2,843	3,693	6,536
VIII, Sub-total		26,985	32,398	59,383	25,799	31,403	57,202
IX	Zamboanga City/Isabela City	2,369	2,919	5,288	2,165	2,628	4,793
IX	Zamboanga del Norte	3,452	4,745	8,197	3,043	4,309	7,352
IX	Zamboanga del Sur	3,904	4,818	8,722	3,613	4,507	8,120
IX	Zamboanga Sibugay	2,185	3,022	5,207	1,900	2,705	4,605
IX, Sub-total		11,910	15,504	27,414	10,721	14,149	24,870
X	Bukidnon	3,420	4,699	8,119	3,029	4,348	7,377
X	Camiguin	393	277	670	322	246	568
X	Lanao del Norte	4,238	6,112	10,350	3,781	5,563	9,344
X	Misamis Occidental	3,031	4,424	7,455	2,933	4,282	7,215
X	Misamis Oriental	4,283	7,966	12,249	3,922	7,342	11,264
X, Sub-total		15,365	23,478	38,843	13,987	21,781	35,768
XI	Compostela Valley	2,785	2,750	5,535	2,390	2,447	4,837
XI	Davao del Norte	4,507	5,251	9,758	4,088	4,929	9,017
XI	Davao del Sur	12,428	13,770	26,198	11,052	11,806	22,858
XI	Davao Occidental	595	1,124	1,719	536	1,052	1,588



Region	Province	Assessed			Certified		
		Female	Male	Total	Female	Male	Total
XI	Davao Oriental	4,943	3,366	8,309	4,415	3,189	7,604
XI, Sub-total		25,258	26,261	51,519	22,481	23,423	45,904
XII	North Cotabato	3,675	7,219	10,894	3,428	6,759	10,187
XII	Sarangani	6,113	7,684	13,797	5,625	7,171	12,796
XII	South Cotabato	5,866	7,784	13,650	5,733	7,592	13,325
XII	Sultan Kudarat	2,937	5,300	8,237	2,752	4,952	7,704
XII, Sub-total		18,591	27,987	46,578	17,538	26,474	44,012
CARAGA	Agusan del Norte	2,093	2,987	5,080	1,797	2,613	4,410
CARAGA	Agusan del Sur	1,481	2,673	4,154	1,139	2,339	3,478
CARAGA	Dinagat Islands	627	763	1,390	569	707	1,276
CARAGA	Surigao del Norte	1,725	3,414	5,139	1,590	2,901	4,491
CARAGA	Surigao del Sur	2,114	3,490	5,604	1,810	3,191	5,001
CARAGA, Sub-total		8,040	13,327	21,367	6,905	11,751	18,656
BARMM	Basilan	1,255	2,018	3,273	1,240	1,976	3,216
BARMM	Lanao del Sur	1,847	1,705	3,552	1,552	1,494	3,046
BARMM	Maguindanao	2,984	6,045	9,029	2,827	5,684	8,511
BARMM	Sulu	781	1,556	2,337	646	1,316	1,962
BARMM	Tawi-Tawi	886	1,118	2,004	842	1,079	1,921
BARMM, Sub-total		7,753	12,442	20,195	7,107	11,549	18,656
Central Office	Overseas Assessment	656	322	978	601	301	902
Central Office	Portfolio Assessment	5	42	47	3	38	41
Central Office	REPM			0			0



Region	Province	Assessed			Certified		
		Female	Male	Total	Female	Male	Total
Central Office	RLA	148	263	411	117	171	288
Central Office, Sub-total		809	627	1,436	721	510	1,231
Total		497,041	546,560	1,043,601	460,644	512,919	973,563

Source: TESDA-Certification Office | Data as of December 2023



Table 5. Number of Enrolled and Graduates by Delivery Mode and Sex: CY 2023

Delivery Mode	Enrolled			Graduates		
	Female	Male	Total	Female	Male	Total
Institution-Based	297,307	340,064	637,371	253,147	283,869	537,016
Enterprise-Based	65,009	52,572	117,581	62,860	48,518	111,378
Community-Based	363,427	268,220	631,647	332,517	240,928	573,445
subtotal	725,743	660,856	1,386,599	648,524	573,315	1,221,839
Monitored	125,288	121,506	246,794	103,068	103,817	206,885
Total	851,031	782,362	1,633,393	751,592	677,132	1,428,724

Source: TESDA-ICTO | Data generated from T2MIS from January 1, 2023 to December 31, 2023

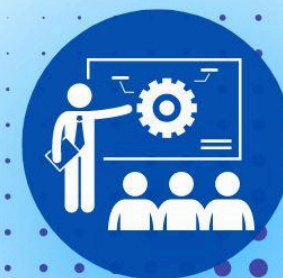


Table 6. Number of Enrolled by Region and Delivery Mode: CY 2023

Region	Enrolled														
	Institution-Based			Enterprise-Based			Community-Based			Monitored			All Delivery Mode		
	Female	Male	Total	Female	Male	Total	Female	Male	Total	Female	Male	Total	Female	Male	Total
NCR	50,945	44,105	95,050	4,169	3,437	7,606	42,140	20,357	62,497	10,479	8,583	19,062	107,733	76,482	184,215
CAR	14,681	16,422	31,103	1,688	969	2,657	9,683	5,623	15,306	8,752	7,513	16,265	34,804	30,527	65,331
I	16,555	20,728	37,283	3,149	2,663	5,812	14,591	11,282	25,873	15,430	20,524	35,954	49,725	55,197	104,922
II	10,388	13,440	23,828	3,193	2,335	5,528	24,768	22,604	47,372	9,968	12,787	22,755	48,317	51,166	99,483
III	28,835	34,000	62,835	6,393	5,463	11,856	46,716	31,175	77,891	7,230	6,674	13,904	89,174	77,312	166,486
IV-A	24,578	30,089	54,667	3,696	4,453	8,149	17,012	11,823	28,835	193	179	372	45,479	46,544	92,023
IV-B	9,564	11,637	21,201	2,929	2,065	4,994	13,984	13,823	27,807	885	964	1,849	27,362	28,489	55,851
V	15,950	18,654	34,604	4,390	2,603	6,993	19,899	14,649	34,548	890	667	1,557	41,129	36,573	77,702
VI	12,579	16,729	29,308	3,578	2,647	6,225	10,631	11,129	21,760	1,860	1,825	3,685	28,648	32,330	60,978
VII	20,510	19,754	40,264	3,884	3,713	7,597	28,278	20,097	48,375	14,020	10,575	24,595	66,692	54,139	120,831
VIII	22,061	26,992	49,053	5,103	3,726	8,829	17,148	11,027	28,175	17,319	12,343	29,662	61,631	54,088	115,719
IX	10,291	11,186	21,477	2,297	1,682	3,979	30,471	14,018	44,489	11,915	11,857	23,772	54,974	38,743	93,717
X	17,116	21,809	38,925	9,415	6,062	15,477	20,327	12,381	32,708	1,986	2,304	4,290	48,844	42,556	91,400
XI	19,800	22,279	42,079	3,072	2,315	5,387	17,453	13,481	30,934	16,100	14,082	30,182	56,425	52,157	108,582
XII	10,963	15,440	26,403	3,562	4,455	8,017	18,158	27,919	46,077	7,520	9,477	16,997	40,203	57,291	97,494
CARAGA	5,529	8,008	13,537	4,097	2,596	6,693	31,787	26,376	58,163	448	490	938	41,861	37,470	79,331
BARMM	6,962	8,792	15,754	394	1,388	1,782	381	456	837	293	662	955	8,030	11,298	19,328
Total	297,307	340,064	637,371	65,009	52,572	117,581	363,427	268,220	631,647	125,288	121,506	246,794	851,031	782,362	1,633,393

Source: TESDA-ICTO | Data generated from T2MIS from January 1, 2023 to December 31, 2023



Table 7. Number of Graduates by Region and Delivery Mode: CY 2023

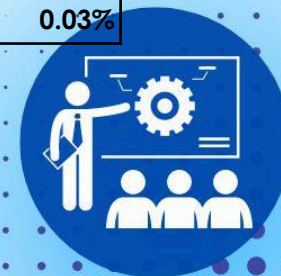
Region	Graduates														
	Institution-Based			Enterprise-Based			Community-Based			Monitored			All Delivery Mode		
	Female	Male	Total	Female	Male	Total	Female	Male	Total	Female	Male	Total	Female	Male	Total
NCR	47,167	35,750	82,917	3,468	2,915	6,383	40,402	18,993	59,395	9,286	6,974	16,260	100,323	64,632	164,955
CAR	13,319	14,531	27,850	1,691	985	2,676	9,579	5,554	15,133	8,711	7,465	16,176	33,300	28,535	61,835
I	13,516	17,388	30,904	2,570	2,264	4,834	11,009	8,855	19,864	8,866	12,620	21,486	35,961	41,127	77,088
II	9,125	11,708	20,833	3,733	2,630	6,363	23,308	21,116	44,424	10,080	12,687	22,767	46,246	48,141	94,387
III	22,669	27,861	50,530	5,304	4,924	10,228	43,098	28,063	71,161	6,714	6,605	13,319	77,785	67,453	145,238
IV-A	21,845	25,128	46,973	3,498	3,172	6,670	15,201	10,440	25,641	192	178	370	40,736	38,918	79,654
IV-B	8,823	10,594	19,417	2,935	2,095	5,030	13,480	13,476	26,956	833	933	1,766	26,071	27,098	53,169
V	13,670	16,352	30,022	3,977	2,370	6,347	18,842	13,251	32,093	814	524	1,338	37,303	32,497	69,800
VI	11,803	14,620	26,423	3,995	2,842	6,837	9,798	9,424	19,222	1,574	1,380	2,954	27,170	28,266	55,436
VII	15,057	15,319	30,376	3,741	2,619	6,360	21,682	14,248	35,930	13,058	10,035	23,093	53,538	42,221	95,759
VIII	16,751	20,879	37,630	4,654	3,171	7,825	15,832	10,132	25,964	10,913	10,365	21,278	48,150	44,547	92,697
IX	8,865	9,645	18,510	2,136	1,553	3,689	28,698	13,526	42,224	10,277	10,065	20,342	49,976	34,789	84,765
X	14,167	17,900	32,067	10,387	6,606	16,993	18,739	11,391	30,130	2,458	3,394	5,852	45,751	39,291	85,042
XI	15,771	18,098	33,869	2,872	2,164	5,036	15,566	12,478	28,044	11,743	10,895	22,638	45,952	43,635	89,587
XII	9,360	13,257	22,617	3,451	4,015	7,466	16,097	24,658	40,755	6,898	8,701	15,599	35,806	50,631	86,437
CARAGA	4,244	6,202	10,446	4,065	2,535	6,600	30,825	24,874	55,699	389	398	787	39,523	34,009	73,532
BARMM	6,995	8,637	15,632	383	1,658	2,041	361	449	810	262	598	860	8,001	11,342	19,343
Total	253,147	283,869	537,016	62,860	48,518	111,378	332,517	240,928	573,445	103,068	103,817	206,885	751,592	677,132	1,428,724

Source: TESDA-ICTO | Data generated from T2MIS from January 1, 2023 to December 31, 2023



Table 8. Number of Enrolled and Graduates by Sector and Sex: CY 2023

Sector Title	Enrolled				Graduated			
	Female	Male	Total	(%) Dist.	Female	Male	Total	(%) Dist.
Agriculture, Forestry and Fishery	142,198	113,705	255,903	15.67%	134,354	109,906	244,260	17.10%
Automotive and Land Transportation	31,644	98,045	129,689	7.94%	28,135	86,589	114,724	8.03%
Chemicals / Plastics / Petrochemicals	317	165	482	0.03%	317	165	482	0.03%
Construction	10,374	57,369	67,743	4.15%	9,073	52,223	61,296	4.29%
Creative	579	421	1,000	0.06%	620	411	1,031	0.07%
Decorative Crafts	1,598	343	1,941	0.12%	1,556	316	1,872	0.13%
Electrical and Electronics	28,609	78,796	107,405	6.58%	23,814	65,266	89,080	6.23%
Footwear and Leathergoods	42	65	107	0.01%	43	52	95	0.01%
Furniture and Fixtures	64	176	240	0.01%	63	146	209	0.01%
Garments	19,595	3,463	23,058	1.41%	17,395	3,118	20,513	1.44%
Heating, Ventilation, Airconditioning and Refrigeration	424	4,844	5,268	0.32%	295	4,181	4,476	0.31%
Human Health / Health Care	60,905	23,981	84,886	5.20%	48,152	18,165	66,317	4.64%
Information and Communication Technology	32,527	21,711	54,238	3.32%	30,544	18,233	48,777	3.41%
Logistics	169	420	589	0.04%	171	419	590	0.04%
Maritime	1,074	13,362	14,436	0.88%	685	8,057	8,742	0.61%
Metals and Engineering	6,039	64,095	70,134	4.29%	5,432	58,722	64,154	4.49%
Others	158,262	116,742	275,004	16.84%	141,153	99,603	240,756	16.85%
Processed Food & Beverages	52,801	23,392	76,193	4.66%	49,540	22,299	71,839	5.03%
Pyrotechnics	265	167	432	0.03%	241	150	391	0.03%



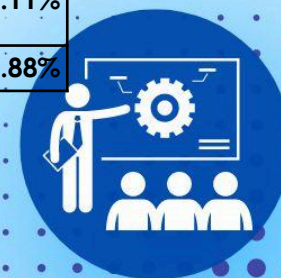
Sector Title	Enrolled				Graduated			
	Female	Male	Total	(%) Dist.	Female	Male	Total	(%) Dist.
Social, Community Development and Other Services	97,650	59,768	157,418	9.64%	86,999	51,313	138,312	9.68%
Tourism (Hotel and Restaurant)	195,672	92,431	288,103	17.64%	165,236	71,304	236,540	16.56%
TVET	8,513	7,692	16,205	0.99%	6,157	5,414	11,571	0.81%
Utilities (Water Supply, Sewerage, Waste Management, etc)	514	603	1,117	0.07%	494	609	1,103	0.08%
Visual Arts	90	144	234	0.01%	54	80	134	0.01%
Wholesale and Retail Trading	1,106	462	1,568	0.10%	1,069	391	1,460	0.10%
Total	851,031	782,362	1,633,393	100.00%	751,592	677,132	1,428,724	100.00%

Source: TESDA-ICTO | Data generated from T2MIS from January 1, 2023 to December 31, 2023



Table 9. Number of Assessed and Certified by Sector and Sex: CY 2023

Sector	Assessed				Certified			
	Female	Male	Total	(%) Dist.	Female	Male	Total	(%) Dist.
Agriculture, Forestry and Fishery	53,014	46,576	99,590	9.54%	51,204	44,903	96,107	9.54%
Automotive and Land Transportation	14,843	89,441	104,284	9.99%	13,724	85,375	99,099	9.99%
Chemicals / Plastics / Petrochemicals	0	0	0	0.00%	0	0	0	0.00%
Construction	7,867	84,296	92,163	8.83%	7,437	81,328	88,765	8.83%
Creative Sector	0	0	0	0.00%	0	0	0	0.00%
Decorative Crafts	0	0	0	0.00%	0	0	0	0.00%
Electrical and Electronics	28,815	92,529	121,344	11.63%	23,709	82,605	106,314	11.63%
Footwear and Leathergoods	0	0	0	0.00%	0	0	0	0.00%
Furniture and Fixtures	0	31	31	0.00%	0	31	31	0.00%
Garments	9,147	1,246	10,393	1.00%	7,899	1,097	8,996	1.00%
Heating, Ventilation, Airconditioning and Refrigeration	158	4,901	5,059	0.48%	143	4,513	4,656	0.48%
Human Health / Health Care	55,603	15,052	70,655	6.77%	52,395	14,195	66,590	6.77%
Information and Communication Technology	2,426	3,594	6,020	0.58%	1,556	2,516	4,072	0.58%
Logistics	13	54	67	0.01%	13	54	67	0.01%
Maritime	1,310	17,862	19,172	1.84%	1,297	17,663	18,960	1.84%
Metals and Engineering	5,885	74,225	80,110	7.68%	5,462	70,468	75,930	7.68%
Processed Food & Beverages	3,620	5,558	9,178	0.88%	3,448	5,413	8,861	0.88%
Pyrotechnics	0	0	0	0.00%	0	0	0	0.00%
Social, Community Development and Other Services	127,533	9,259	136,792	13.11%	115,108	7,019	122,127	13.11%
Tourism (Hotel and Restaurant)	182,827	97,675	280,502	26.88%	174,097	92,361	266,458	26.88%



Sector	Assessed				Certified			
	Female	Male	Total	(%) Dist.	Female	Male	Total	(%) Dist.
TVET	3,097	2,664	5,761	0.55%	2,319	1,836	4,155	0.55%
Utilities (Water Supply, Sewerage, Waste Management, etc)	3	1,053	1,056	0.10%	3	1,042	1,045	0.10%
Visual Arts	351	282	633	0.06%	339	264	603	0.06%
Wholesale and Retail Trading	529	262	791	0.08%	491	236	727	0.08%
Total	497,041	546,560	1,043,601	100.00%	460,644	512,919	973,563	100.00%

Source: TESDA-Certification Office | Data as of December 2023

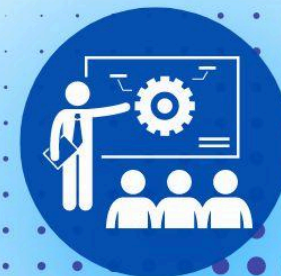


Table 10. Number of Enrolled and Graduates by Type of Provider, by Region and Sex: CY 2023

Region	Enrolled						Graduates					
	Private			Public			Private			Public		
	Female	Male	Total	Female	Male	Total	Female	Male	Total	Female	Male	Total
NCR	59,354	48,343	107,697	48,379	28,139	76,518	54,772	40,352	95,124	45,551	24,280	69,831
CAR	13,994	12,214	26,208	20,810	18,313	39,123	12,699	10,961	23,660	20,601	17,574	38,175
I	17,906	18,831	36,737	31,819	36,366	68,185	14,741	15,862	30,603	21,220	25,265	46,485
II	16,180	16,386	32,566	32,137	34,780	66,917	15,802	15,459	31,261	30,444	32,682	63,126
III	42,847	46,248	89,095	46,327	31,064	77,391	35,156	38,904	74,060	42,629	28,549	71,178
IV-A	27,249	32,571	59,820	18,230	13,973	32,203	24,385	26,516	50,901	16,351	12,402	28,753
IV-B	11,792	12,632	24,424	15,570	15,857	31,427	11,091	11,821	22,912	14,980	15,277	30,257
V	15,745	13,283	29,028	25,384	23,290	48,674	13,957	12,260	26,217	23,346	20,237	43,583
VI	18,065	17,267	35,332	10,583	15,063	25,646	17,590	15,497	33,087	9,580	12,769	22,349
VII	25,714	23,873	49,587	40,978	30,266	71,244	19,358	17,765	37,123	34,180	24,456	58,636
VIII	23,615	20,863	44,478	38,016	33,225	71,241	19,095	16,596	35,691	29,055	27,951	57,006
IX	18,048	16,290	34,338	36,926	22,453	59,379	15,374	13,837	29,211	34,602	20,952	55,554
X	24,187	21,908	46,095	24,657	20,648	45,305	22,930	19,559	42,489	22,821	19,732	42,553
XI	25,400	24,574	49,974	31,025	27,583	58,608	18,529	19,180	37,709	27,423	24,455	51,878
XII	26,173	36,583	62,756	14,030	20,708	34,738	22,419	30,727	53,146	13,387	19,904	33,291
CARAGA	8,791	6,484	15,275	33,070	30,986	64,056	7,527	5,127	12,654	31,996	28,882	60,878
BARMM	4,937	7,442	12,379	3,093	3,856	6,949	5,132	7,702	12,834	2,869	3,640	6,509
Total	379,997	375,792	755,789	471,034	406,570	877,604	330,557	318,125	648,682	421,035	359,007	780,042

Source: TESDA-ICTO | Data generated from T2MIS from January 1, 2023 to December 31, 2023

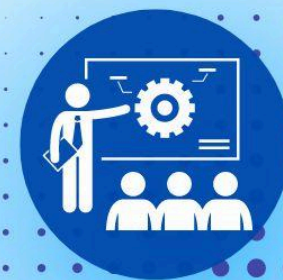
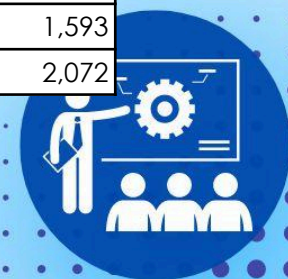


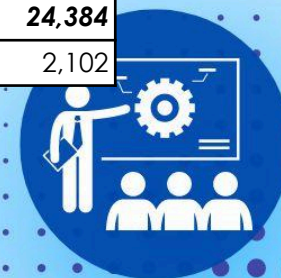
Table 11. Number of Enrolled and Graduates by TTI, by Region and Sex: CY 2023

Region	TTI	Enrolled			Graduates		
		Female	Male	Total	Female	Male	Total
Total		241,495	220,964	462,459	217,882	193,252	411,134
NCR	TESDA Navotas Training Institute	6,963	2,551	9,514	6,938	2,373	9,311
NCR	Tesda Manila Training and Assessment Center (TMTAC)	6,724	1,951	8,675	6,517	1,905	8,422
NCR	MuntiParLasTaPat District Training and Assessment Center	858	992	1,850	760	794	1,554
NCR	Regional Training Center - NCR	379	2,349	2,728	258	2,012	2,270
NCR	Tesda Pamamarisan Training and Assessment Center (TPTAC)	2,524	924	3,448	2,435	845	3,280
NCR	Pasay-Makati District Training and Assessment Center	1,293	1,053	2,346	1,260	988	2,248
NCR	Quezon City Lingkod Bayan Skills Development Center	1,268	941	2,209	1,224	847	2,071
NCR	Human Resource Development Institute (HRDI)	60	341	401	31	236	267
NCR	National Language Skills Center (NLSC)	853	487	1,340	917	437	1,354
NCR	TESDA Women's Center	3,067	1,531	4,598	2,849	1,348	4,197
NCR	National TVET Trainers Academy	67	85	152	0	0	0
NCR, Sub-total		24,056	13,205	37,261	23,189	11,785	34,974
CAR	Provincial Training Center - Apayao	294	481	775	303	473	776
CAR	Provincial Training Center - Benguet	390	182	572	383	180	563
CAR	Cordillera State Institute of Technical Education (CSITE)	4,441	7,474	11,915	4,310	6,817	11,127
CAR, Sub-Total		5,125	8,137	13,262	4,996	7,470	12,466
I	Provincial Training Center - Banna Ilocos Norte	1,282	749	2,031	1,145	689	1,834
I	Bangui Institute of Technology	1,307	755	2,062	1,080	513	1,593
I	Marcos Agro-Industrial School	1,390	1,156	2,546	1,165	907	2,072

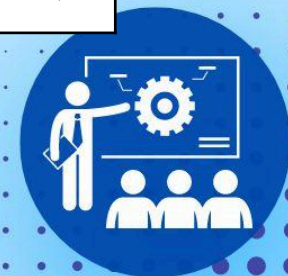




Region	TTI	Enrolled			Graduates		
		Female	Male	Total	Female	Male	Total
I	Provincial Training Center - Candon City	205	938	1,143	203	964	1,167
I	Provincial Training Center - La Union	324	563	887	307	494	801
I	Regional Training Center - La Union	361	886	1,247	355	900	1,255
I	Provincial Training Center - Pangasinan	395	1,310	1,705	391	1,253	1,644
I	Provincial Training Center - Urdaneta	119	715	834	97	686	783
I	Luciano Millan Memorial School of Arts and Trades	546	861	1,407	495	639	1,134
I	Pangasinan School of Arts and Trades	1,136	2,094	3,230	1,047	1,900	2,947
I	Pangasinan Technological Institute	1,171	860	2,031	1,051	676	1,727
I, Sub-Total		8,236	10,887	19,123	7,336	9,621	16,957
II	Aparri Polytechnic Institute	1,311	1,451	2,762	1,099	1,292	2,391
II	Provincial Training Center - Isabela	1,194	1,224	2,418	1,156	1,143	2,299
II	Isabela School of Arts & Trades	2,737	2,585	5,322	2,357	2,206	4,563
II	Lasam Institute of Technology	1,325	847	2,172	1,107	719	1,826
II	Nueva Vizcaya Polytechnic Institute	887	581	1,468	869	544	1,413
II	Provincial Training Center - Batanes	410	238	648	398	199	597
II	Provincial Training Center - Cagayan	524	470	994	543	505	1,048
II	Provincial Center for Skills Enhancement and Productivity (Nueva Viscaya)	668	393	1,061	650	391	1,041
II	Provincial Training Center - Quirino	671	990	1,661	660	959	1,619
II	Regional Training Center - II (Tuguegarao)	566	1,707	2,273	521	1,634	2,155
II	Southern Isabela College of Arts and Trades	2,582	3,801	6,383	2,230	3,202	5,432
II, Sub-Total		12,875	14,287	27,162	11,590	12,794	24,384
III	Concepcion Vocational School	1,244	851	2,095	1,246	856	2,102



Region	TTI	Enrolled			Graduates		
		Female	Male	Total	Female	Male	Total
III	Gonzalo Puyat School of Arts and Trades	488	411	899	460	391	851
III	Provincial Training Center - Baler	733	750	1,483	719	728	1,447
III	Provincial Training Center - Bataan (Orion)	2,285	479	2,764	2,307	523	2,830
III	Provincial Training Center - Calumpit	824	845	1,669	671	702	1,373
III	Provincial Training Center - Guagua	530	580	1,110	524	573	1,097
III	Provincial Training Center - Iba	425	1,040	1,465	394	961	1,355
III	Provincial Training Center - Nueva Ecija (Palayan City)	358	1,074	1,432	375	976	1,351
III	Provincial Training Center - Tarlac	568	698	1,266	547	670	1,217
III	Regional Training Center Central Luzon - Guiguinto	1,086	965	2,051	1,099	950	2,049
III	Regional Training Center Central Luzon - Mariveles	1,197	931	2,128	1,173	855	2,028
III	TESDA Korea-Philippines Information Technology Center	1,379	639	2,018	1,354	620	1,974
III, Sub-Total		11,117	9,263	20,380	10,869	8,805	19,674
IV-A	Bondoc Peninsula Technological Institute	249	358	607	176	292	468
IV-A	Jacobo Z. Gonzales Memorial School of Arts and Trades	1,321	1,514	2,835	1,168	1,193	2,361
IV-A	Provincial Technical Education and Skills Development Center (PTESDC) - Taytay	739	751	1,490	669	709	1,378
IV-A	Provincial Training Center - Lipa	341	220	561	337	216	553
IV-A	Quezon National Agricultural School	740	832	1,572	452	528	980
IV-A	Regional Training Center - CALABARZON	673	968	1,641	799	1,085	1,884
IV-A	Rizal Provincial Technical Education and Skills Development Center - Binangonan	699	585	1,284	704	633	1,337



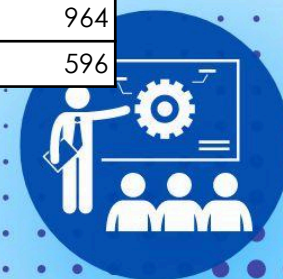
TRAINING OUTPUT



Region	TTI	Enrolled			Graduates		
		Female	Male	Total	Female	Male	Total
IV-A	Rizal Provincial Technical Education and Skills Development Center - Cainta	773	563	1,336	356	485	841
IV-A	Provincial Training Center - Paliparan	824	481	1,305	799	437	1,236
IV-A	Provincial Training Center - Rosario	846	991	1,837	821	959	1,780
IV-A	Provincial Training Center - San Antonio	358	390	748	363	403	766
IV-A	TESDA-Laguna Lake Development Authority Provincial Training Center	2,822	1,442	4,264	2,683	1,344	4,027
IV-A, Sub-Total		10,385	9,095	19,480	9,327	8,284	17,611
IV-B	Buyabod School of Arts and Trades	686	1,491	2,177	653	1,484	2,137
IV-B	Provincial Training Center - San Teodoro	860	593	1,453	795	572	1,367
IV-B	Provincial Training Center - Boac	348	206	554	333	203	536
IV-B	Provincial Training Center - Palawan	746	713	1,459	738	649	1,387
IV-B	Provincial Training Center - Romblon	878	339	1,217	845	334	1,179
IV-B	Puerto Princesa School of Arts & Trades	2,220	1,795	4,015	2,226	1,670	3,896
IV-B	Rizal Occidental Mindoro TESDA Training and Accreditation Center	1,538	775	2,313	1,412	702	2,114
IV-B	Romblon National Institute of Technology	883	918	1,801	847	830	1,677
IV-B	Simeon Suan Vocational Technical College	2,199	1,870	4,069	2,121	1,799	3,920
IV-B	Provincial Training Center - Occidental Mindoro	466	563	1,029	460	540	1,000
IV-B	Torrijos Poblacion School of Arts and Trades	672	536	1,208	609	474	1,083
IV-B, Sub-Total		11,496	9,799	21,295	11,039	9,257	20,296
V	Bulusan National Vocational Technical School	1,312	1,999	3,311	1,138	1,809	2,947

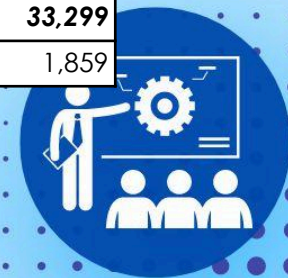


Region	TTI	Enrolled			Graduates		
		Female	Male	Total	Female	Male	Total
V	Cabugao School of Handicraft and Cottage Industries (CSHCI)	1,144	445	1,589	1,035	413	1,448
V	Camarines Sur Institute of Fisheries and Marine Sciences	4,634	3,933	8,567	4,211	3,444	7,655
V	Masbate Institute of Fisheries and Technology	1,940	1,226	3,166	1,604	815	2,419
V	Provincial Training Center - Albay (Malilipot)	468	1,246	1,714	455	1,173	1,628
V	Provincial Training Center - Guinobatan	483	1,209	1,692	447	1,173	1,620
V	Provincial Training Center - Labo	1,029	857	1,886	1,056	842	1,898
V	Provincial Training Center - Libmanan	321	490	811	270	263	533
V	Provincial Training Center - Catanduanes	544	453	997	477	397	874
V	Provincial Training Center - Masbate	793	1,054	1,847	757	1,014	1,771
V	Provincial Training Center - Sorsogon	1,036	1,023	2,059	878	771	1,649
V	Ragay Polytechnic Skills Institute	1,522	1,272	2,794	1,298	1,004	2,302
V	Regional Training Center - V (Pili)	422	1,251	1,673	351	999	1,350
V	San Francisco Institute of Science and Technology	2,528	1,421	3,949	2,322	1,264	3,586
V	Sorsogon National Agricultural School (SNAS)	1,369	1,468	2,837	1,217	1,363	2,580
V, Sub-Total		19,545	19,347	38,892	17,516	16,744	34,260
VI	Dumalag Vocational Technical School	1,437	1,229	2,666	1,300	1,042	2,342
VI	Leon Ganzon Polytechnic College	427	679	1,106	333	406	739
VI	New Lucena Polytechnic College	1,589	787	2,376	1,555	711	2,266
VI	Passi Trade School	902	1,084	1,986	741	793	1,534
VI	Provincial Training Center - Aklan (Numancia)	507	1,259	1,766	478	942	1,420
VI	Provincial Training Center - Antique (Hamtic)	120	796	916	120	844	964
VI	Provincial Training Center - Cadiz	120	378	498	148	448	596

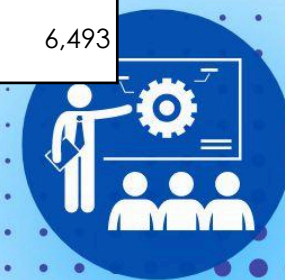




Region	TTI	Enrolled			Graduates		
		Female	Male	Total	Female	Male	Total
VI	Provincial Training Center - Capiz	872	1,838	2,710	669	1,451	2,120
VI	Provincial Training Center - Guimaras	979	1,004	1,983	979	1,002	1,981
VI	Provincial Training Center - Kabankalan	172	524	696	212	499	711
VI	Provincial Training Center - Iloilo	203	617	820	190	540	730
VI	Regional Training Center - Iloilo	121	904	1,025	125	805	930
VI	Regional Training Center - Talisay	1,018	2,019	3,037	876	1,512	2,388
VI, Sub-Total		8,467	13,118	21,585	7,726	10,995	18,721
VII	Lazi Technical Institute (LTI)	2,026	770	2,796	1,973	745	2,718
VII	Provincial Training Center - (Bilar)	1,495	1,048	2,543	1,516	1,044	2,560
VII	Provincial Training Center - (Inabanga)	445	829	1,274	454	833	1,287
VII	Provincial Training Center - (Jagna)	762	474	1,236	353	376	729
VII	Provincial Training Center - (Pilar)	1,297	1,358	2,655	737	762	1,499
VII	Provincial Training Center - (Tubigon)	1,153	618	1,771	1,133	630	1,763
VII	Provincial Training Center - Cebu (Carmen)	1,434	524	1,958	1,423	508	1,931
VII	Provincial Training Center - Cebu (Daanbantayan)	346	419	765	323	404	727
VII	Provincial Training Center - Cebu (Minglanilla)	332	333	665	239	295	534
VII	Provincial Training Center - Cebu (Samboan)	657	1,158	1,815	383	703	1,086
VII	Provincial Training Center - Cebu (Toledo)	2,088	924	3,012	2,088	923	3,011
VII	Provincial Training Center - Dumaguete	11,716	7,875	19,591	7,351	4,103	11,454
VII	Provincial Training Center - Siquijor	444	458	902	441	456	897
VII	Regional Training Center - VII (Cebu)	1,395	1,652	3,047	1,411	1,692	3,103
VII, Sub-Total		25,590	18,440	44,030	19,825	13,474	33,299
VIII	Arteche National Agricultural School (ANAS)	1,059	1,235	2,294	873	986	1,859

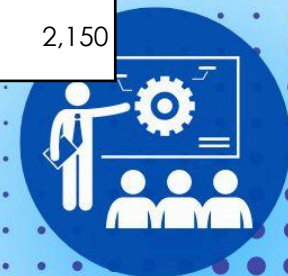


Region	TTI	Enrolled			Graduates		
		Female	Male	Total	Female	Male	Total
VIII	Balangiga National Agricultural School (BNAS)	650	999	1,649	526	774	1,300
VIII	Balicutro College of Arts and Trades	3,532	1,710	5,242	3,137	1,299	4,436
VIII	Cabucgayan National School of Arts and Trades (CNSAT)	1,208	1,772	2,980	1,016	1,306	2,322
VIII	Calubian National Vocational School (CNVS)	2,032	1,755	3,787	1,638	1,309	2,947
VIII	Las Navas Agro-Industrial School	1,513	992	2,505	1,423	895	2,318
VIII	Provincial Training Center - Biliran	323	465	788	309	438	747
VIII	Provincial Training Center - Northern Samar (Cataraman)	803	1,114	1,917	767	986	1,753
VIII	Provincial Training Center - Eastern Samar	331	388	719	325	370	695
VIII	Provincial Training Center - Leyte	1,608	1,803	3,411	1,383	1,603	2,986
VIII	Provincial Training Center - Southern Leyte	806	1,134	1,940	757	1,034	1,791
VIII	Provincial Training Center - Samar	370	764	1,134	386	750	1,136
VIII	Regional Training Center - Tacloban	2,127	2,880	5,007	1,431	2,288	3,719
VIII	Samar National School of Arts & Trades (SNSAT)	1,029	1,077	2,106	898	868	1,766
VIII, Sub-Total		17,391	18,088	35,479	14,869	14,906	29,775
IX	Dipolog School of Fisheries	4,427	2,764	7,191	3,858	2,226	6,084
IX	Provincial Training Center - Pagadian	933	1,778	2,711	887	1,667	2,554
IX	Provincial Training Center - Sindangan	4,158	3,183	7,341	4,068	3,168	7,236
IX	Provincial Training Center - Zamboanga City	2,634	1,388	4,022	1,473	1,030	2,503
IX	Provincial Training Center - Zamboanga Sibugay	2,300	1,013	3,313	2,292	997	3,289
IX	Regional Training Center -Zamboanga Peninsula	7,711	1,760	9,471	7,547	1,642	9,189
IX	Zamboanga Sibugay Polytechnic Institute (Formerly Kabasalan Institute of Technology)	4,292	2,655	6,947	4,145	2,348	6,493

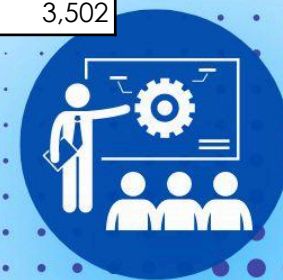




Region	TTI	Enrolled			Graduates		
		Female	Male	Total	Female	Male	Total
IX, Sub-Total		26,455	14,541	40,996	24,270	13,078	37,348
X	Cagayan de Oro Bugo School of Arts and Trades	2,188	1,587	3,775	2,157	1,489	3,646
X	Camiguin School of Arts and Trades	1,162	717	1,879	1,034	609	1,643
X	Kinoguitan National Agricultural School	1,395	1,184	2,579	1,202	977	2,179
X	Lanao Norte National Agro-Industrial School	2,013	1,812	3,825	1,903	1,714	3,617
X	Oroquieta Agro-Industrial School	1,352	1,128	2,480	1,284	1,105	2,389
X	Provincial Training Center - Bukidnon (Valencia)	764	1,611	2,375	620	1,366	1,986
X	Provincial Training Center - Camiguin	541	129	670	500	124	624
X	Provincial Training Center - Lanao Del Norte	731	406	1,137	724	375	1,099
X	Provincial Training Center - Misamis Occidental (Plaridel)	1,938	1,699	3,637	969	934	1,903
X	Provincial Training Center - Cagayan de Oro	359	280	639	356	272	628
X	Provincial Training Center - Misamis Oriental	516	493	1,009	543	522	1,065
X	Regional Training Center - Tagoloan	1,688	1,273	2,961	1,634	1,278	2,912
X	Regional Training Center - X (Iligan City)	814	1,147	1,961	743	940	1,683
X	Salvador Trade School	496	770	1,266	285	577	862
X, Sub-Total		15,957	14,236	30,193	13,954	12,282	26,236
XI	Carmelo de los Cientos Sr. National Trade School	923	1,191	2,114	875	1,003	1,878
XI	Provincial Training Center - IGACOS	347	526	873	363	514	877
XI	Provincial Training Center - Davao de Oro	1,664	977	2,641	1,598	914	2,512
XI	Davao National Agricultural School (DNAS)	1,977	1,653	3,630	1,859	1,522	3,381
XI	Davao Oriental Polytechnic Institute (formerly Lupon School of Fisheries)	1,853	1,780	3,633	1,112	1,038	2,150



Region	TTI	Enrolled			Graduates		
		Female	Male	Total	Female	Male	Total
XI	Provincial Training Center - Davao (Mintal)	561	839	1,400	399	595	994
XI	Provincial Training Center - Davao Del Norte	1,146	1,143	2,289	1,079	1,083	2,162
XI	Provincial Training Center - Davao del Sur (Digos City)	915	540	1,455	885	563	1,448
XI	Provincial Training Center - Malita	796	1,286	2,082	791	1,244	2,035
XI	Provincial Training Center - Mati, Davao Oriental	2,089	1,920	4,009	1,902	1,635	3,537
XI	Regional Training Center-Davao/Korea Philippines Vocational Training Center	2,695	3,272	5,967	2,072	2,417	4,489
XI	Wangan National Agricultural School	1,207	566	1,773	1,142	530	1,672
XI, Sub-Total		16,173	15,693	31,866	14,077	13,058	27,135
XII	General Santos National School of Arts and Trade (GSNSAT)	1,091	1,018	2,109	933	888	1,821
XII	Provincial Training Center - Kidapawan	515	866	1,381	501	861	1,362
XII	Provincial Training Center - Pigcawayan	1,808	2,101	3,909	1,830	1,999	3,829
XII	PTC Sultan Kudarat (PTC Lambayong)	1,306	1,961	3,267	1,326	2,134	3,460
XII	Provincial Training Center - Surallah	242	706	948	277	833	1,110
XII	Provincial Training Center - Malapatan	1,169	1,560	2,729	981	1,309	2,290
XII	TESDA SOCCSKSARGEN-Manpower Development Center (TSOX-MPDC)	688	1,460	2,148	676	1,469	2,145
XII	TESDA Training Center-General Santos City	2,458	2,913	5,371	2,356	2,705	5,061
XII, Sub-Total		9,277	12,585	21,862	8,880	12,198	21,078
CARAGA	Agusan del Sur School of Arts and Trades	524	1,842	2,366	223	658	881
CARAGA	Northern Mindanao School of Fisheries	2,194	1,420	3,614	2,164	1,338	3,502





Region	TTI	Enrolled			Graduates		
		Female	Male	Total	Female	Male	Total
CARAGA	Provincial Training Center - Agusan del Norte (Cabadbaran)	1,173	1,011	2,184	1,131	979	2,110
CARAGA	Provincial Training Center - Agusan del Sur	1,842	4,283	6,125	1,850	4,224	6,074
CARAGA	Provincial Training Center - Siargao	1,724	965	2,689	1,713	942	2,655
CARAGA	Provincial Training Center - Surigao del Norte	1,894	1,940	3,834	1,851	1,795	3,646
CARAGA	Provincial Training Center - Surigao del Sur	4,770	4,531	9,301	4,552	4,465	9,017
CARAGA	Provincial Training Center - Dinagat Islands	1,796	1,523	3,319	1,721	1,621	3,342
CARAGA	Regional Training Center - CARAGA	170	432	602	129	349	478
CARAGA	Surigao del Norte College of Agriculture and Technology	3,263	2,296	5,559	3,085	2,130	5,215
CARAGA, Sub-Total		19,350	20,243	39,593	18,419	18,501	36,920

Source: TESDA-ICTO | Data generated from T2MIS from January 1, 2023 to December 31, 2023

Note: 1. Cordillera State Institute of Technical Education (CSITE) are consist of the following branch:

TESDA CSITE - Main 1 (Formerly Regional Training Center - Baguio City)

TESDA CSITE - Main 2 (Formerly Baguio City School of Arts and Trades)

TESDA CSITE - Abra Campus (Formerly Provincial Training Center - Abra)

TESDA CSITE - Ifugao Campus (Formerly Provincial Training Center - Ifugao)

TESDA CSITE - Kalinga Campus (Formerly Provincial Training Center - Kalinga)

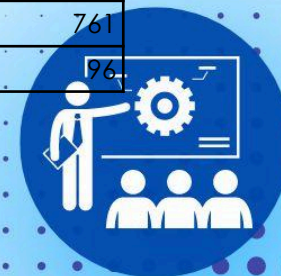
TESDA CSITE - Mt. Province Campus (Formerly Provincial Training Center - Mt. Province)

2. The output of Philippines-Korea Technological and Cooperation Center is included in the output of Human Resource Development Institute (HRDI)

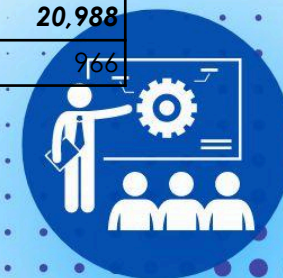


Table 12. Number of Assessed and Certified by TTI, by Region and Sex: CY 2023

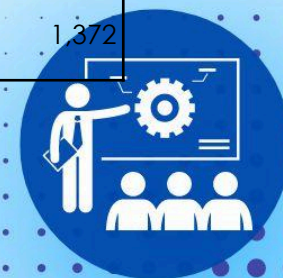
Region	TTI	Assessed			Certified		
		Female	Male	Total	Female	Male	Total
Total		111,630	136,872	248,411	101,448	126,416	227,775
NCR	TESDA Navotas Training Institute	2,927	268	3,195	2,863	256	3,119
NCR	Tesda Manila Training and Assessment Center (TMTAC)	2,740	70	2,810	2,591	53	2,644
NCR	MuntiParLasTaPat District Training and Assessment Center	208	532	740	207	506	713
NCR	Regional Training Center - NCR	76	665	741	66	627	693
NCR	Tesda Pamamarisan Training and Assessment Center (TPTAC)	41	61	102	41	60	101
NCR	Pasay-Makati District Training and Assessment Center	136	422	558	131	406	537
NCR	Quezon City Lingkod Bayan Skills Development Center	537	335	872	503	322	825
NCR	Human Resource Development Institute (HRDI)	0	0	0	0	0	0
NCR	National Language Skills Center (NLSC)	0	0	0	0	0	0
NCR	TESDA Women's Center	455	343	798	437	331	768
NCR	National TVET Trainers Academy	0	0	0	0	0	0
NCR, Sub-total		7,120	2,696	9,816	6,839	2,561	9,400
CAR	Provincial Training Center - Apayao	211	322	533	211	321	532
CAR	Provincial Training Center - Benguet	224	194	418	215	191	406
CAR	Cordillera State Institute of Technical Education (CSITE)	5,482	7,395	12,877	4,609	6,782	11,391
CAR, Sub-Total		5,917	7,911	13,828	5,035	7,294	12,329
I	Bangui Institute of Technology	264	263	527	252	255	507
I	Marcos Agro-Industrial School	336	569	905	304	457	761
I	Provincial Training Center - Banna Ilocos Norte	121	44	165	72	24	96



Region	TTI	Assessed			Certified		
		Female	Male	Total	Female	Male	Total
I	Provincial Training Center - La Union	114	326	440	112	323	435
I	Provincial Training Center - Pangasinan	122	962	1,084	111	850	961
I	Provincial Training Center - Urdaneta	38	514	552	35	465	500
I	Provincial Training Center - Candon City	132	900	1,032	120	869	989
I	Regional Training Center - La Union	740	743	1,483	660	583	1,243
I	Luciano Millan Memorial School of Arts and Trades	266	504	770	209	475	684
I	Pangasinan School of Arts and Trades	799	1,075	1,874	784	1,059	1,843
I	Pangasinan Technological Institute	621	642	1,263	583	607	1,190
I, Sub-Total		3,553	6,542	10,095	3,242	5,967	9,209
II	Aparri Polytechnic Institute	988	1,318	2,306	880	1,234	2,114
II	Provincial Training Center - Isabela	0	0	0	0	0	0
II	Isabela School of Arts & Trades	2,846	4,558	7,404	2,308	4,208	6,516
II	Lasam Institute of Technology	532	450	982	521	442	963
II	Nueva Vizcaya Polytechnic Institute	875	895	1,770	770	809	1,579
II	Provincial Training Center - Batanes	0	0	0	0	0	0
II	Provincial Training Center - Cagayan	198	266	464	195	257	452
II	Provincial Center for Skills Enhancement and Productivity (Nueva Viscaya)	111	266	377	110	266	376
II	Provincial Training Center - Quirino	244	428	672	235	415	650
II	Regional Training Center - II (Tuguegarao)	590	2,062	2,652	570	1,998	2,568
II	Southern Isabela College of Arts and Trades	2,535	3,837	6,372	2,249	3,521	5,770
II, Sub-Total		8,919	14,080	22,999	7,838	13,150	20,988
III	Concepcion Vocational School	426	551	977	420	546	966



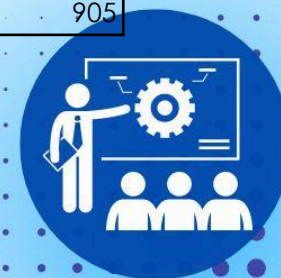
Region	TTI	Assessed			Certified		
		Female	Male	Total	Female	Male	Total
III	Gonzalo Puyat School of Arts and Trades	710	633	1,343	629	538	1,167
III	Provincial Training Center - Baler	421	401	822	380	361	741
III	Provincial Training Center - Guagua	565	514	1,079	539	490	1,029
III	Provincial Training Center - Iba	173	1,110	1,283	168	1,039	1,207
III	Provincial Training Center - Nueva Ecija (Palayan City)	36	639	675	33	609	642
III	Provincial Training Center - Bataan (Orion)	135	418	553	133	409	542
III	Provincial Training Center - Calumpit	616	468	1,084	605	464	1,069
III	Provincial Training Center - Tarlac	255	1,048	1,303	248	999	1,247
III	Regional Training Center Central Luzon - Mariveles	86	492	578	74	401	475
III	Regional Training Center Central Luzon - Guiguinto	702	1,635	2,337	696	1,520	2,216
III	TESDA Korea-Philippines Information Technology Center	693	442	1,135	648	408	1,056
III, Sub-Total		4,818	8,351	13,169	4,573	7,784	12,357
IV-A	Bondoc Peninsula Technological Institute	248	360	608	236	333	569
IV-A	Jacobo Z. Gonzales Memorial School of Arts and Trades	12,762	2,828	15,590	11,626	2,698	14,324
IV-A	Provincial Technical Education and Skills Development Center (PTESDC) - Taytay	134	569	703	121	545	666
IV-A	Provincial Training Center - Lipa	12	17	29	11	17	28
IV-A	Quezon National Agricultural School	930	1,092	2,022	884	1,013	1,897
IV-A	Regional Training Center - CALABARZON	2,808	1,811	4,619	2,763	1,723	4,486
IV-A	Rizal Provincial Technical Education and Skills Development Center - Binangonan	806	662	1,468	757	615	1,372



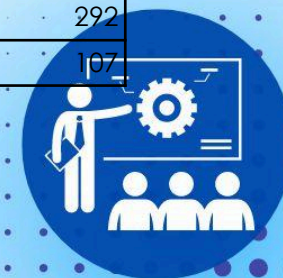
TRAINING OUTPUT



Region	TTI	Assessed			Certified		
		Female	Male	Total	Female	Male	Total
IV-A	Rizal Provincial Technical Education and Skills Development Center - Cainta	132	748	880	120	651	771
IV-A	Provincial Training Center - Paliparan	238	905	1,143	212	837	1,049
IV-A	Provincial Training Center - Rosario	172	1,006	1,178	162	926	1,088
IV-A	Provincial Training Center - San Antonio	97	296	393	92	291	383
IV-A	TESDA-Laguna Lake Development Authority Provincial Training Center	4,675	1,134	5,809	4,450	1,078	5,528
IV-A, Sub-Total		23,014	11,428	34,442	21,434	10,727	32,161
IV-B	Buyabod School of Arts and Trades	580	1,176	1,756	575	1,159	1,734
IV-B	Provincial Training Center - San Teodoro	844	1,191	2,035	805	1,146	1,951
IV-B	Provincial Training Center - Boac	0	0	0	0	0	0
IV-B	Provincial Training Center - Palawan	69	289	358	69	288	357
IV-B	Provincial Training Center - Romblon	357	292	649	357	291	648
IV-B	Puerto Princesa School of Arts & Trades	1,206	1,971	3,177	1,059	1,882	2,941
IV-B	Rizal Occidental Mindoro TESDA Training and Accreditation Center	581	597	1,178	568	572	1,140
IV-B	Romblon National Institute of Technology	485	670	1,155	478	655	1,133
IV-B	Simeon Suan Vocational Technical College	1,190	1,605	2,795	1,138	1,570	2,708
IV-B	Provincial Training Center - Occidental Mindoro	119	249	368	112	247	359
IV-B	Torrijos Poblacion School of Arts and Trades	326	317	643	301	301	602
IV-B, Sub-Total		5,757	8,357	14,114	5,462	8,111	13,573
V	Bulusan National Vocational Technical School	455	679	1,134	365	540	905

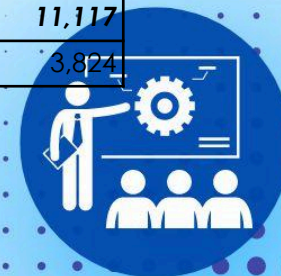


Region	TTI	Assessed			Certified		
		Female	Male	Total	Female	Male	Total
V	Cabugao School of Handicraft and Cottage Industries (CSHCI)	426	581	1,007	404	552	956
V	Camarines Sur Institute of Fisheries and Marine Sciences	1,280	1,606	2,886	975	1,313	2,288
V	Provincial Training Center - Libmanan	92	223	315	85	193	278
V	Masbate Institute of Fisheries and Technology	868	612	1,480	717	500	1,217
	Provincial Training Center - Catanduanes	75	16		73	16	
V	Provincial Training Center - Guinobatan	35	483	518	33	435	468
V	Provincial Training Center - Albay (Malilipot)	150	729	879	130	674	804
V	Provincial Training Center - Labo	405	391	796	375	324	699
V	Provincial Training Center - Masbate	486	228	714	414	210	624
V	Provincial Training Center - Sorsogon	163	191	354	150	175	325
V	Ragay Polytechnic Skills Institute	385	199	584	284	161	445
V	Regional Training Center - V (Pili)	332	1,603	1,935	320	1,478	1,798
V	San Francisco Institute of Science and Technology	1,783	1,604	3,387	1,505	1,349	2,854
V	Sorsogon National Agricultural School (SNAS)	768	812	1,580	667	697	1,364
V, Sub-Total		7,703	9,957	17,569	6,497	8,617	15,025
VI	Dumalag Vocational Technical School	848	1,094	1,942	827	1,024	1,851
VI	Leon Ganson Polytechnic College	761	750	1,511	639	607	1,246
VI	New Lucena Polytechnic College	2,071	750	2,821	1,833	689	2,522
VI	Passi Trade School	591	1,060	1,651	585	1,023	1,608
VI	Provincial Training Center - Cadiz	256	1,391	1,647	240	986	1,226
VI	Provincial Training Center - Capiz	34	281	315	25	267	292
VI	Provincial Training Center - Guimaras	37	91	128	34	73	107

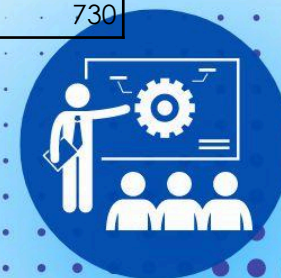




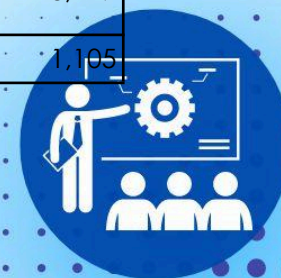
Region	TTI	Assessed			Certified		
		Female	Male	Total	Female	Male	Total
VI	Provincial Training Center - Iloilo	1,527	1,509	3,036	1,316	1,451	2,767
VI	Provincial Training Center - Kabankalan	276	1,656	1,932	250	1,368	1,618
VI	Provincial Training Center - Antique (Hamtic)	106	1,104	1,210	95	998	1,093
VI	Provincial Training Center - Aklan (Numancia)	304	836	1,140	241	763	1,004
VI	Regional Training Center - Talisay	1,105	1,676	2,781	983	1,483	2,466
VI	Regional Training Center - Iloilo	137	1,446	1,583	124	1,288	1,412
VI, Sub-Total		8,053	13,644	21,697	7,192	12,020	19,212
VII	Lazi Technical Institute (LTI)	635	606	1,241	608	586	1,194
VII	Provincial Training Center - Cebu (Carmen)	215	278	493	206	273	479
VII	Provincial Training Center - Cebu (Daanbantayan)	162	358	520	160	351	511
VII	Provincial Training Center - Cebu (Minglanilla)	535	951	1,486	501	922	1,423
VII	Provincial Training Center - Cebu (Samboan)	119	469	588	117	453	570
VII	Provincial Training Center - Siquijor	57	74	131	57	74	131
VII	Provincial Training Center - Cebu (Toledo)	252	720	972	250	695	945
VII	Provincial Training Center - Dumaguete	297	465	762	256	429	685
VII	Provincial Training Center - (Bilar)	191	635	826	167	617	784
VII	Provincial Training Center - (Inabanga)	45	570	615	45	558	603
VII	Provincial Training Center - (Jagna)	205	413	618	175	407	582
VII	Provincial Training Center - (Pilar)	329	776	1,105	326	771	1,097
VII	Provincial Training Center - (Tubigon)	412	375	787	396	371	767
VII	Regional Training Center - VII (Cebu)	346	1,184	1,530	268	1,078	1,346
VII, Sub-Total		3,800	7,874	11,674	3,532	7,585	11,117
VIII	Arteche National Agricultural School (ANAS)	2,175	1,837	4,012	2,102	1,722	3,824



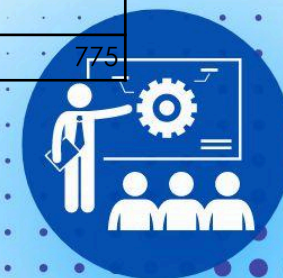
Region	TTI	Assessed			Certified		
		Female	Male	Total	Female	Male	Total
VIII	Balangiga National Agricultural School (BNAS)	748	992	1,740	717	952	1,669
VIII	Balicutro College of Arts and Trades	1,201	1,019	2,220	1,054	960	2,014
VIII	Cabucgayan National School of Arts and Trades (CNSAT)	750	966	1,716	714	929	1,643
VIII	Calubian National Vocational School (CNVS)	505	441	946	502	437	939
VIII	Las Navas Agro-Industrial School	1,007	539	1,546	947	501	1,448
VIII	Provincial Training Center - Biliran	121	287	408	117	282	399
VIII	Provincial Training Center - Northern Samar (Catarman)	461	725	1,186	445	706	1,151
VIII	Provincial Training Center - Eastern Samar	0	0	0	0	0	0
VIII	Provincial Training Center - Leyte	109	176	285	109	175	284
VIII	Provincial Training Center - Southern Leyte	142	109	251	142	109	251
VIII	Provincial Training Center - Samar	272	1,896	2,168	265	1,854	2,119
VIII	Regional Training Center - Tacloban	1,258	2,064	3,322	1,152	1,924	3,076
VIII	Samar National School of Arts & Trades (SNSAT)	0	0	0	0	0	0
VIII, Sub-Total		8,749	11,051	19,800	8,266	10,551	18,817
IX	Dipolog School of Fisheries	1,063	1,163	2,226	963	1,053	2,016
IX	Provincial Training Center - Pagadian	679	1,588	2,267	657	1,544	2,201
IX	Provincial Training Center - Sindangan	273	1,267	1,540	248	1,198	1,446
IX	Provincial Training Center - Zamboanga City	0	0	0	0	0	0
IX	Provincial Training Center - Zamboanga Sibugay	0	0	0	0	0	0
IX	Regional Training Center -Zamboanga Peninsula	157	661	818	136	594	730



Region	TTI	Assessed			Certified		
		Female	Male	Total	Female	Male	Total
IX	Zamboanga Sibugay Polytechnic Institute (Formerly Kabasalan Institute of Technology)	0	0	0	0	0	0
IX, Sub-Total		2,172	4,679	6,851	2,004	4,389	6,393
X	Cagayan de Oro Bugo School of Arts and Trades	961	1,372	2,333	797	1,165	1,962
X	Camiguin School of Arts and Trades	253	157	410	210	138	348
X	Kinoguitan National Agricultural School	401	522	923	387	494	881
X	Lanao Norte National Agro-Industrial School	1,043	1,206	2,249	971	1,122	2,093
X	Oroquieta Agro-Industrial School	588	1,178	1,766	577	1,137	1,714
X	Provincial Training Center - Lanao Del Norte	94	83	177	82	77	159
X	Provincial Training Center - Misamis Oriental	189	341	530	187	337	524
X	Provincial Training Center - Bukidnon (Valencia)	2,572	2,857	5,429	2,317	2,628	4,945
X	Provincial Training Center - Misamis Occidental (Plaridel)	136	547	683	132	540	672
X	Regional Training Center - X (Iligan City)	1,054	1,648	2,702	946	1,490	2,436
X	Regional Training Center - Tagoloan	642	1,609	2,251	568	1,490	2,058
X	Salvador Trade School	403	812	1,215	312	740	1,052
X	Provincial Training Center - Camiguin	58	9	67	53	9	62
X, Sub-Total		8,394	12,341	20,735	7,539	11,367	18,906
XI	Carmelo de los Cientos Sr. National Trade School	323	940	1,263	247	730	977
XI	Davao National Agricultural School (DNAS)	1,019	970	1,989	893	878	1,771
XI	Davao Oriental Polytechnic Institute (formerly Lupon School of Fisheries)	2,834	921	3,755	2,379	838	3,217
XI	Provincial Training Center - Davao Del Norte	749	445	1,194	682	423	1,105



Region	TTI	Assessed			Certified		
		Female	Male	Total	Female	Male	Total
XI	Provincial Training Center - Malita	66	80	146	39	70	109
XI	Provincial Training Center - Davao (Mintal)	181	552	733	176	495	671
XI	Provincial Training Center - Davao de Oro	85	262	347	70	257	327
XI	Provincial Training Center - Davao Oriental	480	1,043	1,523	453	1,018	1,471
XI	Regional Training Center-Davao/Korea Philippines Vocational Training Center	1,877	2,785	4,662	1,589	2,356	3,945
XI	Wangan National Agricultural School	922	596	1,518	860	560	1,420
XI, Sub-Total		8,536	8,594	17,130	7,388	7,625	15,013
XII	General Santos National School of Arts and Trade (GSNSAT)	743	716	1,459	608	662	1,270
XII	PTC Sultan Kudarat (PTC Lambayong)	207	786	993	205	775	980
XII	Provincial Training Center - Malapatan	578	646	1,224	559	621	1,180
XII	Provincial Training Center - Pigcawayan	198	350	548	160	286	446
XII	Provincial Training Center - Surallah	17	33	50	17	33	50
XII	TESDA SOCCSKSARGEN-Manpower Development Center (TSOX-MPDC)	131	432	563	118	385	503
XII	TESDA Training Center-General Santos City	867	918	1,785	814	899	1,713
XII, Sub-Total		2,741	3,881	6,622	2,481	3,661	6,142
CARAGA	Agusan del Sur School of Arts and Trades	332	1,164	1,496	270	1,085	1,355
CARAGA	Northern Mindanao School of Fisheries	495	892	1,387	397	803	1,200
CARAGA	Provincial Training Center - Agusan del Norte (Cabadbaran)	138	371	509	123	351	474
CARAGA	Provincial Training Center - Agusan del Sur	74	745	819	67	708	775



Region	TTI	Assessed			Certified		
		Female	Male	Total	Female	Male	Total
CARAGA	Provincial Training Center - Dinagat Islands	104	393	497	93	370	463
CARAGA	Provincial Training Center - Siargao	121	129	250	105	102	207
CARAGA	Provincial Training Center - Surigao del Norte	109	713	822	90	590	680
CARAGA	Surigao del Norte College of Agriculture and Technology	804	822	1,626	785	770	1,555
CARAGA	Provincial Training Center - Surigao del Sur	207	257	464	196	228	424
CARAGA, Sub-Total		2,384	5,486	7,870	2,126	5,007	7,133

Source: TESDA-ICTO | Data generated from T2MIS, as of December 2023

Note: 1. Cordillera State Institute of Technical Education (CSITE) are consist of the following branch:

TESDA CSITE - Main 1 (Formerly Regional Training Center - Baguio City)

TESDA CSITE - Main 2 (Formerly Baguio City School of Arts and Trades)

TESDA CSITE - Abra Campus (Formerly Provincial Training Center - Abra)

TESDA CSITE - Ifugao Campus (Formerly Provincial Training Center - Ifugao)

TESDA CSITE - Kalinga Campus (Formerly Provincial Training Center - Kalinga)

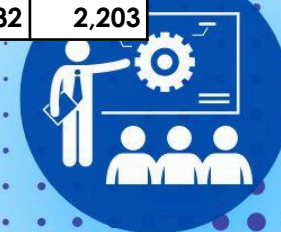
TESDA CSITE - Mt. Province Campus (Formerly Provincial Training Center - Mt. Province)

2. The output of Philippines-Korea Technological and Cooperation Center is included in the output of Human Resource Development Institute (HRDI)



Table 13. Number of Enrolled, Graduates, Assessed, Certified by Client Type and Sex: CY 2023

Client Type	Enrolled			Graduates			Assessed			Certified		
	Female	Male	Total	Female	Male	Total	Female	Male	Total	Female	Male	Total
4Ps Beneficiary	63,090	27,213	90,303	58,395	24,706	83,101	5,801	4,028	9,829	5,484	3,828	9,312
Agrarian Reform Beneficiary	7,524	6,859	14,383	7,510	6,765	14,275	704	715	1,419	672	680	1,352
Balik Probinsya	1,876	1,999	3,875	1,836	1,907	3,743	381	442	823	359	423	782
Cooperatives	0	0	0	0	0	0	1	0	1	1	0	1
Currently Employed Workers	1	0	1	1		1	3	3	6	3	3	6
Displaced Workers	67,541	60,309	127,850	59,312	54,520	113,832	11,961	13,739	25,700	11,402	13,319	24,721
Drug dependents surrenderers/surrenderers	2,676	9,373	12,049	2,540	8,543	11,083	157	648	805	151	595	746
Employees with Contractual/Job-Order Status	0	0	0	0	0	0	0	2	2	0	2	2
Family Members of AFP & PNP Killed-in-Action	560	412	972	548	394	942	43	57	100	39	54	93
Family Members of AFP & PNP Wounded-in-Action	693	706	1,399	646	637	1,283	89	117	206	75	113	188
Family Members of Farmers and Fishermen	1	0	1	1		1	16	11	27	16	11	27
Farmers and Fishermen	191,310	168,839	360,149	178,596	158,387	336,983	23,171	25,494	48,665	22,221	24,410	46,631
Indigenous People & Cultural Communities	83,607	69,407	153,014	77,987	64,545	142,532	11,333	10,404	21,737	10,691	9,855	20,546
Industry Workers	28,981	37,411	66,392	25,997	29,887	55,884	3,539	4,890	8,429	3,287	4,597	7,884
Informal Workers	0	1	1	0	1	1	3	1	4	3	1	4
Inmates and Detainees	6,251	19,084	25,335	5,881	16,304	22,185	495	2,498	2,993	492	2,481	2,973
MILF Beneficiary	1,030	1,896	2,926	1,148	1,898	3,046	881	1,716	2,597	812	1,619	2,431
OFW Dependent	8,302	4,972	13,274	7,995	4,440	12,435	1,196	1,118	2,314	1,121	1,082	2,203



TRAINING OUTPUT



Client Type	Enrolled			Graduates			Assessed			Certified		
	Female	Male	Total	Female	Male	Total	Female	Male	Total	Female	Male	Total
OSY	32,584	56,782	89,366	29,069	50,416	79,485	7,438	14,163	21,601	6,822	13,300	20,122
Others	136,126	79,729	215,855	119,496	66,880	186,376	19,062	18,290	37,352	17,895	17,470	35,365
RCEF-RESP	37,815	30,222	68,037	38,702	30,848	69,550	1,335	1,662	2,997	1,268	1,609	2,877
Rebel Returnees/Decommissioned Combatants	2,250	4,566	6,816	2,177	4,766	6,943	772	1,975	2,747	747	1,893	2,640
Returning/Repatriated OFWs	5,371	3,629	9,000	5,094	3,257	8,351	1,253	1,306	2,559	1,184	1,270	2,454
Senior Citizens	0	0	0	0	0	0	1	0	1	1	0	1
Solo Parent	3	0	3	3	0	3	3	0	3	3	0	3
Student	236,361	248,077	484,438	188,370	195,717	384,087	28,344	33,236	61,580	26,569	31,419	57,988
TESDA Alumni	32,374	34,099	66,473	29,493	31,016	60,509	5,433	7,194	12,627	4,960	6,780	11,740
TVET Trainers	6,205	7,723	13,928	5,435	6,904	12,339	432	832	1,264	360	776	1,136
Uniformed Personnel	5,629	13,960	19,589	5,306	12,835	18,141	255	1,235	1,490	249	1,222	1,471
Victim of Natural Disasters and Calamities	24,653	21,937	46,590	23,758	20,649	44,407	3,740	4,514	8,254	3,475	4,309	7,784
Wounded-in-Action AFP & PNP Personnel	119	362	481	110	353	463	3	25	28	3	25	28

Source: TESDA-ICTO | Data generated from T2MIS from January 1, 2023 to December 31, 2023



Table 14. Number of Enrolled, Graduates, Assessed and Certified by TVET Scholarship Program, by Sex
(Continuing Appropriations 2022)

Scholarship Type	Enrolled			Graduates			Assessed			Certified		
	Female	Male	Total	Female	Male	Total	Female	Male	Total	Female	Male	Total
TWSP	989	956	1,945	830	777	1,607	500	499	999	443	454	897
STEP	3,055	3,244	6,299	2,710	2,692	5,402	1,674	1,674	3,348	1,602	1,555	3,157
TTSP	389	377	766	314	298	612	138	174	312	136	164	300
UAQTEA	929	1,081	2,010	498	531	1,029	75	49	124	73	51	124
Total	5,362	5,658	11,020	4,352	4,298	8,650	2,387	2,396	4,783	2,254	2,224	4,478

Source: ROMO-SMD | Data as of December 31, 2023

Legend:

TWSP - Training for Work Scholarship Program

PESFA - Private Education Student Financial Assistance

STEP - Special Training for Employment Program

UAQTEA- Universal Access to Quality Tertiary Education

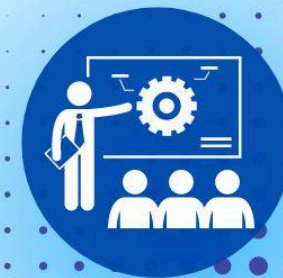


Table 15. Number of Enrolled, Graduates, Assessed and Certified by TVET Scholarship Program, by Sex: CY 2023

Scholarship Type	Enrolled			Graduates			Assessed			Certified		
	Female	Male	Total	Female	Male	Total	Female	Male	Total	Female	Male	Total
TWSP	86,378	88,218	174,596	68,237	70,137	138,374	31,819	41,211	73,030	29,760	39,427	69,187
PESFA	4,559	4,776	9,335	4,236	4,426	8,662	3,216	3,418	6,634	2,932	3,178	6,110
STEP	49,710	58,451	108,161	39,567	43,916	83,483	18,857	22,646	41,503	18,192	21,781	39,973
UAQTEA	29,131	30,335	59,466	15,971	15,553	31,524	420	276	696	350	241	591
TTSP	20,157	24,935	45,092	13,911	18,491	32,402	7,480	11,453	18,933	7,072	10,977	18,049
RESP	35,150	27,153	62,303	32,871	25,280	58,151	2,020	2,360	4,380	1,963	2,290	4,253
CFSP	5,413	3,614	9,027	4,928	3,193	8,121	3,222	1,981	5,203	3,187	1,964	5,151
Total	230,498	237,482	467,980	179,721	180,996	360,717	67,034	83,345	150,379	63,456	79,858	143,314

Source: ROMO-SMD | Data as of December 31, 2023

Legend:

TWSP - Training for Work Scholarship Program

PESFA - Private Education Student Financial Assistance

STEP - Special Training for Employment Program

UAQTEA- Universal Access to Quality Tertiary Education

TTSP - Tulong Trabaho Scholarship Program

RESP - Rice Extension Services Program

CFSP - Coconut Farmers Scholarship Program



Table 16. Number of Enrolled, Graduates, Assessed and Certified by TVET Scholarship Program, by Region
(Continuing Appropriations 2022)

Region	TWSP				STEP				UAQTEA				TTSP			
	E	G	A	C	E	G	A	C	E	G	A	C	E	G	A	C
NCR	325	302			186	174	128	126					390	341	226	226
CAR					514	312	115	115	75							
I	43	36	34	34	224	224	181	181	158	158	124	124				
II	25	25							114	62			24	24	24	24
III	30	30			483	238	85	84	424	159			25	25		
IV-A	778	673	548	497	2,757	2,451	1,380	1,336	122	81			179	138	47	35
IV-B					100	100	70	70								
V					1,419	1,392	989	857								
VI					18	18	18	18	288	181						
VII					25	25	22	22								
VIII	37	37	34	34	92	50	50	50	144	23						
IX	326	223	135	95	331	268	170	159	220	47			41	24		
X	79	77	73	73	125	125	118	117	75				25	25		
XI									225	175			18	16	15	15
XII	176	83	77	73					165	143			64	19		
CARAGA	111	106	83	78	25	25	22	22								
BARMM	15	15	15	13												
Total	1,945	1,607	999	897	6,299	5,402	3,348	3,157	2,010	1,029	124	124	766	612	312	300

Source: ROMO-SMD | Data as of December 31, 2023

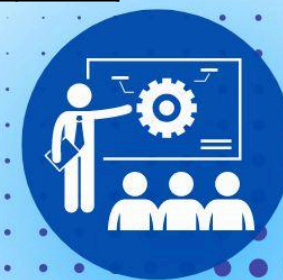


Table 17. Number of Enrolled, Graduates, Assessed and Certified by TVET Scholarship Program, by Region: CY 2023

Region	TWSP				PESFA				STEP			
	E	G	A	C	E	G	A	C	E	G	A	C
NCR	22,647	16,568	7,372	7,195	173	158	107	90	8,617	5,943	3,462	3,447
CAR	4,419	3,719	2,773	2,640	149	147	143	136	1,954	1,839	1,463	1,412
I	10,913	7,654	5,288	5,011	430	409	314	286	6,237	4,949	2,387	2,338
II	4,305	3,993	3,335	3,186	357	351	287	269	6,481	5,795	4,373	4,237
III	23,387	16,719	7,127	6,774	547	466	258	233	17,186	11,492	4,766	4,550
IV-A	20,946	18,282	10,229	9,825	566	553	458	446	7,991	6,312	3,595	3,498
IV-B	6,067	5,582	4,295	4,115	442	440	397	377	3,321	3,230	2,649	2,574
V	13,208	10,836	4,644	3,870	1,109	1,041	649	545	11,847	8,833	2,868	2,567
VI	11,265	9,813	3,666	3,445	953	949	698	618	7,702	5,763	3,220	3,047
VII	12,399	8,085	4,407	4,212	904	676	517	488	5,379	3,122	1,904	1,858
VIII	12,054	9,177	4,531	4,472	741	738	684	683	8,243	6,378	3,769	3,733
IX	3,827	3,528	2,686	2,496	544	540	423	368	2,282	1,983	1,364	1,319
X	11,524	9,203	3,021	2,831	622	620	371	354	6,454	5,474	1,084	1,043
XI	7,368	6,539	3,037	2,823	520	510	388	351	7,025	5,780	1,235	1,144
XII	7,210	6,314	5,049	4,830	778	755	676	646	3,581	3,372	2,346	2,278
CARAGA	2,982	2,287	1,570	1,462	362	309	264	220	3,451	3,043	945	855
BARMM	75	75			138				410	175	73	73
Total	174,596	138,374	73,030	69,187	9,335	8,662	6,634	6,110	108,161	83,483	41,503	39,973



Region	UAQTEA				TTSP				RESP				CFSP			
	E	G	A	C	E	G	A	C	E	G	A	C	E	G	A	C
NCR	1,216	391			2,411	982	484	474								
CAR	1,848	679	4	4	2,632	2,250	1,397	1,343	2,375	2,335	118	109				
I	2,062	686	136	86	4,424	3,888	2,773	2,612	2,550	2,521	406	388	72	69	68	68
II	1,798	879	10	10	2,647	2,283	1,880	1,802	5,809	4,894	685	664	38	37	35	35
III	8,262	3,026	50	50	6,269	3,402	1,564	1,491	8,736	7,148	413	405	144	120	10	7
IVA	3,259	1,457	23	23	4,501	3,562	2,290	2,226	3,472	3,356	749	737	633	630	445	444
IVB	572	341	92	91	2,030	1,976	1,262	1,221	3,149	3,121	118	118	342	323	222	216
V	1,658	638	84	73	1,891	1,678	795	736	3,321	3,134	219	199	502	502	114	103
VI	5,235	3,918	89	86	2,722	2,019	1,269	1,204	5,570	5,322	129	111	493	292	62	62
VII	9,368	6,955	46	46	2,609	1,232	477	469	2,550	2,507	121	121	522	516	466	466
VIII	7,894	3,945			1,825	1,710	1,434	1,390	5,189	4,914	401	396	1,874	1,604	1,452	1,448
IX	2,418	1,846	19	1	1,606	1,208	770	726	2,738	2,413			1,180	1,171	433	433
X	380	36			5,063	3,550	1,477	1,346	5,375	5,297	143	141	1,649	1,647	1,062	1,059
XI	5,793	4,620	90	82	2,554	1,777	597	571	2,750	2,630	111	100	336	280	146	132
XII	1,401	300			1,235	502	279	263	3,969	3,946	767	764	625	550	444	438
CARAGA	6,302	1,807	53	39	598	308	185	175	3,575	3,438			404	334	244	240
BARMM					75	75			1,175	1,175			213	46		
Total	59,466	31,524	696	591	45,092	32,402	18,933	18,049	62,303	58,151	4,380	4,253	9,027	8,121	5,203	5,151

Source: ROMO-SMD | Data as of December 31, 2023



Table 18. Number of Enrolled, Graduates, Assessed and Certified by TVET Scholarship Program, by Sector
(Continuing Appropriations 2022)

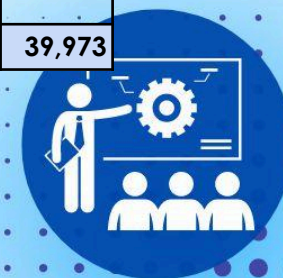
Sector	TWSP				STEP				UAQTEA				TTSP			
	E	G	A	C	E	G	A	C	E	G	A	C	E	G	A	C
Agriculture, Forestry, and Fishery	165	117	65	58	2,017	1,815	1,043	1,007	138	46			20			
Automotive and Land Transportation	228	206	171	142	127	125	98	96	52	60			82	58	56	56
Construction	434	311	199	194	735	502	221	220	24				115	101	28	25
Electrical and Electronics	44	42	22	22	821	678	470	394	137	97			57	35	35	26
Garments and Textiles	20	18	18	16	50	47	46	46								
Social and Other Community Development Services	50	48	42	42					25	25						
Human Health / Health Care	123	123	110	110	119	97							95	69	17	17
Information and Communication Technology	434	386	40						112	48			25	25		
Metals and Engineering	65	25	25	25	519	408	346	311	72	45			49	51	24	24
Processed Food and Beverages	18	18	18	18												
Tourism (Hotel and Restaurant)	364	313	289	270	1,911	1,730	1,124	1,083	1,450	708	124	124	323	273	152	152
Total	1,945	1,607	999	897	6,299	5,402	3,348	3,157	2,010	1,029	124	124	766	612	312	300

Source: ROMO-SMD | Data as of December 31, 2023



Table 19. Number of Enrolled, Graduates, Assessed and Certified by TVET Scholarship Program, by Sector: CY 2023

Sector	TWSP				PESFA				STEP			
	E	G	A	C	E	G	A	C	E	G	A	C
Agriculture, Forestry, and Fishery	18,712	16,226	9,237	8,963	1,185	1,064	789	782	20,100	18,410	6,873	6,705
Automotive and Land Transportation	13,906	11,954	8,265	7,923	1,206	1,136	959	902	14,734	11,115	6,649	6,353
Construction	16,500	13,404	8,967	8,822	549	492	345	339	10,856	7,681	4,334	4,280
Electrical and Electronics	18,671	14,238	9,113	8,129	934	853	725	627	11,004	8,109	4,116	3,820
Furniture and Fixtures	34	15										
Garments and Textiles	2,103	1,367	1,021	936	180	180	152	115	4,639	2,894	1,449	1,272
Heating, Ventilation, Airconditioning and Refrigeration	363	347	242	225								
Human Health / Health Care	9,719	6,898	3,891	3,808	723	665	432	402				
Information and Communication Technology	23,089	18,122	406	306	306	278	35	26	932	273	72	65
Language and Culture	1,484	1,128										
Maritime	644	550	393	385	93	92	91	91				
Metals and Engineering	17,088	13,566	9,630	9,303	733	687	603	565	16,550	12,046	6,143	5,860
Processed Food and Beverages	1,139	833	560	550					1,544	1,115	427	426
Social, Community Development and Other Services	4,951	3,659	1,926	1,273	746	652	414	256				
Tourism (Hotel and Restaurant)	43,138	33,888	19,057	18,273	2,680	2,563	2,089	2,005	27,802	21,840	11,440	11,192
TVET	2,900	2,039	297	266								
Utilities												
Visual Arts	15											
Wholesale and Retail Trading	140	140	25	25								
Total	174,596	138,374	73,030	69,187	9,335	8,662	6,634	6,110	108,161	83,483	41,503	39,973



Sector	UAQTEA				TTSP				RESP				CFSP			
	E	G	A	C	E	G	A	C	E	G	A	C	E	G	A	C
Agriculture, Forestry, and Fishery	4,819	2,635	50	50	6,672	5,851	3,365	3,308	61,628	57,554	4,070	3,965	9,027	8,121	5,203	5,151
Automotive and Land Transportation	1,034	708			3,645	3,075	2,107	2,009	675	597	310	288				
Construction	2,271	1,761			4,852	4,110	2,367	2,295								
Electrical and Electronics	4,830	1,842			5,191	3,526	2,186	1,990								
Furniture and Fixtures	25															
Garments and Textiles	160	138			781	547	256	233								
Heating, Ventilation, Airconditioning and Refrigeration	299	200			65	20										
Human Health / Health Care	2,100	1,273	12	12	1,700	898	610	589								
Information and Communication Technology	11,684	6,419	55	23	2,052	516	24	17								
Language and Culture					300	226										
Maritime	25	25			70	45	20	20								
Metals and Engineering	2,117	1,028	44	44	6,848	5,083	3,649	3,520								
Processed Food and Beverages					436	287	203	200								
Social, Community Development and Other Services	3,981	1,276	23	23	1,038	521	322	179								
Tourism (Hotel and Restaurant)	26,071	14,169	512	439	10,493	7,237	3,776	3,656								
TVET	50	50			826	435	23	8								
Utilities																
Visual Arts																
Wholesale and Retail Trading					123	25	25	25								
Total	59,466	31,524	696	591	45,092	32,402	18,933	18,049	62,303	58,151	4,380	4,253	9,027	8,121	5,203	5,151

Source: ROMO-SMD | Data as of December 31, 2023





Table 20. Number of Accredited Assessment Centers and Competency Assessors by Region: CY 2023

Region	No. of Accredited Assessment Centers	No. of Accredited Competency Assessors
NCR	1,125	1,677
CAR	325	830
I	577	712
II	349	623
III	1,055	1,326
IV-A	1,005	1,425
IV-B	377	690
V	411	584
VI	366	720
VII	668	983
VIII	489	1,068
IX	310	590
X	420	721
XI	606	919
XII	513	833
CARAGA	297	317
BARMM	180	273
CO	8	161
Total	9,081	14,452

Source: TESDA-CO | Data as of December 31, 2023

Note: AC and CA are counted by qualification

Table 21. Number of Competency Assessors (Warm Body) by Region: CY 2023

Region	No. of Accredited Assessment Center (Institution)	No. of Accredited Competency Assessors (Warm Body)
NCR	279	833
CAR	61	366
I	117	368
II	61	335
III	232	671
IV-A	219	809
IV-B	71	365
V	105	352
VI	74	371
VII	119	510
VIII	96	631
IX	82	348
X	80	398
XI	117	504
XII	107	410
CARAGA	70	180
BARMM	45	165
CO	2	83
Total	1,937	7,699

Source: TESDA-CO | Data as of December 31, 2023



Table 22. Number of Assessment Centers and Competency Assessors by Sector: CY 2023

Sector	Assessment Centers	Competency Assessors
Agriculture, Forestry and Fishery	874	1,630
Automotive and Land Transportation	837	1,621
Chemicals / Plastics / Petrochemicals	0	0
Construction	1,269	1,919
Creative Sector	0	3
Decorative Crafts	0	0
Electrical and Electronics	815	1,442
Footwear and Leathergoods	0	0
Furniture and Fixtures	2	2
Garments	159	284
Heating, Ventilation, Airconditioning and Refrigeration	81	144
Human Health / Health Care	554	896
Information and Communication Technology	164	114
Logistics	3	4
Maritime	62	93
Metals and Engineering	998	1,438
Processed Food & Beverages	85	195
Pyrotechnics	0	0
Social, Community Development and Other Services	571	972
Tourism (Hotel and Restaurant)	2,406	3,534
TVET	169	102
Utilities (Water Supply, Sewerage, Waste Management, etc)	13	30
Visual Arts	6	8
Wholesale and Retail Trading	13	21
Total	9,081	14,452

Source: TESDA-CO | Data as of December 31, 2023





PROGRAM REGISTRATION

Table 23. Number of Registered Programs and TVET Provider by Region: CY 2023

Region	Registered Program	Percentage Distribution	TVET Provider	Percentage Distribution
NCR	1,632	9.26%	531	11.71%
CAR	485	2.75%	118	2.60%
I	1,062	6.02%	262	5.78%
II	636	3.61%	181	3.99%
III	1,952	11.07%	491	10.82%
IV-A	1,669	9.47%	542	11.95%
IV-B	822	4.66%	188	4.14%
V	970	5.50%	255	5.62%
VI	840	4.76%	217	4.78%
VII	1,152	6.53%	281	6.19%
VIII	948	5.38%	208	4.59%
IX	724	4.11%	172	3.79%
X	1,487	8.43%	304	6.70%
XI	1,152	6.53%	258	5.69%
XII	889	5.04%	188	4.14%
CARAGA	569	3.23%	148	3.26%
BARMM	637	3.61%	190	4.19%
Overseas	3	0.02%	2	0.04%
Total	17,629	100.00%	4,536	100.00%

Source: TESDA-CO | Data as of December 31, 2023

Note: The TVET provider were counted based on the actual established centers and individual addresses



Table 24. Number of Registered Programs and TVET Provider by Region and Province: CY 2023

Region	Province	Registered Programs	TVET Provider
NCR	CAMANAVA	299	71
NCR	City of Manila	205	79
NCR	MUNTIPARLASTAPAT	320	93
NCR	PAMAMARISAN	337	101
NCR	PASMAK	219	80
NCR	Quezon City	252	107
NCR, Sub-Total		1,632	531
CAR	Abra	42	4
CAR	Apayao	29	10
CAR	Benguet	272	56
CAR	Ifugao	53	20
CAR	Kalinga	57	20
CAR	Mountain Province	32	8
CAR, Sub-total		485	118
I	Ilocos Norte	144	25
I	Ilocos Sur	123	32
I	La Union	159	34
I	Pangasinan	636	171
I, Sub-total		1,062	262
II	Batanes	9	4
II	Cagayan	207	51
II	Isabela	316	87



PROGRAM REGISTRATION



Region	Province	Registered Programs	TVET Provider
II	Nueva Vizcaya	63	21
II	Quirino	41	18
II, Sub-total		636	181
III	Aurora	79	16
III	Bataan	197	37
III	Bulacan	444	122
III	Nueva Ecija	488	119
III	Pampanga	312	97
III	Tarlac	287	62
III	Zambales	145	38
III, Sub-total		1,952	491
IV-A	Batangas	259	75
IV-A	Cavite	289	119
IV-A	Laguna	512	160
IV-A	Quezon	313	95
IV-A	Rizal	296	93
IV-A, Sub-total		1,669	542
IV-B	Marinduque	98	14
IV-B	Occidental Mindoro	86	19
IV-B	Oriental Mindoro	408	108
IV-B	Palawan	154	31
IV-B	Romblon	76	16



Region	Province	Registered Programs	TVET Provider
IV-B, Sub-total		822	188
V	Albay	201	59
V	Camarines Norte	156	42
V	Camarines Sur	341	86
V	Catanduanes	67	15
V	Masbate	103	30
V	Sorsogon	102	23
V, Sub-total		970	255
VI	Aklan	114	26
VI	Antique	66	16
VI	Capiz	91	31
VI	Guimaras	41	9
VI	Iloilo	279	62
VI	Negros Occidental	249	73
VI, Sub-total		840	217
VII	Bohol	186	42
VII	Cebu	754	192
VII	Negros Oriental	178	39
VII	Siquijor	34	8
VII, Sub-total		1,152	281
VIII	Biliran	68	4
VIII	Eastern Samar	122	20
VIII	Leyte	466	110



Region	Province	Registered Programs	TVET Provider
VIII	Northern Samar	104	16
VIII	Samar (Western Samar)	106	33
VIII	Southern Leyte	82	25
VIII, Sub-total		948	208
IX	Zamboanga City/Isabela City	227	46
IX	Zamboanga del Norte	202	47
IX	Zamboanga del Sur	172	55
IX	Zamboanga Sibugay	123	24
IX, Sub-total		724	172
X	Bukidnon	304	79
X	Camiguin	41	5
X	Lanao del Norte	468	90
X	Misamis Occidental	234	42
X	Misamis Oriental	440	88
X, Sub-total		1,487	304
XI	Davao de Oro	90	19
XI	Davao del Norte	170	52
XI	Davao del Sur	648	154
XI	Davao Occidental	38	6
XI	Davao Oriental	206	27



PROGRAM REGISTRATION



Region	Province	Registered Programs	TVET Provider
XI, Sub-total		1,152	258
XII	Cotabato City	0	0
XII	North Cotabato	180	55
XII	Sarangani-Gensan	276	47
XII	South Cotabato	274	56
XII	Sultan Kudarat	159	30
XII, Sub-total		889	188
CARAGA	Agusan del Norte	147	48
CARAGA	Agusan del Sur	111	27
CARAGA	Dinagat Islands	28	8
CARAGA	Surigao del Norte	112	17
CARAGA	Surigao del Sur	171	48
CARAGA, Sub-total		569	148
BARMM	Basilan	51	12
BARMM	Lanao del Sur	157	65
BARMM	Maguindanao	278	73
BARMM	Sulu	59	18
BARMM	Tawi-Tawi	92	22
BARMM, Sub-total		637	190
Overseas		3	2
Total		17,629	4,536

Source: TESDA-CO | Data as of December 31, 2023

Note: The TVET provider were counted based on the actual established centers and individual addresses



Table 25. Number of Registered Programs and TVET Provider by Sector: CY 2023

Sector	Registered Program	TVET Provider
Agriculture, Forestry and Fishery	3,060	1,384
Automotive and Land Transportation	1,255	800
Creative	1	1
Construction	1,558	648
Decorative Crafts	1	1
Electrical and Electronics	1,551	1,054
Footwear and Leathergoods	4	2
Furniture and Fixtures	3	3
Garments	272	206
Human Health/ Health Care	1,178	844
Heating, Ventilation, Airconditioning and Refrigeration	97	70
Information and Communication Technology	496	384
Logistics	2	2
Maritime	88	68
Metals and Engineering	1,716	810
Processed Food and Beverages	154	129
Social, Community Development and Other Services	922	744
Tourism (Hotel and Restaurant)	4,203	1,801
TVET	449	296
Others (Languages)	591	380
Utilities	4	4
Visual Arts	5	5
Wholesale and Retail Trading	19	16
Total	17,629	

Source: TESDA-CO | Data as of December 31, 2023

Note: The TVET provider were counted based on their sectoral offerings. If various qualifications are offered, the provider were counted for each sector.





Table 26. Number of TVET Provider by Type of Provider and Region: CY 2023

Region	Private	Public
NCR	505	26
CAR	111	7
I	239	23
II	149	32
III	452	39
IV-A	515	27
IV-B	167	21
V	220	35
VI	190	27
VII	255	26
VIII	187	21
IX	150	22
X	256	48
XI	241	17
XII	171	17
CARAGA	121	27
BARMM	171	19
Overseas	2	0
Total	4,102	434

Source: TESDA-CO | Data as of December 31, 2023

Note: The TVET provider were counted based on the actual established centers and individual addresses



Table 27. Number of TVET Provider by Type of Provider, Region and Province: CY 2023

Region	Province	Private	Public
NCR	CAMANAVA	66	5
NCR	City of Manila	78	1
NCR	MUNTIPARLASTAPAT	83	10
NCR	PAMAMARISAN	93	8
NCR	PASMAK	79	1
NCR	Quezon City	106	1
NCR, Sub-Total		505	26
CAR	Abra	4	0
CAR	Apayao	8	2
CAR	Benguet	53	3
CAR	Ifugao	19	1
CAR	Kalinga	20	0
CAR	Mountain Province	7	1
CAR, Sub-total		111	7
I	Ilocos Norte	20	5
I	Ilocos Sur	27	5
I	La Union	31	3
I	Pangasinan	160	11
I, Sub-total		238	24
II	Batanes	1	3
II	Cagayan	36	15
II	Isabela	81	6
II	Nueva Vizcaya	18	3



PROGRAM REGISTRATION



Region	Province	Private	Public
II	Quirino	14	4
II, Sub-total		150	31
III	Aurora	13	3
III	Bataan	31	6
III	Bulacan	112	10
III	Nueva Ecija	111	8
III	Pampanga	91	6
III	Tarlac	57	5
III	Zambales	37	1
III, Sub-total		452	39
IV-A	Batangas	72	3
IV-A	Cavite	116	3
IV-A	Laguna	150	10
IV-A	Quezon	90	5
IV-A	Rizal	87	6
IV-A, Sub-total		515	27
IV-B	Marinduque	11	3
IV-B	Occidental Mindoro	17	2
IV-B	Oriental Mindoro	96	12
IV-B	Palawan	29	2
IV-B	Romblon	14	2
IV-B, Sub-total		167	21
V	Albay	49	10
V	Camarines Norte	39	3



PROGRAM REGISTRATION



Region	Province	Private	Public
V	Camarines Sur	76	10
V	Catanduanes	12	3
V	Masbate	27	3
V	Sorsogon	17	6
V, Sub-total		220	35
VI	Aklan	23	3
VI	Antique	13	3
VI	Capiz	28	3
VI	Guimaras	6	3
VI	Iloilo	53	9
VI	Negros Occidental	67	6
VI, Sub-total		190	27
VII	Bohol	33	9
VII	Cebu	181	11
VII	Negros Oriental	36	3
VII	Siquijor	5	3
VII, Sub-total		255	26
VIII	Biliran	2	2
VIII	Eastern Samar	15	5
VIII	Leyte	103	7
VIII	Northern Samar	13	3
VIII	Samar (Western Samar)	30	3
VIII	Southern Leyte	24	1



Region	Province	Private	Public
VIII, Sub-total		187	21
IX	Zamboanga City/Isabela City	41	5
IX	Zamboanga del Norte	41	6
IX	Zamboanga del Sur	47	8
IX	Zamboanga Sibugay	21	3
IX, Sub-total		150	22
X	Bukidnon	69	10
X	Camiguin	2	3
X	Lanao del Norte	74	16
X	Misamis Occidental	36	6
X	Misamis Oriental	75	13
X, Sub-total		256	48
XI	Davao de Oro	17	2
XI	Davao del Norte	48	4
XI	Davao del Sur	147	7
XI	Davao Occidental	4	2
XI	Davao Oriental	25	2
XI, Sub-total		241	17
XII	Cotabato City	0	0
XII	North Cotabato	47	8
XII	Sarangani	43	4
XII	South Cotabato	53	3



PROGRAM REGISTRATION



Region	Province	Private	Public
XII	Sultan Kudarat	28	2
XII, Sub-total		171	17
CARAGA	Agusan del Norte	39	9
CARAGA	Agusan del Sur	24	3
CARAGA	Dinagat Islands	7	1
CARAGA	Surigao del Norte	10	7
CARAGA	Surigao del Sur	41	7
CARAGA, Sub-total		121	27
BARMM	Basilan	11	1
BARMM	Lanao del Sur	60	5
BARMM	Maguindanao	67	6
BARMM	Sulu	14	4
BARMM	Tawi-Tawi	19	3
BARMM, Sub-total		171	19
Overseas		2	0
Total		4,102	434

Source: TESDA-CO | Data as of December 31, 2023

Note: The TVET provider were counted based on the actual established centers and individual addresses



Table 28. Number of Private TVET Provider by Classification and Region: CY 2023

Region	HEI	NGO	Farm School	TVI	Total
NCR	58			447	505
CAR	6	1	31	73	111
I	35		23	180	238
II	8		64	78	150
III	58		47	347	452
IV-A	57	3	69	386	515
IV-B	5		48	114	167
V	18		47	155	220
VI	24	1	26	139	190
VII	16		22	217	255
VIII	15	1	81	90	187
IX	15		18	117	150
X	14		68	174	256
XI	19		21	201	241
XII	38		12	121	171
CARAGA	23		60	38	121
BARMM	21	1	5	144	171
Overseas				2	2
Total	430	7	642	3,023	4,102

Source: TESDA-CO | Data as of December 31, 2023

Note: The TVET provider were counted based on the actual established centers and individual addresses



Table 29. Number of Public TVET Provider by Classification and Region: CY 2023

Region	LUC	LGU	NGA	SUCs	TTI	Total
NCR	1	11		3	11	26
CAR		2		2	3	7
I	1	8	1	3	11	24
II		5	1	14	11	31
III		17	4	6	12	39
IV-A	4	9	2		12	27
IV-B		8	2		11	21
V	1	16		3	15	35
VI		10		4	13	27
VII	1	10		1	14	26
VIII		7			14	21
IX	7	2	1	5	7	22
X		18	11	5	14	48
XI	1	3	1		12	17
XII		6		3	8	17
CARAGA		12		5	10	27
BARMM	1	9	4	5		19
Overseas						0
Total	17	153	27	59	178	434

Source: TESDA-CO | Data as of December 31, 2023

Note: The TVET provider were counted based on the actual established centers and individual addresses



Table 30. Number of NTTC Holders by Region: CY 2023

Region	No. of NTTC Holders	No. of NTTC Holders (Warm Body)
NCR	7,772	2,719
CAR	1,221	577
I	2,477	1,276
II	1,804	1,089
III	4,654	2,514
IV-A	4,238	2,535
IV-B	3,850	1,116
V	1,978	1,436
VI	6,507	1,745
VII	2,339	1,289
VIII	3,129	1,670
IX	1,529	937
X	3,194	1,664
XI	2,760	1,595
XII	3,077	1,475
CARAGA	785	515
BARMM	978	644
Total	52,292	24,796

Source: TESDA-CO | Data as of December 31, 2023

Notes: Numbers are based on per Qualification count



Table 31. Number of NTTC Holders by Region and Province: CY 2023

Region	Province	Qualification		
		Female	Male	Total
NCR	CAMANAVA	195	396	591
NCR	City of Manila	653	865	1,518
NCR	MUNTIPARLASTAPAT	732	1,159	1,891
NCR	PAMAMARISAN	620	931	1,551
NCR	PASMAK	521	943	1,464
NCR	Quezon City	261	496	757
NCR, Sub-total		2,982	4,790	7,772
CAR	Abra	51	163	214
CAR	Apayao	29	59	88
CAR	Benguet	271	322	593
CAR	Ifugao	84	99	183
CAR	Kalinga	32	44	76
CAR	Mountain Province	32	35	67
CAR, Sub-total		499	722	1,221
I	Ilocos Norte	140	194	334
I	Ilocos Sur	113	175	288
I	La Union	134	251	385
I	Pangasinan	698	772	1,470
I, Sub-total		1,085	1,392	2,477
II	Batanes	2	6	8
II	Cagayan	284	334	618
II	Isabela	372	515	887



PROGRAM REGISTRATION



Region	Province	Qualification		
		Female	Male	Total
II	Nueva Vizcaya	70	90	160
II	Quirino	52	79	131
II, Sub-total		780	1,024	1,804
III	Aurora	135	118	253
III	Bataan	217	325	542
III	Bulacan	328	605	933
III	Nueva Ecija	359	476	835
III	Pampanga	352	541	893
III	Tarlac	336	464	800
III	Zambales	130	268	398
III, Sub-total		1,857	2,797	4,654
IV-A	Batangas	320	445	765
IV-A	Cavite	322	467	789
IV-A	Laguna	347	628	975
IV-A	Quezon	392	530	922
IV-A	Rizal	341	446	787
IV-A, Sub-total		1,722	2,516	4,238
IV-B	Marinduque	133	233	366
IV-B	Occidental Mindoro	184	263	447
IV-B	Oriental Mindoro	830	1,140	1,970
IV-B	Palawan	344	456	800
IV-B	Romblon	107	160	267



Region	Province	Qualification		
		Female	Male	Total
IV-B, Sub-total		1,598	2,252	3,850
V	Albay	202	318	520
V	Camarines Norte	82	107	189
V	Camarines Sur	306	367	673
V	Catanduanes	56	73	129
V	Masbate	83	138	221
V	Sorsogon	88	158	246
V, Sub-total		817	1,161	1,978
VI	Aklan	377	527	904
VI	Antique	166	232	398
VI	Capiz	481	475	956
VI	Guimaras	107	240	347
VI	Iloilo	1,133	1,318	2,451
VI	Negros Occidental	552	899	1,451
VI, Sub-total		2,816	3,691	6,507
VII	Bohol	167	230	397
VII	Cebu	465	957	1,422
VII	Negros Oriental	191	229	420
VII	Siquijor	52	48	100
VII, Sub-total		875	1,464	2,339
VIII	Biliran	84	161	245
VIII	Eastern Samar	215	312	527
VIII	Leyte	586	647	1,233



Region	Province	Qualification		
		Female	Male	Total
VIII	Northern Samar	278	310	588
VIII	Samar (Western Samar)	117	190	307
VIII	Southern Leyte	80	149	229
VIII, Sub-total		1,360	1,769	3,129
IX	Zamboanga City	140	190	330
IX	Zamboanga Del Norte	141	261	402
IX	Zamboanga del Sur	238	248	486
IX	Zamboanga Sibugay	155	156	311
IX, Sub-total		674	855	1,529
X	Bukidnon	141	187	328
X	Camiguin	92	57	149
X	Lanao del Norte	426	484	910
X	Misamis Occidental	217	291	508
X	Misamis Oriental	509	790	1,299
X, Sub-total		1,385	1,809	3,194
XI	Compostela Valley	88	133	221
XI	Davao City	139	156	295
XI	Davao de Oro	31	51	82
XI	Davao del Norte	185	231	416
XI	Davao del Sur	437	756	1,193
XI	Davao Occidental	10	63	73
XI	Davao Oriental	210	270	480
XI, Sub-total		1,100	1,660	2,760



PROGRAM REGISTRATION



Region	Province	Qualification		
		Female	Male	Total
XII	Cotabato City	37	85	122
XII	North Cotabato	213	354	567
XII	Sarangani	353	463	816
XII	Sarangani-GenSan	43	52	95
XII	South Cotabato	438	606	1,044
XII	Sultan Kudarat	191	242	433
XII, Sub-total		1,275	1,802	3,077
CARAGA	Agusan del Norte	65	145	210
CARAGA	Agusan del Sur	61	97	158
CARAGA	Dinagat Islands	11	13	24
CARAGA	Surigao del Norte	66	146	212
CARAGA	Surigao del Sur	53	128	181
CARAGA, Sub-total		256	529	785
BARMM	Basilan	49	60	109
BARMM	Lanao del Sur	86	58	144
BARMM	Maguindanao	136	302	438
BARMM	Sulu	51	58	109
BARMM	Tawi-Tawi	71	107	178
BARMM, Sub-total		393	585	978
Total		21,474	30,818	52,292

Source: TESDA-CO | Data as of December 31, 2023

Notes: Numbers are based on per Qualification count



Table 32. Number of NTTC Holders by Sector: CY 2023

Sector	Number of NTTC Holders
Agriculture, Forestry And Fishery	8,059
Automotive And Land Transportation	5,563
Construction	5,045
Creative	2
Electrical And Electronics	5,872
Footwear And Leathergoods	2
Furniture And Fixtures	4
Garments	1,101
Heating, Ventilation, Airconditioning And Refrigeration	413
Human Health/ Health Care	3,619
Information And Communication Technology	466
Logistics	10
Maritime	280
Metals And Engineering	4,680
Processed Food & Beverages	663
Social, Community Development And Other Services	2,874
Tourism (Hotel And Restaurant)	13,465
Utilities (Water Supply, Sewerage, Waste Management, Etc.)	33
Visual Arts	44
Wholesale And Retail Trading	97
Total	52,292

Source: TESDA-CO | Data as of December 31, 2023

Notes: Numbers are based on per Qualification count



Table 33. Number of TVET Output for Trainer's Methodology by Region and Sex: CY 2023

Region	Enrolled			Graduates			Assessed			Certified		
	Female	Male	Total	Female	Male	Total	Female	Male	Total	Female	Male	Total
NCR	474	542	1,016	344	360	704	225	219	444	150	144	294
CAR	94	68	162	90	62	152	85	68	153	58	43	101
I	138	131	269	92	98	190	93	79	172	72	58	130
II	207	144	351	153	97	250	163	108	271	146	96	242
III	309	265	574	242	188	430	237	131	368	186	89	275
IV-A	279	275	554	220	215	435	297	396	693	241	333	574
IV-B	126	92	218	106	77	183	58	54	112	47	46	93
V	302	285	587	224	204	428	212	178	390	155	104	259
VI	176	194	370	166	175	341	131	129	260	79	81	160
VII	191	102	293	162	93	255	269	172	441	193	107	300
VIII	288	202	490	262	162	424	189	115	304	162	94	256
IX	301	224	525	168	131	299	193	147	340	155	116	271
X	268	184	452	218	137	355	148	100	248	107	59	166
XI	406	292	698	308	223	531	251	287	538	160	139	299
XII	112	121	233	273	218	491	236	217	453	170	144	314
CARAGA	103	85	188	66	65	131	82	90	172	62	65	127
BARMM	235	153	388	187	119	306	228	174	402	176	118	294
Total	4,009	3,359	7,368	3,281	2,624	5,905	3,097	2,664	5,761	2,319	1,836	4,155

Source: Enrolled and Graduates - TESDA-ICTO and Assessed and Certified - TESDA-CO



Table 34. Number of Enrolled and Graduates for Trainers Methodology by Region, Province and Sex: CY 2023

Region	Province	Enrolled			Graduates		
		Female	Male	Total	Female	Male	Total
NCR	CAMANAVA	33	71	104	24	44	68
NCR	City of Manila	134	134	268	121	125	246
NCR	MUNTIPARLASTAPAT	106	121	227	41	47	88
NCR	PAMAMARISAN	154	174	328	102	97	199
NCR	PASMAK	36	27	63	56	47	103
NCR	Quezon City	11	15	26	0	0	0
NCR, Sub-total		474	542	1,016	344	360	704
CAR	Abra	24	20	44	24	17	41
CAR	Apayao	6	9	15	16	11	27
CAR	Benguet	44	32	76	37	31	68
CAR	Kalinga	20	7	27	13	3	16
CAR, Sub-total		94	68	162	90	62	152
I	Ilocos Norte	54	50	104	19	17	36
I	Ilocos Sur	7	18	25	5	18	23
I	La Union	8	15	23	8	15	23
I	Pangasinan	69	48	117	60	48	108
I, Sub-total		138	131	269	92	98	190
II	Cagayan	88	48	136	52	23	75
II	Isabela	82	67	149	65	48	113
II	Nueva Vizcaya	28	19	47	27	17	44
II	Quirino	9	10	19	9	9	18
II, Sub-total		207	144	351	153	97	250



Region	Province	Enrolled			Graduates		
		Female	Male	Total	Female	Male	Total
III	Aurora	15	10	25	17	5	22
III	Bataan	51	32	83	40	20	60
III	Bulacan	115	86	201	115	82	197
III	Nueva Ecija	50	38	88	29	21	50
III	Pampanga	26	31	57	22	30	52
III	Tarlac	46	44	90	13	15	28
III	Zambales	6	24	30	6	15	21
III, Sub-total		309	265	574	242	188	430
IV-A	Batangas	118	92	210	94	83	177
IV-A	Cavite	55	69	124	39	56	95
IV-A	Laguna	83	85	168	44	38	82
IV-A	Quezon	14	13	27	13	12	25
IV-A	Rizal	9	16	25	30	26	56
IV-A, Sub-total		279	275	554	220	215	435
IV-B	Marinduque	19	3	22	16	0	16
IV-B	Occidental Mindoro	36	45	81	36	45	81
IV-B	Palawan	63	37	100	46	25	71
IV-B	Romblon	8	7	15	8	7	15
IV-B, Sub-total		126	92	218	106	77	183
V	Albay	189	177	366	141	124	265
V	Camarines Norte	13	8	21	12	7	19
V	Camarines Sur	59	67	126	36	43	79



Region	Province	Enrolled			Graduates		
		Female	Male	Total	Female	Male	Total
V	Masbate	10	16	26	18	21	39
V	Sorsogon	31	17	48	17	9	26
V, Sub-total		302	285	587	224	204	428
VI	Aklan	13	12	25	1	6	7
VI	Antique	1	6	7			0
VI	Capiz	37	33	70	26	22	48
VI	Iloilo	102	121	223	116	125	241
VI	Negros Occidental	23	22	45	23	22	45
VI, Sub-total		176	194	370	166	175	341
VII	Bohol	19	10	29	19	10	29
VII	Cebu	138	87	225	109	78	187
VII	Negros Oriental	15	4	19	15	4	19
VII	Siquijor	19	1	20	19	1	20
VII, Sub-total		191	102	293	162	93	255
VIII	Biliran	21	13	34	21	13	34
VIII	Eastern Samar	72	30	102	63	24	87
VIII	Leyte	64	60	124	60	52	112
VIII	Northern Samar	79	52	131	77	38	115
VIII	Samar (Western Samar)	17	29	46	15	23	38
VIII	Southern Leyte	35	18	53	26	12	38
VIII, Sub-total		288	202	490	262	162	424
IX	City of Isabela (Not a Province)	108	63	171	26	16	42
IX	Zamboanga del Norte	87	73	160	71	61	132



Region	Province	Enrolled			Graduates		
		Female	Male	Total	Female	Male	Total
IX	Zamboanga del Sur	43	46	89	30	23	53
IX	Zamboanga Sibugay	63	42	105	41	31	72
IX, Sub-total		301	224	525	168	131	299
X	Bukidnon	23	31	54	8	10	18
X	Lanao del Norte	75	40	115	68	36	104
X	Misamis Occidental	57	41	98	33	23	56
X	Misamis Oriental	113	72	185	109	68	177
X, Sub-total		268	184	452	218	137	355
XI	Compostela Valley	88	72	160	85	65	150
XI	Davao del Norte	22	24	46	20	22	42
XI	Davao del Sur	209	141	350	107	80	187
XI	Davao Occidental	26	33	59	36	34	70
XI	Davao Oriental	61	22	83	60	22	82
XI, Sub-total		406	292	698	308	223	531
XII	North Cotabato			0	13	10	23
XII	Sarangani	86	83	169	226	161	387
XII	South Cotabato	26	38	64	34	47	81
XII, Sub-total		112	121	233	273	218	491
CARAGA	Agusan del Norte	11	11	22	3	1	4
CARAGA	Agusan del Sur	9	11	20	11	14	25
CARAGA	Dinagat Islands			0	15	10	25
CARAGA	Surigao del Norte	58	54	112	12	32	44
CARAGA	Surigao del Sur	25	9	34	25	8	33



Region	Province	Enrolled			Graduates		
		Female	Male	Total	Female	Male	Total
CARAGA, Sub-total		103	85	188	66	65	131
BARMM	Basilan	34	16	50	34	16	50
BARMM	Lanao del Sur	123	54	177	78	31	109
BARMM	Maguindanao	38	49	87	27	29	56
BARMM	Sulu	14	10	24	14	10	24
BARMM	Tawi-Tawi	26	24	50	34	33	67
BARMM, Sub-total		235	153	388	187	119	306
Total		4,009	3,359	7,368	3,281	2,624	5,905

Source: TESDA-ICTO



Table 35. National Trainers Development Program Output: CY 2023

No.	Training Program	Enrolled			Graduates		
		Female	Male	Total	Female	Male	Total
1	Training of Trainers on Start and Improve Your Business (SIYB) Business Game	3	0	3	0	0	0
2	Writing Workshop on Work Readiness Modules on 21st Century Skills for NCs III & IV	8	11	19	8	11	19
3	COC 1: Conduct Training Needs Analysis Leading to TM Level II	12	13	25	12	13	25
4	COC 2: Develop Training Curriculum Leading to TM Level II	12	13	25	12	11	23
5	COC 3: Develop Learning Materials Leading to TM Level II	11	15	26	11	14	25
6	COC 4: Develop Competency Assessment Tools Leading to TM Level II	8	18	26	6	15	21
7	COC 5:Design and Develop Maintenance System leading to TM Level II	10	15	25	10	11	21
8	COC 6:Develop eLearning Materials leading to TM Level II	8	17	25	8	10	18
9	COC 7: Facilitate Development of Competency Standards Leading to TM Level II	11	14	25	10	11	21
10	Regional Lead Trainers Development Program on Quality Cost Delivery	1	9	10	1	9	10
11	Trainers' Training on the Operation, Servicing and Maintenance of C02 System in Industrial Refrigeration	1	17	18	1	17	18
12	Training cum Production on Developing STEMified Competency-Based Curriculum (CBC)	21	29	50	21	20	41
Total		106	171	277	100	142	242

Source: TESDA - National TVET Trainers Academy | Data as of December 31, 2023



Table 36. Number of Promulgated Training Regulations (TRs) by Sector: CY 2023

Sector	Number of Training Regulations
Agriculture Forestry and Fishery	38
Automotive and Land Transportation	40
Chemicals/ Plastics/ Petrochemicals	1
Construction	43
Creative Sector	7
Decorative Crafts	2
Electrical & Electronics	21
Footwear & Leathergoods	2
Furniture and Fixtures	1
Garments	3
Heating, Ventilation, Airconditioning and Refrigeration	7
Human Health / Health Care	23
Information and Communication Technology	19
Logistics	6
Maritime	3
Metals and Engineering	34
Processed Food & Beverages	7
Pyrotechnics	1
Social, Community Development and Other Services	24
Tourism (Hotel and Restaurant)	22
TVET	3
Utilities	12
Visual Arts	2
Wholesale and Retail Trading	1
Total	322

Source: TESDA - Qualifications Standards Office (QSO)

Note: The list of promulgated Training Regulation (TRs) is indicated in Annex B



Table 37. List of Developed Competency Standards (CS): CY 2023

No.	Sector	Qualification Title
1	Agriculture Forestry and Fishery	Abaca Production Level II*
2	Agriculture Forestry and Fishery	Abaca Fiber Classifying Level II*
3	Agriculture Forestry and Fishery	Coffee Post-Harvest Handling and Processing Level II*
4	Agriculture Forestry and Fishery	Mangosteen Production and Processing (XII) *
5	Automotive and Land Transportation	Battery Electric Vehicle Servicing (PUV) Level II
6	Automotive and Land Transportation	Quality, Cost, Delivery **
7	Heating, Ventilation, Airconditioning and Refrigeration	Industrial Refrigeration Operation and Maintenance Level III
8	Human Health / Health Care	Aesthetic Services Level III (NCR) *
9	Information and Communication Technology	Data Analytics Level III
10	Information and Communication Technology	Digital Marketing Level III (VII)*
11	Information and Communication Technology	Content Creation (Social Media) Level III*
12	Language	Language A1 Level
13	Language	Language A2 Level
14	Language	Language B1 Level
15	Social, Community Development and Other Services	Halal Awareness **
16	Social, Community Development and Other Services	Entrepreneurship **
17	Tourism	Beverage Products Development Level IV (NCR)*
18	TVET	Facilitate e-Learning Sessions (FeLS) **
19	Utilities	Solid Waste Management Operation Level III

Source: TESDA - Qualification Standards Office (QSO)

Note: *developed through ABDD

**Micro CS



Table 38. List of Developed Training Regulations (TRs): CY 2023

No.	Sector	Qualification Title
Promulgated		
1	Social, Community Development and Other Services	Data Collection NC II
2	Social, Community Development and Other Services	Printing Services (Prepress Technical Operations) NC I
3	Social, Community Development and Other Services	Printing Services (Prepress Technical Operations) NC II
4	Creative	Beadwork Accessories and Diversified Beadwork Products Making NC II
5	Creative	Handloom Weaving (Backstrap) NC II
6	Creative	Paper Mache Making NC II
Not Yet Promulgated		
1	Information and Communication Technology	Cyber Threat Monitoring NC I
2	Information and Communication Technology	Cyber Threat Mitigation NC II
3	Creative	Scriptwriting (Film) NC III
4	Creative	Scriptwriting (TV and Digital Series) NC III
5	Creative	Scriptwriting (Radio and Audio Production) NC III

Source: TESDA - Qualification Standards Office (QSO)



Table 39. List of Reviewed Training Regulations (TRs): CY 2023

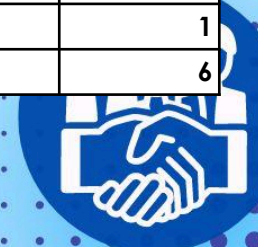
No.	Sector	Qualification Title
Promulgated		
1	Footwear & Leathergoods	Footwear Making NC II to Shoemaking NC I
2	Footwear & Leathergoods	Footwear Making NC II to Shoeamaking NC II
3	Electrical & Electronics	Biomedical Equipment Servicing NC II
4	Electrical & Electronics	Instrumentation and Control Servicing NC II
5	Electrical & Electronics	Instrumentation and Control Servicing NC III
6	Electrical & Electronics	Instrumentation and Control Servicing NC IV
7	Tourism (Hotel and Restaurant)	Bread and Pastry NC II to Food Production (Bread and Patisserie) NC II
Not Yet Promulgated		
1	Information and Communication Technology	Web Development NC III to Web Design NC III
2	Information and Communication Technology	Web Development NC III to Web Development (Front-End) NC III
3	Information and Communication Technology	Web Development NC III to Web Development (Back-End) NC III
4	Garments	Dressmaking NC II & Tailoring NC II to Garment Production NC II

Source: TESDA - Qualification Standards Office (QSO)



Table 40. Number of Partnership Forged by Region, by Sector: CY 2023

Sector	Regions/Office																	Total
	NCR	CAR	I	II	III	IV-A	IV-B	V	VI	VII	VIII	IX	X	XI	XII	CARAGA	Central Office	
Agriculture, Forestry and Fishery			3	26	3	3	1	16	4	6	5	1	6	3	4	4		85
Automotive and Land Transportation	1	6	1	20	4		3		8	10	9	7	7	12	8	6		102
Construction	1	1	4	16	5	1	4	1	4	42	7	5	3	2	5	8		109
Creative Sector											1				1			2
Education				1													1	2
Electrical and Electronics	1	3	4	16	14	28	2		5	4		1		6			1	85
Furniture and Fixtures				1		1												2
Garments		1		11		2	1	1	1	2	2	5				2		28
Heating, Ventilation, Airconditioning and Refrigeration	5				2	1			2	1	3	3		2				19
Human Health / Health Care	6	1		20		1	1		5	18	2			1	1			56
Information and Communication Technology	1			6					2	13	2			3		1	4	32
Language and Culture																	1	1
Logistics				1	1													2
Metals and Engineering	1	1	8	8	5	4	4	2	3	10	1	2	3	13		4		69
Multisectoral																	10	10
Other service activities											1							1
Processed Food and Beverages	1			9			2	2						4		4		22
Social, Community Development and Other Services	3			9				4	2	11	4	1	1	2	6	2		45
Tourism	5	2	9	25	2	10	6	3	27	12	11	5	1	7	1	1	2	129
Transportation and Storage											1							1
TVET	1						1		1					1	2			6



Sector	Regions/Office																	Total
	NCR	CAR	I	II	III	IV-A	IV-B	V	VI	VII	VIII	IX	X	XI	XII	CARAGA	Central Office	
Utilities				4														4
Visual Arts		1														1		2
Wholesale and Retail				2	4	16				1								23
Total	26	16	29	175	40	67	25	29	64	130	49	30	21	56	28	33	19	837

Source: TESDA - Partnerships and Linkages Office



Table 41. Number of Partnership Forged by Sector: CY 2023

Sector	Partnerships Forged
Agriculture, Forestry and Fishery	85
Automotive and Land Transportation	102
Construction	109
Creative Sector	2
Education	2
Electrical and Electronics	85
Furniture and Fixtures	2
Garments	28
Heating, Ventilation, Airconditioning and Refrigeration	19
Human Health / Health Care	56
Information and Communication Technology	32
Language and Culture	1
Logistics	2
Metals and Engineering	69
Multisectoral	10
Other service activities	1
Processed Food and Beverages	22
Social, Community Development and Other Services	45
Tourism	129
Transportation and Storage	1
TVET	6
Utilities	4
Visual Arts	2
Wholesale and Retail	23
TOTAL	837

Source: TESDA - Partnerships and Linkages Office



Table 42. Number of Enterprise-based Training Implementers: CY 2023

Region	Apprenticeship	Learnership	Industry-based / company training	Dual Training System	PAFSE	SIL	Training Conducted in Farm schools/Enterprises	Others	Total
NCR	12	3	2			13		2	30
CAR	1	10	2	1	4		14	3	32
I	2	6	3		1	1	26	8	39
II	4	9	1		32		13	13	59
III	2	6	2	5	3	4	44	24	66
IV-A	7	1	3	3	1		19	22	34
IV-B					26		22	17	48
V			2	2	7		35	12	46
VI	2	1	1			2	22	3	28
VII	4	1	3	1	12		13	6	34
VIII	1	11	1		61		22	6	96
IX	4		1	3	2	1	16	3	27
X	5	6	5	5	38		36	3	95
XI		6	3	1		1	16	7	27
XII	1		8		6	1	22	8	38
CARAGA	6		2		22	1	20	21	51
BARMM			1				3	0	4
Total	51	60	40	21	215	24	343	158	912

Source: TESDA - Partnerships and Linkages Office

Note: SIL data is as of April 2023



Table 43. Number of Partnership Forged by Region by Classification of Partner: CY 2023

Region	Academe		Association of MSMEs	Cooperative	Corporate Foundation	Development Partner (ILO, UNESCO, JICA, UNDP, other UN and international organizations, etc)	Government-Owned and Controlled Corporation (GOCC)	Individual	Industry associations / industry councils	Industry Boards	Local Government Unit (LGU)
	Private	Public									
NCR	1							4			1
CAR			1	1							
I	1	1		1			2	4			2
II	6	4	1	8		1	6	24	1		16
III				1							1
IV-A									3		
IV-B											4
V		1		2	2			4			5
VI		1		1				1			6
VII	2	3		1	2		1				
VIII				2	1			19			
IX	1		1								1
X	1			1				13	4		1
XI	1	1		1				9			
XII			3	4							5
CARAGA			1					8			
CO					2				2	3	
Total	13	11	7	23	7	1	9	86	10	3	42



Region	Micro, Small and Medium Enterprises (MSMEs)	National Government Agency (NGA)	Non-Government Organization / Civil Society Organization (Rotary Club, Jaycees, Lions Club, Foundations, transport groups, farmers' organizations, Religious Group, etc.)	Private Companies (Include Only Large Companies or those employing 200 employees and above (DTI definition))	Professional Group / Association / Workers Group	Total
NCR	15	1	1	3		26
CAR	12		1	1		16
I	2	3		13		29
II	88	13	3	4		175
III	29			9		40
IV-A	24			39		66
IV-B	18			3		25
V	12		1	2		29
VI	52	2		1		64
VII	94	2	1	23	1	130
VIII	24			3		49
IX	21			6		30
X				2		22
XI	33	2		9		56
XII	7		3	4	2	28
CARAGA	20	2		2		33
CO		7	2	3		19
Total	451	32	12	127	3	837

Source: TESDA - Partnerships and Linkages Office



Table 44. Number of Partnership Forged by Region by Delivery Mode: CY 2023

Region	EBT - Apprenticeship	EBT - DTS	EBT - In-Company	EBT - Learnership	EBT - SIL	EBT - Training Conducted in Farm School	EBT- PAFSE	Total
NCR	0	0	0	0	23	0	0	23
CAR	0	1	0	0	12	0	0	13
I	0	0	0	0	21	0	0	21
II	0	0	0	0	111	0	0	111
III	5	0	1	0	33	0	0	39
IV-A	18	27	1	1	4	0	0	51
IV-B	0	0	0	0	22	0	0	22
V	0	0	0	0	16	3	2	21
VI	0	0	0	0	57	0	0	57
VII	0	0	1	0	6	0	0	7
VIII	0	0	0	0	45	0	0	45
IX	0	0	0	0	15	0	0	15
X	0	0	0	0	14	0	0	14
XI	0	1	0	0	46	0	0	47
CARAGA	0	0	0	3	26	0	0	29
Total	23	29	3	4	428	3	2	492

Source: TESDA - Partnerships and Linkages Office





AGRICULTURE, FORESTRY, AND FISHERY

Region	Enrolled	Graduated	Assessed	Certified
NCR	2,233	2,161	10	10
CAR	13,204	13,263	6,698	6,598
I	19,985	18,645	3,197	3,133
II	25,712	25,475	9,313	9,096
III	15,766	16,580	6,207	6,018
IV-A	10,633	9,571	5,930	5,650
IV-B	10,199	9,976	4,227	3,799
V	12,526	11,746	6,719	6,247
VI	11,988	11,933	5,778	5,527
VII	23,374	21,646	4,482	4,421
VIII	30,954	23,576	11,441	11,127
IX	10,355	9,803	4,427	4,366
X	18,271	19,645	6,585	6,449
XI	13,134	12,120	6,144	5,717
XII	19,390	20,249	9,657	9,516
CARAGA	14,027	13,236	4,872	4,728
BARMM	4,152	4,635	3,890	3,702
Overseas			0	0
Portfolio			0	0
RLA			13	3
Total	255,903	244,260	99,590	96,107

Assessors	1,630
NTTC Holder	8,059
Assessment Center	874
TVET Provider	1,384
Registered Program	3,060

Source: Enrolled and Graduates - TESDA-ICTO and Assessed and Certified - TESDA-CO



**AUTOMOTIVE AND LAND TRANSPORTATION**

Region	Enrolled	Graduated	Assessed	Certified
NCR	6,011	4,633	10,485	10,377
CAR	6,473	6,011	4,452	4,227
I	6,105	3,824	5,962	5,656
II	11,896	10,661	7,583	7,489
III	9,960	7,396	7,579	7,064
IV-A	5,652	5,645	10,567	10,333
IV-B	11,780	11,330	4,565	4,494
V	8,327	7,740	4,853	4,075
VI	6,722	6,069	5,076	4,783
VII	4,951	4,567	6,231	6,111
VIII	7,023	5,919	5,161	5,081
IX	4,625	3,983	3,751	3,473
X	8,362	7,604	5,913	5,394
XI	7,341	6,177	6,903	6,500
XII	12,121	11,353	9,025	8,526
CARAGA	10,582	10,141	3,277	2,789
BARMM	1,758	1,671	2,850	2,682
Overseas			0	0
Portfolio			22	19
RLA			29	26
Total	129,689	114,724	104,284	99,099

Assessors	1,621
NTTC Holder	5,563
Assessment Center	837
TVET Provider	800
Registered Program	1,255

Source: Enrolled and Graduates - TESDA-ICTO and Assessed and Certified - TESDA-CO



**ANNEX A -
SECTORAL DATA**

TECHNICAL EDUCATION AND SKILLS DEVELOPMENT AUTHORITY

CHEMICALS / PLASTICS / PETROCHEMICALS

Region	Enrolled	Graduated	Assessed	Certified
III	34	34		
IV-A	189	189		
VII	259	259		
Total	482	482	0	0

Assessors	0
NTTC Holder	
Assessment Center	0
TVET Provider	
Registered Program	

Source: Enrolled and Graduates - TESDA-ICTO and Assessed and Certified - TESDA-CO



**CONSTRUCTION**

Region	Enrolled	Graduated	Assessed	Certified
NCR	3,338	3,043	15,835	15,451
CAR	4,908	4,592	3,703	3,617
I	3,694	2,938	3,714	3,576
II	2,648	2,553	2,400	2,330
III	5,294	4,533	10,743	10,359
IV-A	4,095	4,213	12,019	11,366
IV-B	2,659	2,697	4,574	4,505
V	2,941	2,652	3,437	3,263
VI	2,452	1,937	2,470	2,350
VII	3,273	2,968	8,636	8,350
VIII	8,757	6,727	5,113	5,031
IX	3,449	3,114	2,521	2,423
X	6,105	5,492	4,520	4,367
XI	2,475	2,339	3,102	2,862
XII	4,129	4,233	3,941	3,873
CARAGA	4,133	4,013	2,271	2,152
BARMM	3,393	3,252	3,083	2,820
Overseas			21	20
Portfolio			6	6
RLA			54	44
Total	67,743	61,296	92,163	88,765

Assessors	1,919
NTTC Holder	5,045
Assessment Center	1,269
TVET Provider	648
Registered Program	1,558

Source: Enrolled and Graduates - TESDA-ICTO and Assessed and Certified - TESDA-CO



ANNEX A -
SECTORAL DATA

TECHNICAL EDUCATION AND SKILLS DEVELOPMENT AUTHORITY

CREATIVE

Region	Enrolled	Graduated	Assessed	Certified
NCR	194	194		
CAR	185	185		
III	30	30		
IV-A	28	76		
IV-B	295	278		
V	83	83		
X	92	92		
XI	76	76		
XII	17	17		
Total	1,000	1,031	0	0

Assessors	3
NTTC Holder	2
Assessment Center	0
TVET Provider	1
Registered Program	1

Source: Enrolled and Graduates - TESDA-ICTO and Assessed and Certified - TESDA-CO



**ANNEX A -
SECTORAL DATA**

TECHNICAL EDUCATION AND SKILLS DEVELOPMENT AUTHORITY

DECORATIVE CRAFTS

Region	Enrolled	Graduated	Assessed	Certified
NCR	90	90		
CAR	276	276		
III	95	95		
IV-A	65	37		
IV-B	140	140		
V	21	21		
VIII	100	100		
X	75	71		
XI	477	418		
XII	9	9		
CARAGA	593	615		
Total	1,941	1,872	0	0

Assessors	0
NTTC Holder	0
Assessment Center	0
TVET Provider	1
Registered Program	1

Source: Enrolled and Graduates - TESDA-ICTO and Assessed and Certified - TESDA-CO



**ELECTRICAL AND ELECTRONICS**

Region	Enrolled	Graduated	Assessed	Certified
NCR	10,764	8,206	16,611	15,738
CAR	3,014	2,691	2,561	2,265
I	7,333	4,739	5,997	4,993
II	8,966	8,373	5,380	4,752
III	6,892	6,380	9,823	8,736
IV-A	10,122	7,357	15,168	13,552
IV-B	3,041	2,919	3,237	2,953
V	8,121	7,057	9,533	7,580
VI	2,436	2,070	4,366	3,150
VII	7,574	5,778	9,863	8,965
VIII	11,040	9,253	9,419	8,940
IX	5,152	4,170	4,737	3,821
X	5,440	4,910	5,313	4,730
XI	4,271	3,768	5,685	4,520
XII	7,428	6,070	6,632	5,775
CARAGA	3,582	3,124	3,184	2,450
BARMM	2,229	2,215	3,683	3,257
Overseas			111	96
Portfolio			6	6
RLA			35	35
Total	107,405	89,080	121,344	106,314

Assessors	1,442
NTTC Holder	5,872
Assessment Center	815
TVET Provider	1,054
Registered Program	1,551

Source: Enrolled and Graduates - TESDA-ICTO and Assessed and Certified - TESDA-CO



**ANNEX A -
SECTORAL DATA**

TECHNICAL EDUCATION AND SKILLS DEVELOPMENT AUTHORITY

FOOTWEAR AND LEATHERGOODS

Region	Enrolled	Graduated	Assessed	Certified
VII	36	24		
VIII	71	71		
Total	107	95	0	0

Assessors	0
NTTC Holder	2
Assessment Center	0
TVET Provider	2
Registered Program	4

Source: Enrolled and Graduates - TESDA-ICTO and Assessed and Certified - TESDA-CO



**ANNEX A -
SECTORAL DATA**

TECHNICAL EDUCATION AND SKILLS DEVELOPMENT AUTHORITY

FURNITURE AND FIXTURES

Region	Enrolled	Graduated	Assessed	Certified
CAR	24	24	31	31
IV-A	152	151		
VII	59	34		
X	5			
Total	240	209	31	31

Assessors	2
NTTC Holder	4
Assessment Center	2
TVET Provider	3
Registered Program	3

Source: Enrolled and Graduates - TESDA-ICTO and Assessed and Certified - TESDA-CO





GARMENTS

Region	Enrolled	Graduated	Assessed	Certified
NCR	1,513	995	265	258
CAR	773	756	164	137
I	797	610	319	284
II	2,314	2,255	763	695
III	1,817	1,582	883	877
IV-A	2,078	1,983	654	621
IV-B	150	170	71	60
V	1,485	1,334	948	595
VI	686	637	578	370
VII	3,530	3,426	1,186	1,002
VIII	1,378	796	812	774
IX	1,255	985	597	542
X	783	652	296	226
XI	1,442	1,086	511	466
XII	677	685	593	548
CARAGA	901	893	34	34
BARMM	1,479	1668	1,692	1,480
Overseas			0	0
Portfolio			0	0
RLA			27	27
Total	23,058	20,513	10,393	8,996

Assessors	284
NTTC Holder	1,101
Assessment Center	159
TVET Provider	206
Registered Program	272

Source: Enrolled and Graduates - TESDA-ICTO and Assessed and Certified - TESDA-CO





HEATING, VENTILATION, AIRCONDITIONING, AND REFRIGERATION (HVACR)

Region	Enrolled	Graduated	Assessed	Certified
NCR	2,057	1,812	1,732	1,668
CAR			68	68
I	36	0	82	81
II	111	129	96	81
III	196	189	562	543
IV-A	369	310	759	619
IV-B	84	81	154	149
V	141	153	222	188
VI	76	83	136	132
VII	203	192	238	229
VIII	698	250	245	245
IX	119	82	158	156
X	127	102	140	124
XI	338	359	359	277
XII	42	65	34	22
CARAGA	671	669	55	55
BARMM			0	0
Overseas			0	0
Portfolio			1	1
RLA			18	18
Total	5,268	4,476	5,059	4,656

Assessors	144
NTTC Holder	413
Assessment Center	81
TVET Provider	70
Registered Program	97

Source: Enrolled and Graduates - TESDA-ICTO and Assessed and Certified - TESDA-CO





HUMAN HEALTH / HEALTH CARE

Region	Enrolled	Graduated	Assessed	Certified
NCR	8,413	7,919	12,864	12,222
CAR	4,624	4,108	4,457	3,577
I	10,060	8,059	6,137	5,703
II	3,164	2,631	1,830	1,671
III	12,757	9,347	8,510	8,157
IV-A	6,561	6,005	11,819	11,477
IV-B	1,509	1,244	1,099	1,060
V	2,800	2,148	1,427	1,268
VI	3,336	2,386	3,712	3,400
VII	6,479	4,132	6,876	6,520
VIII	1,788	1,400	1,738	1,680
IX	3,476	3,014	1,454	1,415
X	3,189	2,145	1,616	1,528
XI	12,842	8,697	3,089	3,054
XII	2,089	1,929	2,121	2,047
CARAGA	1,700	1,083	731	713
BARMM	99	70	280	266
Overseas			842	782
Portfolio			9	6
RLA			44	44
Total	84,886	66,317	70,655	66,590

Assessors	896
NTTC Holder	3,619
Assessment Center	554
TVET Provider	844
Registered Program	1,178

Source: Enrolled and Graduates - TESDA-ICTO and Assessed and Certified - TESDA-CO





INFORMATION AND COMMUNICATION TECHNOLOGY (ICT)

Region	Enrolled	Graduated	Assessed	Certified
NCR	13,589	13,222	1,584	1,173
CAR	3,053	2,651	626	325
I	1,123	973	308	142
II	2,511	2,316	12	0
III	4,682	3,184	637	512
IV-A	3,881	2,950	181	117
IV-B	1,462	1,317	0	0
V	2,085	2,029	76	73
VI	3,246	3,835	433	193
VII	5,134	4,754	0	0
VIII	4,401	4,001	147	147
IX	1,077	879	116	92
X	952	761	133	96
XI	1,925	1,412	1,113	822
XII	1,609	1,534	79	77
CARAGA	3,155	2,608	558	297
BARMM	353	351	0	0
Overseas			0	0
Portfolio			0	0
RLA			17	6
Total	54,238	48,777	6,020	4,072

Assessors	114
NTTC Holder	466
Assessment Center	164
TVET Provider	384
Registered Program	496

Source: Enrolled and Graduates - TESDA-ICTO and Assessed and Certified - TESDA-CO



**ANNEX A -
SECTORAL DATA**

TECHNICAL EDUCATION AND SKILLS DEVELOPMENT AUTHORITY

LOGISTICS

Region	Enrolled	Graduated	Assessed	Certified
NCR	20	8	38	38
CAR	17	17	0	0
IV-A	0	0	29	29
VI	5	0	0	0
XII	0	24	0	0
CARAGA	547	541	0	0
Total	589	590	67	67

Assessors	4
NTTC Holder	10
Assessment Center	3
TVET Provider	2
Registered Program	2

Source: Enrolled and Graduates - TESDA-ICTO and Assessed and Certified - TESDA-CO



**ANNEX A -
SECTORAL DATA**

TECHNICAL EDUCATION AND SKILLS DEVELOPMENT AUTHORITY

MARITIME

Region	Enrolled	Graduated	Assessed	Certified
NCR	9,778	5,544	11,023	10,893
I	107	97	50	50
III	378	374	5,092	5,018
IV-A	820	116	239	239
IV-B	864	809	313	313
V	62	62	0	0
VI	1,051	711	1,029	1,028
VII	997	815	1,105	1,100
VIII	315	169	193	193
X	9		0	0
XI	55	45	83	83
XII			20	18
CARAGA			25	25
Total	14,436	8,742	19,172	18,960

Assessors	93
NTTC Holder	280
Assessment Center	62
TVET Provider	68
Registered Program	88

Source: Enrolled and Graduates - TESDA-ICTO and Assessed and Certified - TESDA-CO





METALS AND ENGINEERING

Region	Enrolled	Graduated	Assessed	Certified
NCR	7,110	6,325	9,636	9,556
CAR	1,892	1,758	1,397	1,354
I	4,263	3,842	3,612	3,477
II	2,515	2,439	1,972	1,730
III	12,375	11,542	12,780	12,277
IV-A	8,985	8,525	12,889	12,709
IV-B	2,239	2,239	2,234	2,158
V	2,471	2,046	2,290	2,080
VI	3,294	2,989	4,387	3,544
VII	5,297	5,179	7,717	7,565
VIII	2,700	2,412	3,621	3,549
IX	3,077	2,540	2,373	2,225
X	4,110	3,894	4,210	3,824
XI	4,297	3,358	3,818	3,113
XII	2,993	2,566	3,715	3,573
CARAGA	1,437	1,397	2,236	2,084
BARMM	1,079	1,103	1,161	1,105
Overseas			0	0
Portfolio			0	0
RLA			62	7
Total	70,134	64,154	80,110	75,930

Assessors	1,438
NTTC Holder	4,680
Assessment Center	998
TVET Provider	810
Registered Program	1,716

Source: Enrolled and Graduates - TESDA-ICTO and Assessed and Certified - TESDA-CO



**PROCESSED FOOD AND BEVERAGES**

Region	Enrolled	Graduated	Assessed	Certified
NCR	6,155	6,138	923	904
CAR	2,792	2,896	898	894
I	3,718	3,026	1,171	1,118
II	3,901	3,656	813	699
III	7,579	6,893	828	826
IV-A	3,211	2,601	1,205	1,188
IV-B	4,071	3,988	573	552
V	5,618	5,330	579	556
VI	189	199	73	73
VII	4,043	3,606	241	241
VIII	3,368	3,238	433	430
IX	9,232	8,515	260	257
X	5,257	4,801	359	347
XI	4,184	4,280	467	452
XII	2,155	2,156	226	213
CARAGA	10,680	10,456	94	92
BARMM	40	60	0	0
Overseas			0	0
Portfolio			0	0
RLA			35	19
Total	76,193	71,839	9,178	8,861

Assessors	195
NTTC Holder	663
Assessment Center	85
TVET Provider	129
Registered Program	154

Source: Enrolled and Graduates - TESDA-ICTO and Assessed and Certified - TESDA-CO



**ANNEX A -
SECTORAL DATA**

TECHNICAL EDUCATION AND SKILLS DEVELOPMENT AUTHORITY

PYROTECHNICS

Region	Enrolled	Graduated	Assessed	Certified
IV-A	28			
IV-B	153	153		
VII	112	112		
XI	139	126		
Total	432	391	0	0

Source: Enrolled and Graduates - TESDA-ICTO and Assessed and Certified - TESDA-CO





SOCIAL, COMMUNITY DEVELOPMENT AND OTHER SERVICES (SCDOS)

Region	Enrolled	Graduated	Assessed	Certified
NCR	17,377	16,921	90,492	85,419
CAR	5,428	5,375	1,006	758
I	8,420	6,839	1,686	1,171
II	9,266	8,693	768	568
III	26,677	24,502	4,513	3,605
IV-A	5,264	4,699	21,647	19,096
IV-B	2,766	2,592	358	221
V	13,040	12,441	937	458
VI	1,447	1,063	2,163	1,580
VII	9,544	5,369	1,607	1,067
VIII	14,309	13,450	2,055	1,503
IX	2,156	1,848	613	249
X	2,657	2,403	1,579	1,045
XI	17,634	15,260	4,197	3,022
XII	12,506	8,817	2,317	1,983
CARAGA	8,922	8,040	791	344
BARMM	5	0	59	34
Overseas			4	4
Portfolio			0	0
RLA			0	0
Total	157,418	138,312	136,792	122,127

Assessors	972
NTTC Holder	2,874
Assessment Center	571
TVET Provider	744
Registered Program	922

Source: Enrolled and Graduates - TESDA-ICTO and Assessed and Certified - TESDA-CO





TOURISM (HOTEL AND RESTAURANT)

Region	Enrolled	Graduated	Assessed	Certified
NCR	44,414	40,221	44,701	44,363
CAR	13,032	12,021	10,673	9,203
I	30,768	18,291	22,000	20,759
II	15,489	14,900	13,825	12,974
III	28,967	21,321	37,056	34,625
IV-A	19,594	16,261	37,931	36,775
IV-B	8,905	8,079	8,305	7,897
V	9,434	7,016	10,305	8,415
VI	8,646	7,741	11,322	10,685
VII	21,499	18,665	23,073	22,276
VIII	20,889	13,532	18,199	17,744
IX	15,401	13,167	6,067	5,580
X	15,131	13,754	7,859	7,402
XI	13,785	11,682	15,321	14,528
XII	10,217	8,547	7,765	7,527
CARAGA	9,003	8,669	2,927	2,629
BARMM	2,929	2,673	3,095	3,016
Overseas			0	0
Portfolio			1	1
RLA			77	59
Total	288,103	236,540	280,502	266,458

Assessors	3,534
NTTC Holder	13,465
Assessment Center	2,406
TVET Provider	1,801
Registered Program	4,203

Source: Enrolled and Graduates - TESDA-ICTO and Assessed and Certified - TESDA-CO





TVET (EDUCATION)

Region	Enrolled	Graduated	Assessed	Certified
NCR	3,590	3,090	444	294
CAR	361	327	153	101
I	447	367	172	130
II	733	632	271	242
III	1,025	862	368	275
IV-A	900	742	693	574
IV-B	294	195	112	93
V	896	732	390	259
VI	385	383	260	160
VII	2,828	453	441	300
VIII	490	424	304	256
IX	978	707	340	271
X	1318	746	248	166
XI	795	628	538	299
XII	367	625	453	314
CARAGA	410	352	172	127
BARMM	388	306	402	294
Overseas			0	0
Portfolio			0	0
RLA			0	0
Total	16,205	11,571	5,761	4,155

Assessors	102
NTTC Holder	0
Assessment Center	169
TVET Provider	296
Registered Program	449

Source: Enrolled and Graduates - TESDA-ICTO and Assessed and Certified - TESDA-CO





UTILITIES (WATER SUPPLY, SEWERAGE, WASTE MANAGEMENT, ETC)

Region	Enrolled	Graduated	Assessed	Certified
NCR	144	144	0	0
CAR			516	514
I			20	20
III	399	396	100	96
IV-B	60	60	0	0
V	141	141	60	60
VI			100	100
VII	169	169	0	0
IX	193	193	0	0
X	11		72	70
XI			47	47
CARAGA			140	137
Portfolio			1	1
Total	1,117	1,103	1,056	1,045

Assessors	30
NTTC Holder	33
Assessment Center	13
TVET Provider	4
Registered Program	4

Source: Enrolled and Graduates - TESDA-ICTO and Assessed and Certified - TESDA-CO



**ANNEX A -
SECTORAL DATA**

TECHNICAL EDUCATION AND SKILLS DEVELOPMENT AUTHORITY

VISUAL ARTS

Region	Enrolled	Graduated	Assessed	Certified
NCR	48	25	78	76
CAR			53	25
IV-A	2	4	0	0
IV-B	41	41	0	0
VIII			502	502
IX	61		0	0
X	64	64	0	0
XI	18		0	0
Total	234	134	633	603

Assessors	8
NTTC Holder	44
Assessment Center	6
TVET Provider	5
Registered Program	5

Source: Enrolled and Graduates - TESDA-ICTO and Assessed and Certified - TESDA-CO





WHOLESALE AND RETAIL TRADING

Region	Enrolled	Graduated	Assessed	Certified
NCR	49	52	168	168
CAR	175	88	305	241
I	307	263	0	0
II	25	25	28	28
III	424	320	35	35
IV-A	12	3	49	49
V	26	26	25	25
VI			38	38
VII	39	32	0	0
VIII	225	225	0	0
XI	286	307	142	142
XII		119	0	0
Portfolio			1	1
Total	1,568	1,460	791	727

Assessors	21
NTTC Holder	97
Assessment Center	13
TVET Provider	16
Registered Program	19

Source: Enrolled and Graduates - TESDA-ICTO and Assessed and Certified - TESDA-CO



ANNEX A -
SECTORAL DATA

TECHNICAL EDUCATION AND SKILLS DEVELOPMENT AUTHORITY

OTHERS

Region	Enrolled	Graduated	Assessed	Certified
NCR	47,328	44,212		
CAR	5,100	4,796		
I	7,759	4,575		
II	10,232	9,649		
III	31,139	29,678		
IV-A	9,382	8,216		
IV-B	5,139	4,861		
V	7,484	7,043		
VI	15,019	13,400		
VII	21,431	13,579		
VIII	7,213	7,154		
IX	33,111	31,765		
X	19,442	17,906		
XI	23,068	17,449		
XII	21,745	17,439		
CARAGA	8,988	7,695		
BARMM	1,424	1,339		
Overseas				
Portfolio				
RLA				
Total	275,004	240,756	-	-

Assessors	0
NTTC Holder	0
Assessment Center	0
TVET Provider	380
Registered Program	591

Source: Enrolled and Graduates - TESDA-ICTO and Assessed and Certified - TESDA-CO



List of promulgated Training Regulations (TRs), as of December 2023

Sector	Qualification Title
Agriculture Forestry and Fishery	Agricultural Crops Production NC I
Agriculture Forestry and Fishery	Agricultural Crops Production NC II
Agriculture Forestry and Fishery	Agricultural Crops Production NC III
Agriculture Forestry and Fishery	Agricultural Machinery Operation NC II
Agriculture Forestry and Fishery	Agricultural Machinery Servicing (4-Wheel Tractor) NC III
Agriculture Forestry and Fishery	Agroentrepreneurship NC II
Agriculture Forestry and Fishery	Agroentrepreneurship NC III
Agriculture Forestry and Fishery	Agroentrepreneurship NC IV
Agriculture Forestry and Fishery	Animal Health Care and Management NC III
Agriculture Forestry and Fishery	Animal Production (Poultry-Chicken) NC II
Agriculture Forestry and Fishery	Animal Production (Ruminants) NC II
Agriculture Forestry and Fishery	Animal Production (Swine) NC II
Agriculture Forestry and Fishery	Aquaculture (Grow-out Operation) NC II
Agriculture Forestry and Fishery	Aquaculture (Hatchery Operation) NC II
Agriculture Forestry and Fishery	Aquaculture (Tilapia Culture) NC II
Agriculture Forestry and Fishery	Artificial Insemination (Large Ruminants) NC II
Agriculture Forestry and Fishery	Artificial Insemination (Swine) NC II
Agriculture Forestry and Fishery	Bamboo Processing (Engineered Bamboo) NC II
Agriculture Forestry and Fishery	Bamboo Production NC II
Agriculture Forestry and Fishery	Beekeeping NC II
Agriculture Forestry and Fishery	Biogas Plant Installation NC III
Agriculture Forestry and Fishery	Drying and Milling Plant Servicing NC III
Agriculture Forestry and Fishery	Fish Capture NC I
Agriculture Forestry and Fishery	Fish Capture NC II



ANNEX B - LIST OF
PROMULGATED TRs

TECHNICAL EDUCATION AND SKILLS DEVELOPMENT AUTHORITY

Sector	Qualification Title
Agriculture Forestry and Fishery	Fishing Gear Repair and Maintenance NC III
Agriculture Forestry and Fishery	Fishport/Wharf Operation NC I
Agriculture Forestry and Fishery	Grains Production NC II
Agriculture Forestry and Fishery	Horticulture NC III
Agriculture Forestry and Fishery	Landscape Installation and Maintenance (Softscape) NC II
Agriculture Forestry and Fishery	Milking Operation NC II
Agriculture Forestry and Fishery	Organic Agriculture Production NC II
Agriculture Forestry and Fishery	Pest Management (Vegetables) NC II
Agriculture Forestry and Fishery	Pressurized Irrigation System Installation and Maintenance NC II
Agriculture Forestry and Fishery	Rice Machinery Operations NC II
Agriculture Forestry and Fishery	Rubber Processing NC II
Agriculture Forestry and Fishery	Rubber Production NC II
Agriculture Forestry and Fishery	Seaweed Production NC II
Agriculture Forestry and Fishery	Sugarcane Production NC II
Automotive and Land Transportation	Auto Engine Rebuilding NC II
Automotive and Land Transportation	Automotive Body Painting/Finishing NC I
Automotive and Land Transportation	Automotive Body Painting/Finishing NC III
Automotive and Land Transportation	Automotive Body Repairing NC II
Automotive and Land Transportation	Automotive Electrical Assembly NC II
Automotive and Land Transportation	Automotive Electrical Assembly NC III
Automotive and Land Transportation	Automotive Mechanical Assembly NC II
Automotive and Land Transportation	Automotive Mechanical Assembly NC III
Automotive and Land Transportation	Automotive Painting NC II
Automotive and Land Transportation	Automotive Servicing (Chassis Repair) NC II
Automotive and Land Transportation	Automotive Servicing (Electrical Repair) NC II
Automotive and Land Transportation	Automotive Servicing (Engine Repair) NC II



**ANNEX B - LIST OF
PROMULGATED TRs**

TECHNICAL EDUCATION AND SKILLS DEVELOPMENT AUTHORITY

Sector	Qualification Title
Automotive and Land Transportation	Automotive Servicing NC I
Automotive and Land Transportation	Automotive Servicing NC III
Automotive and Land Transportation	Automotive Servicing NC IV
Automotive and Land Transportation	Automotive Wiring Harness Assembly NC II
Automotive and Land Transportation	Driving (Articulated Vehicle) NC III
Automotive and Land Transportation	Driving (Passenger Bus/Straight Truck) NC III
Automotive and Land Transportation	Driving NC II
Automotive and Land Transportation	Forging NC II
Automotive and Land Transportation	Forging NC III
Automotive and Land Transportation	Foundry Melting/Casting NC II
Automotive and Land Transportation	Foundry Melting/Casting NC III
Automotive and Land Transportation	Foundry Molding NC II
Automotive and Land Transportation	Foundry Molding NC III
Automotive and Land Transportation	Foundry Pattern Making NC II
Automotive and Land Transportation	Foundry Pattern Making NC III
Automotive and Land Transportation	Heat Treatment NC II
Automotive and Land Transportation	Laboratory and Metrology/Calibration Services NC II
Automotive and Land Transportation	Laboratory and Metrology/Calibration Services NC III
Automotive and Land Transportation	Metal Stamping NC II
Automotive and Land Transportation	Moldmaking NC II
Automotive and Land Transportation	Motorcycle/Small Engine Servicing NC II
Automotive and Land Transportation	Painting Machine Operation NC II
Automotive and Land Transportation	Plastic Machine Operation NC II
Automotive and Land Transportation	Plastic Machine Operation NC III
Automotive and Land Transportation	Process Inspection NC II
Automotive and Land Transportation	Process Inspection NC III



**ANNEX B - LIST OF
PROMULGATED TRs**

TECHNICAL EDUCATION AND SKILLS DEVELOPMENT AUTHORITY

Sector	Qualification Title
Automotive and Land Transportation	Speed Limitation Device Servicing NC II
Automotive and Land Transportation	Tinsmithing (Automotive Manufacturing) NC II
Chemicals/ Plastics/ Petrochemicals	Chemical Process Operations NC III
Construction	Carpentry NC II
Construction	Carpentry NC III
Construction	Construction Lift Passenger/Material Elevator Operation NC II
Construction	Construction Painting NC II
Construction	Construction Painting NC III
Construction	Heavy Equipment Operation (Articulated Off-Highway Dump Truck) NC II
Construction	Heavy Equipment Operation (Backhoe Loader) NC II
Construction	Heavy Equipment Operation (Bulldozer) NC II
Construction	Heavy Equipment Operation (Concrete Pump) NC II
Construction	Heavy Equipment Operation (Container Stacker) NC II
Construction	Heavy Equipment Operation (Crawler Crane) NC III
Construction	Heavy Equipment Operation (Forklift) NC II
Construction	Heavy Equipment Operation (Hydraulic Excavator) NC II
Construction	Heavy Equipment Operation (Motor Grader) NC II
Construction	Heavy Equipment Operation (Overhead and Gantry Crane) NC III
Construction	Heavy Equipment Operation (Paver) NC II



**ANNEX B - LIST OF
PROMULGATED TRs**

TECHNICAL EDUCATION AND SKILLS DEVELOPMENT AUTHORITY

Sector	Qualification Title
Construction	Heavy Equipment Operation (Rigid Off-Highway Dump Truck) NC II
Construction	Heavy Equipment Operation (Rigid On-Highway Dump Truck) NC II
Construction	Heavy Equipment Operation (Road Roller) NC II
Construction	Heavy Equipment Operation (Rough Terrain Crane) NC III
Construction	Heavy Equipment Operation (Screed) NC I
Construction	Heavy Equipment Operation (Tower Crane) NC III
Construction	Heavy Equipment Operation (Transit Mixer) NC II
Construction	Heavy Equipment Operation (Truck Mounted Crane) NC III
Construction	Heavy Equipment Operation (Wheel Loader) NC II
Construction	Heavy Equipment Servicing (Mechanical) NC II
Construction	Masonry NC I
Construction	Masonry NC II
Construction	Masonry NC III
Construction	Pipefitting (Metallic) NC II
Construction	Plumbing NC I
Construction	Plumbing NC II
Construction	Plumbing NC III
Construction	PV System Design NC III
Construction	PV Systems Installation NC II
Construction	PV Systems Servicing NC III
Construction	Reinforcing Steel Works NC II



**ANNEX B - LIST OF
PROMULGATED TRs**

TECHNICAL EDUCATION AND SKILLS DEVELOPMENT AUTHORITY

Sector	Qualification Title
Construction	Rigging NC I
Construction	Scaffolding Works NC II (Supported Type Scaffold)
Construction	Structural Erection NC II
Construction	System Formworks Installation NC II
Construction	Technical Drafting NC II
Construction	Tile Setting NC II
Creative Sector	Audio Production Services NC I
Creative Sector	Beadwork Accessories and Diversified Beadwork Products Making NC II
Creative Sector	Film and Video Postproduction NC III
Creative Sector	Handloom Weaving (Backstrap) NC II
Creative Sector	Handloom Weaving (Upright) NC II
Creative Sector	Lighting for Live Performances NC II
Creative Sector	Paper Mache Making NC II
Decorative Crafts	Jewelry Making (Fine Jewelry) NC II
Decorative Crafts	Jewelry Making (Fine Jewelry) NC III
Electrical & Electronics	Biomedical Equipment Servicing NC II
Electrical & Electronics	Computer Systems Servicing NC II
Electrical & Electronics	Consumer Electronics Servicing NC III
Electrical & Electronics	Consumer Electronics Servicing NC IV
Electrical & Electronics	Electrical Installation and Maintenance NC II
Electrical & Electronics	Electrical Installation and Maintenance NC III
Electrical & Electronics	Electrical Installation and Maintenance NC IV
Electrical & Electronics	Electronic Products Assembly and Servicing NC II
Electrical & Electronics	Electronics Back-End Operation NC II
Electrical & Electronics	Electronics Front-of-Line Operation NC II



**ANNEX B - LIST OF
PROMULGATED TRs**

TECHNICAL EDUCATION AND SKILLS DEVELOPMENT AUTHORITY

Sector	Qualification Title
Electrical & Electronics	Electronics/Semiconductor Production Line Machine Servicing NC III
Electrical & Electronics	Hard Disk Drive (HDD) Front-of-line (FOL) Operations NC II
Electrical & Electronics	Instrumentation and Control Servicing NC II
Electrical & Electronics	Instrumentation and Control Servicing NC III
Electrical & Electronics	Instrumentation and Control Servicing NC IV
Electrical & Electronics	Mechatronics Servicing NC II
Electrical & Electronics	Mechatronics Servicing NC III
Electrical & Electronics	Mechatronics Servicing NC IV
Electrical & Electronics	Mobile Phones and Handheld Gadgets Servicing NC III
Electrical & Electronics	Semiconductor Back-End Operation NC II
Electrical & Electronics	Semiconductor Front-of-Line Operation NC II
Footwear & Leathergoods	Shoemaking NC I
Footwear & Leathergoods	Shoemaking NC II
Furniture and Fixtures	Furniture Making (Finishing) NC II
Garments	Dressmaking NC II
Garments	Fashion Design (Apparel) NC III
Garments	Tailoring NC II
Heating, Ventilation, Airconditioning and Refrigeration	Air Duct Servicing NC II
Heating, Ventilation, Airconditioning and Refrigeration	Commercial Air-conditioning Installation and Servicing NC III
Heating, Ventilation, Airconditioning and Refrigeration	Commercial Refrigeration Installation and Servicing NC III
Heating, Ventilation, Airconditioning and Refrigeration	Ice Plant Refrigeration Servicing NC III
Heating, Ventilation, Airconditioning and Refrigeration	Land-Based Transport Mobile Air-conditioning (MAC) NC II



**ANNEX B - LIST OF
PROMULGATED TRs**

TECHNICAL EDUCATION AND SKILLS DEVELOPMENT AUTHORITY

Sector	Qualification Title
Heating, Ventilation, Airconditioning and Refrigeration	Land-based Transport Refrigeration Servicing NC II
Heating, Ventilation, Airconditioning and Refrigeration	RAC Servicing (DomRAC) NC II
Human Health / Health Care	Assistive Rehabilitation Technology Services (Orthotics) NC II
Human Health / Health Care	Assistive Rehabilitation Technology Services (Prosthetics) NC II
Human Health / Health Care	Assistive Rehabilitation Technology Services (Wheelchair) NC II
Human Health / Health Care	Barangay Health Services NC II
Human Health / Health Care	Caregiving (Clients with Special Needs) NC II
Human Health / Health Care	Caregiving (Elderly) NC II
Human Health / Health Care	Caregiving (Grade Schooler to Adolescent) NC II
Human Health / Health Care	Caregiving (Newborn to Pre-Schooler) NC II
Human Health / Health Care	Caregiving NC II
Human Health / Health Care	Community Nutrition Services NC II
Human Health / Health Care	Contact Tracing NC II
Human Health / Health Care	Dental Hygiene Level IV
Human Health / Health Care	Dental Laboratory Technology Services (Fixed Dentures/Restorations) NC II
Human Health / Health Care	Dental Laboratory Technology Services (Removable Dentures/Appliances) NC II
Human Health / Health Care	Dental Laboratory Technology Services NC I
Human Health / Health Care	Dental Technology NC IV
Human Health / Health Care	Emergency Medical Services NC II
Human Health / Health Care	Emergency Medical Services NC III
Human Health / Health Care	Health Care Services NC II
Human Health / Health Care	Hilot (Wellness Massage) NC II



**ANNEX B - LIST OF
PROMULGATED TRs**

TECHNICAL EDUCATION AND SKILLS DEVELOPMENT AUTHORITY

Sector	Qualification Title
Human Health / Health Care	Massage Therapy NC II
Human Health / Health Care	Ophthalmic Lens Services NC II
Human Health / Health Care	Pharmacy Services NC III
Information and Communication Technology	2D Animation NC III
Information and Communication Technology	2D Game Art Development NC III
Information and Communication Technology	3D Animation NC III
Information and Communication Technology	3D Game Art Development NC III
Information and Communication Technology	Animation NC II
Information and Communication Technology	Broadband Installation (Fixed Wireless Systems) NC II
Information and Communication Technology	Cable TV Installation NC II
Information and Communication Technology	Cable TV Operation and Maintenance NC III
Information and Communication Technology	Contact Center Services NC II
Information and Communication Technology	Game Programming NC III
Information and Communication Technology	Medical Coding and Claims Processing NC III
Information and Communication Technology	Medical Transcription NC II
Information and Communication Technology	Programming (.Net Technology) NC III
Information and Communication Technology	Programming (Java) NC III



**ANNEX B - LIST OF
PROMULGATED TRs**

TECHNICAL EDUCATION AND SKILLS DEVELOPMENT AUTHORITY

Sector	Qualification Title
Information and Communication Technology	Programming (Oracle Database) NC III
Information and Communication Technology	Telecom OSP and Subscriber Line Installation (Copper Cable/POTS and DSL) NC II
Information and Communication Technology	Telecom OSP Installation (Fiber Optic Cable) NC II
Information and Communication Technology	Visual Graphic Design NC III
Information and Communication Technology	Web Development NC III
Logistics	Multimodal Transport Operations and Logistics (Seafreight Import) Services NC II
Logistics	Multimodal Transport Operations and Logistics (Seafreight Import) Services NC III
Logistics	Multimodal Transport Operations and Logistics (Seafreight Import) Services NC IV
Logistics	Warehousing Services NC II
Logistics	Warehousing Services NC III
Logistics	Warehousing Services NC IV
Maritime	Marine Electricity NC II
Maritime	Ship's Catering Services NC I
Maritime	Ships' Catering NC III (Ships' Cooks)
Metals and Engineering	5-Axis CNC Machine Operation NC III
Metals and Engineering	CAD/CAM Operation NC III
Metals and Engineering	CNC Electric Discharge Machine (EDM) Wire Cut Operation NC III
Metals and Engineering	CNC Lathe Machine Operation NC II
Metals and Engineering	CNC Lathe Machine Operation NC III
Metals and Engineering	CNC Milling Machine Operation NC II
Metals and Engineering	CNC Milling Machine Operation NC III



ANNEX B - LIST OF
PROMULGATED TRs

TECHNICAL EDUCATION AND SKILLS DEVELOPMENT AUTHORITY

Sector	Qualification Title
Metals and Engineering	Die Designing NC IV
Metals and Engineering	Electric Discharge Machine (EDM) Sinking Operation NC II
Metals and Engineering	Flux-Cored Arc Welding (FCAW) NC I
Metals and Engineering	Flux-Cored Arc Welding (FCAW) NC II
Metals and Engineering	Flux-Cored Arc Welding (FCAW) NC III
Metals and Engineering	Gas Metal Arc Welding (GMAW) NC I
Metals and Engineering	Gas Metal Arc Welding (GMAW) NC II
Metals and Engineering	Gas Metal Arc Welding (GMAW) NC III
Metals and Engineering	Gas Tungsten Arc Welding (GTAW) NC II
Metals and Engineering	Gas Tungsten Arc Welding (GTAW) NC IV
Metals and Engineering	Gas Welding NC I
Metals and Engineering	Gas Welding NC II
Metals and Engineering	Machining NC I
Metals and Engineering	Machining NC II
Metals and Engineering	Machining NC III
Metals and Engineering	Manual Metal Arc Welding (MMAW) NC I
Metals and Engineering	Manual Metal Arc Welding (MMAW) NC II
Metals and Engineering	Manual Metal Arc Welding (MMAW) NC III
Metals and Engineering	Manual Metal Arc Welding (MMAW) NC IV
Metals and Engineering	Mechanical Drafting NC I
Metals and Engineering	Mold Designing NC IV
Metals and Engineering	Mold Making NC III
Metals and Engineering	Plant Maintenance NC I
Metals and Engineering	Press Machine Operation NC I
Metals and Engineering	Submerged Arc Welding (SAW) NC I
Metals and Engineering	Submerged Arc Welding (SAW) NC II
Metals and Engineering	Tool and Die Making NC II



**ANNEX B - LIST OF
PROMULGATED TRs**

TECHNICAL EDUCATION AND SKILLS DEVELOPMENT AUTHORITY

Sector	Qualification Title
Processed Food & Beverages	Fish Products Packaging NC II
Processed Food & Beverages	Food Processing NC I
Processed Food & Beverages	Food Processing NC II
Processed Food & Beverages	Food Processing NC III
Processed Food & Beverages	Food Processing NC IV
Processed Food & Beverages	Slaughtering Operations (Large Animal) NC II
Processed Food & Beverages	Slaughtering Operations (Swine) NC II
Pyrotechnics	Pyrotechnics NC II
Social, Community Development and Other Services	Barbering NC II
Social, Community Development and Other Services	Beauty Care (Nail Care) Services NC II
Social, Community Development and Other Services	Beauty Care (Nail Enhancement Technology) Services NC III
Social, Community Development and Other Services	Beauty Care (Skin Care) Services NC II
Social, Community Development and Other Services	Bookkeeping NC III
Social, Community Development and Other Services	Data Collection NC II
Social, Community Development and Other Services	Domestic Work NC II
Social, Community Development and Other Services	Hairdressing NC II
Social, Community Development and Other Services	Hairdressing NC III
Social, Community Development and Other Services	Lifeguard Services NC II
Social, Community Development and Other Services	Lifeguard Services NC III



**ANNEX B - LIST OF
PROMULGATED TRs**

TECHNICAL EDUCATION AND SKILLS DEVELOPMENT AUTHORITY

Sector	Qualification Title
Social, Community Development and Other Services	Microfinance Technology NC II
Social, Community Development and Other Services	Microfinance Technology NC IV
Social, Community Development and Other Services	Microinsurance Services (Mutual Benefit) NC II
Social, Community Development and Other Services	Performing Arts (Ballroom Dancing) NC II
Social, Community Development and Other Services	Performing Arts (Dance) NC II
Social, Community Development and Other Services	Performing Arts (Magician) NC II
Social, Community Development and Other Services	Performing Arts (Song) NC II
Social, Community Development and Other Services	Printing Services (Prepress Technical Operations) NC I
Social, Community Development and Other Services	Printing Services (Prepress Technical Operations) NC II
Social, Community Development and Other Services	Public Employment Services NC IV
Social, Community Development and Other Services	Real Estate Services NC II
Social, Community Development and Other Services	Security Services NC I
Social, Community Development and Other Services	Security Services NC II
Tourism (Hotel and Restaurant)	Attractions and Theme Parks Operations NC II
Tourism (Hotel and Restaurant)	Barista NC II
Tourism (Hotel and Restaurant)	Bartending NC II
Tourism (Hotel and Restaurant)	Cookery NC II
Tourism (Hotel and Restaurant)	Events Management Services NC III



**ANNEX B - LIST OF
PROMULGATED TRs**

TECHNICAL EDUCATION AND SKILLS DEVELOPMENT AUTHORITY

Sector	Qualification Title
Tourism (Hotel and Restaurant)	Food and Beverage Services NC II
Tourism (Hotel and Restaurant)	Food and Beverage Services NC III
Tourism (Hotel and Restaurant)	Food and Beverage Services NC IV
Tourism (Hotel and Restaurant)	Food Production (Bread and Patisserie) NC II
Tourism (Hotel and Restaurant)	Food Production (Professional Cookery) NC III
Tourism (Hotel and Restaurant)	Food Production (Professional Cookery) NC IV
Tourism (Hotel and Restaurant)	Front Office Services NC II
Tourism (Hotel and Restaurant)	Front Office Services NC III
Tourism (Hotel and Restaurant)	Front Office Services NC IV
Tourism (Hotel and Restaurant)	Housekeeping NC II
Tourism (Hotel and Restaurant)	Housekeeping NC III
Tourism (Hotel and Restaurant)	Housekeeping NC IV
Tourism (Hotel and Restaurant)	Local Guiding Services NC II
Tourism (Hotel and Restaurant)	Tour Guiding Services NC III
Tourism (Hotel and Restaurant)	Tour Packaging (FIT AD HOC DOMESTIC) Services NC II
Tourism (Hotel and Restaurant)	Tourism Promotion Services NC II
Tourism (Hotel and Restaurant)	Travel Services NC II
TVET	Trainers Methodology Level I (In-Company Trainer)
TVET	Trainers Methodology Level I (Trainer/Assessor)
TVET	Trainers Methodology Level II (Training Designer/Developer)
Utilities	Diesel Power Plant Maintenance NC III
Utilities	Diesel Power Plant Operation and Maintenance NC II
Utilities	Diesel Power Plant Operation and Maintenance NC III



**ANNEX B - LIST OF
PROMULGATED TRs**

TECHNICAL EDUCATION AND SKILLS DEVELOPMENT AUTHORITY

Sector	Qualification Title
Utilities	Electric Power Distribution Line Construction NC II
Utilities	Electric Power Distribution Operation and Maintenance NC III
Utilities	Electric Power Distribution Operation and Maintenance NC IV
Utilities	Garbage Collection NC I
Utilities	Sanitary Landfill Operations NC II
Utilities	Sanitary Landfill Operations NC III
Utilities	Transmission Line Installation and Maintenance NC II
Utilities	Transmission Line Installation and Maintenance NC III
Utilities	Transmission Line Installation and Maintenance NC IV
Visual Arts	Illustration NC II
Visual Arts	Photography NC II
Wholesale and Retail Trading	Customer Services NC II

Source: TESDA - Qualifications Standards Office (QSO)





Technical Education and Skills Development Authority

**Office of the Deputy Director
General for Policies and Planning**

**Planning Office - Labor Market
Information Division**

**Planning Office - Policy Research and
Evaluation Division**

**TESDA Complex, East Service Road,
South Superhighway, Taguig City, 1630**

www.tesda.gov.ph | 8887-7777



135

